



Kabelschonung
Kabelschonung
Kabelschonung

Hersteller: OBO

System:

Material:

Farbe:

Abmessungen:



Kabelschonung
Kabelschonung
Kabelschonung

Hersteller: OBO

System:

Material:

Farbe:




Abmessungen:



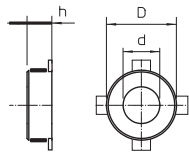
PYROCOMB® pipe sleeve

05 BSS Masterkatalog Länder / en / 25/07/2016 (LLExpert_04356) / 25/07/2016

PYROCOMB® pipe sleeve

	Pipe sleeve	228
	Insulation layer creator	229
	Identification plate	231

Pipe sleeve with 2 fastening straps



Type	Pipe Ø mm	Dim. h mm	Dimen- sion D mm	Dim. d mm	Pack. pcs	Weight kg/100 pcs.	Item No.
TCX-032	32	26	50	36	1	6,500	7202 20 0
TCX-040	40	26	58	44	1	7,000	7202 20 1
TCX-050	50	26	68	54	1	8,000	7202 20 3

Intumescent material

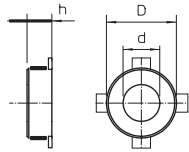
/pc.

Pipe sleeve for combustible pipes.

If there is a fire, fire protection inserts inside the sheet steel housing expand, exerting a very great pressure onto the burning thermoplastic pipes.

Fastening with anchors or M6 threaded rods.

Pipe sleeve with 4 fastening straps



Type	Pipe Ø mm	Dim. h mm	Dimen- sion D mm	Dim. d mm	Pack. pcs	Weight kg/100 pcs.	Item No.
TCX-063	63	26	94	67	1	15,500	7202 20 4
TCX-075	75	26	106	79	1	19,000	7202 20 5
TCX-090	90	26.6	132	94	1	37,000	7202 20 6
TCX-110	110	26.6	155	114	1	46,000	7202 20 7
TCX-125	125	40	172	129	1	70,000	7202 20 8

Intumescent material

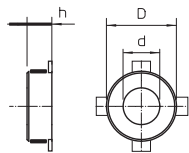
/pc.

Pipe sleeve for combustible pipes.

If there is a fire, fire protection inserts inside the sheet steel housing expand, exerting a very great pressure onto the burning thermoplastic pipes.

Fastening with anchors of M6 threaded rods up to size 75, then M8.

Pipe sleeve with 6 fastening straps



Type	Pipe Ø mm	Dim. h mm	Dimen- sion D mm	Dim. d mm	Pack. pcs	Weight kg/100 pcs.	Item No.
TCX-140	140	40	200	144	1	106,000	7202 20 9
TCX-160	160	40	220	164	1	107,000	7202 21 0

Intumescent material

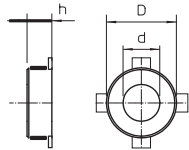
/pc.

Pipe sleeve for combustible pipes.

If there is a fire, fire protection inserts inside the sheet steel housing expand, exerting a very great pressure onto the burning thermoplastic pipes.

Fastening with anchors or M8 threaded rods.

Pipe sleeve with 8 fastening straps



Type	Pipe Ø mm	Dim. h mm	Dimen- sion D mm	Dim. d mm	Pack. pcs	Weight kg/100 pcs.	Item No.
TCX-180	180	40	264	184	1	175,000	7202 21 2
TCX-200	200	40	284	204	1	242,000	7202 21 4

Intumescent material

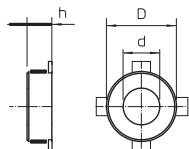
/pc.

Pipe sleeve for combustible pipes.

If there is a fire, fire protection inserts inside the sheet steel housing expand, exerting a very great pressure onto the burning thermoplastic pipes.

Fastening with anchors or M8 threaded rods.

Pipe sleeve with 10 fastening straps



Type	Pipe Ø mm	Dim. h mm	Dimen- sion D mm	Dim. d mm	Pack. pcs	Weight kg/100 pcs.	Item No.
TCX-225	225	51.5	328	239	1	306,000	7202 21 3
TCX-250	250	51.5	353	264	1	346,000	7202 21 5

Intumescent material

/pc.

FS Strip-galvanised

Pipe sleeve for combustible pipes.

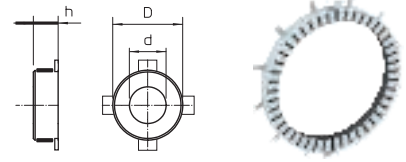
If there is a fire, fire protection inserts inside the sheet steel housing expand, exerting a very great pressure onto the burning thermoplastic pipes.

Fastening with anchors or M8 threaded rods.



Pipe sleeve with 12 fastening straps

Type	Pipe Dim.		Dimen- sion D	Dim. d	Pack. pcs	Weight kg/100 pcs.	Item No.
	Ø	h					
	mm	mm	mm	mm			
TCX-280	280	51.5	378	289	1	398,000	7202 21 6
TCX-300	300	51.5	403	314	1	405,000	7202 21 7
TCX-315	315	51.5	417	328	1	425,000	7202 21 8
TCX-355	355	51.5	459	370	1	460,000	7202 21 9
TCX-400	400	51.5	504	415	1	520,000	7202 22 0



Intumescent material

/pc.

FS Strip-galvanised

Pipe sleeve for combustible pipes.

If there is a fire, fire protection inserts inside the sheet steel housing expand, exerting a very great pressure onto the burning thermoplastic pipes.

Fastening with anchors or M8 threaded rods.

Insulation layer creator in a cartridge

Type	Contents ml	Pack. pcs	Weight kg/100 pcs.	Item No.

Intumescent material

/pc.

Dispersion-based fire protection compound for interior areas, to fill residual joints and close openings. Approved material for closing core drill holes for individual cable glands.

Material class DIN 4102 - B2, normally flammable.

In dry, frost-free rooms, the compound can be stored at temperatures from +5 °C to +25 °C for up to 18 months in closed, upright original containers.



Mineral wool

Type	Dimension	Pack. pcs	Weight kg/100 pcs.	Item No.

Mineral fibres

/pc.

Universal filling wool for various fire protection applications, packed in compressed form.

Material class EN 13 501 - A1, non-combustible; melting point ≥ 1000 °C.



Threaded rod

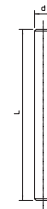
Type	Thread	Dim. d	Dim. L	Pack. pcs	Weight kg/100 pcs.	Item No.
2078 M8 1M G	M8	8	1000	10	30,000	3141 12 8

St Steel

/100 pc.

G Electrogalvanised

Threaded rod to DIN 976.



Hexagonal nut

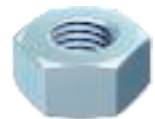
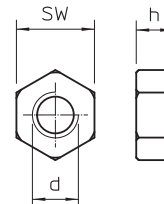
Type	Thread	Dim. SW	Dim. h	Dim. d	Pack. pcs	Weight kg/100 pcs.	Item No.
DIN 934 M8 G	M8	13	6.8	8	100	0,474	3400 08 5

St Steel

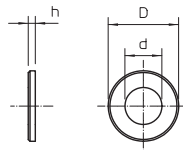
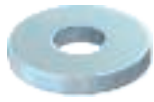
/100 pc.

G Electrogalvanised

Hexagonal nut to DIN 934 with metric thread.



Washer



Type	Thread	Dim. d mm	Dimen- sion D mm	Dim. h mm	Pack. pcs	Weight kg/100 pcs.	Item No.
967 M6 G	M6	6.5	28	2.5	100	1,150	3402 20 7
967 M8 G	M8	8.5	28	2.5	100	1,100	3402 21 5

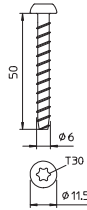
St Steel

G Electrogalvanised

/100 pc.

Washer of large outer diameter for universal use.

Bolt tie



Type	Dimension mm	Anchor length mm	Bore hole Ø mm	Head Ø mm	Screw system	Pack. pcs	Weight kg/100 pcs.	Item No.
MMS6X50	6 x 50	50	5	11.5	Torx	100	0,960	3498 10 7

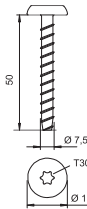
St Steel

G Electrogalvanised

/100 pc.

Fire protection bolt tie with pan head for direct mounting without additional anchors. Drive T30, drill hole 5 mm. Fire protection tested according to DIN 4102 for concrete and masonry.

Bolt tie



Type	Dimension mm	Anchor length mm	Bore hole Ø mm	Head Ø mm	Screw system	Pack. pcs	Weight kg/100 pcs.	Item No.
MMS-MS7,5x50	7.5 x 50	50	6	17	Torx	100	1,522	3498 26 0

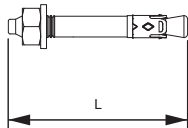
St Steel

G Electrogalvanised

/100 pc.

Fire protection bolt tie with large pan head for direct mounting without additional anchors. Drive T30, drill hole 6 mm. Fire protection tested according to DIN 4102 for concrete and masonry.

Metal spreading anchor



Type	Thread	Bore hole Ø mm	Bore depth mm	Clamping range mm	Dim. L mm	Pack. pcs	Weight kg/100 pcs.	Item No.
N 6-5-10/49	M6	6	40	5 - 10	49	100	1,160	3498 39 6

St Steel

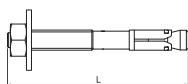
G Electrogalvanised

/100 pc.

The nail anchor N can be used for multiple fastenings of non-load-bearing systems and in cracked and non-cracked concrete, thereby combining the benefits of a bolt tie with an even easier mounting.

The nail anchor only needs to be hammered into the drill hole. It is not necessary to apply torque subsequently. When the load occurs, the nail anchor spreads itself and bolts itself in the drill hole.

Metal spreading anchor



Type	Thread	Dim. L mm	Pack. pcs	Weight kg/100 pcs.	Item No.
BZ-U 8-10-21/75	M8	75	50	3,460	3498 32 0

St Steel

G Electrogalvanised

/100 pc.

Wedge anchor BZ for the anchoring of medium-duty to heavy-duty loads, both in cracked and non-cracked concrete. It combines high approved loads with small edge distances and axial spacings.

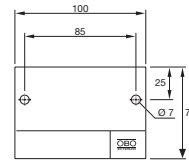


Identification plate

Type	Language	Pack. pcs	Weight kg/100 pcs.	Item No.
KS-S DE	German	1	2,400	7205 42 5
KS-S SE	Swedish	1	2,400	7205 42 6
KS-S ES	Spanish	1	2,400	7205 42 7
KS-S EN	English	1	2,400	7205 42 9
KS-S HR	Croatian	1	2,400	7205 43 8

PVC Polyvinylchloride

/pc.



Universal identification plate to be written on with waterproof and light-resistant felt-tip pen for all types of OBO insulation. For approved identification, including two push-fit anchors.

