




Cable gland systems,
brass



01_VBS_Masterkatalog_Länder / en / 21/07/2016 (LLExpert_04376) / 21/07/2016

Cable gland systems, brass

| | | |
|---|---------------------------------------|-----|
|  | Cap nut cable gland | 197 |
|  | Cone cable gland | 200 |
|  | Locknuts | 205 |
|  | Cable gland system accessories | 206 |

Cable gland systems, brass

- + Robust
- + With long and short connection
- + Excellent protection
- + VDE-tested



V-TEC VM MS

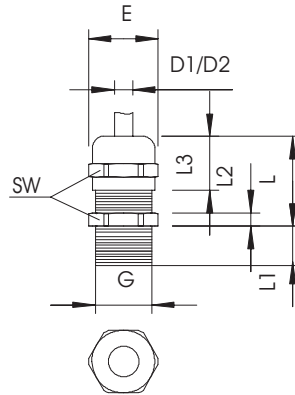
Tough conditions are no problem for the brass V-TEC VM. Here too, the known V-TEC cap nut design of the cable glands ensures a secure hold of the cables. The protection class IP68 is achieved using separate sealing rings and their special OBO slat technology.

Strain relief and tightness have been tested to DIN EN 50262. The connecting threads are metric or PG and are therefore suitable for universal use. Once screwed in place, the installation will stay secure for a long time to come. The optimum thread adjustment with

the right pitch ensures permanent resistance to shaking.

Applications: from private housing with junction boxes up to industrial applications in the distributor cabinet.

Cap nut cable gland



- Sturdy cable gland to withstand mechanical loads
- The proven V-TEC cap nut design ensures a secure hold of the cables
- The protection class IP68 is achieved using separate sealing rings and their special OBO slat technology
- With metric connecting thread to IEC 423
- Neoprene/NBR sealing ring, polyamide terminal insert
- With pre-mounted sealing ring on the connection thread
- Optimum thread adjustment with the right pitch ensures lasting resistance to shaking
- Applications: from private housing with junction boxes up to industrial applications in the distributor cabinet
- Temperature range: -20 °C to +100 °C
- * Prices according to DEL notation

| G | D1 | SW | E | L max. |
|-----------|-------|----|------|--------|
| | mm | mm | mm | mm |
| M12 x 1.5 | 3-6 | 14 | 15.5 | 20 |
| M16 x 1.5 | 5-9 | 17 | 19 | 24 |
| M20 x 1.5 | 9-13 | 22 | 24 | 27 |
| M25 x 1.5 | 11-16 | 27 | 30 | 29.5 |
| M32 x 1.5 | 14-21 | 34 | 36 | 30 |
| M40 x 1.5 | 19-27 | 43 | 46 | 33 |
| M50 x 1.5 | 24-35 | 55 | 60 | 38.5 |
| M63 x 1.5 | 32-42 | 65 | 70 | 44.5 |

Cable gland, metric thread



| Type | Thread | Dim. L1 mm | Pack. pcs | Weight kg/100 pcs. | Item No. |
|---------------|-----------|------------|-----------|--------------------|-----------|
| V-TEC VM12 MS | M12 x 1,5 | 5 | 50 | 1,200 | 2086 01 8 |
| V-TEC VM16 MS | M16 x 1,5 | 5 | 50 | 1,640 | 2086 02 4 |
| V-TEC VM20 MS | M20 x 1,5 | 6 | 25 | 3,140 | 2086 03 0 |
| V-TEC VM25 MS | M25 x 1,5 | 7 | 25 | 4,260 | 2086 03 6 |
| V-TEC VM32 MS | M32 x 1,5 | 8 | 20 | 7,160 | 2086 04 2 |
| V-TEC VM40 MS | M40 x 1,5 | 8 | 5 | 12,240 | 2086 04 8 |
| V-TEC VM50 MS | M50 x 1,5 | 9 | 5 | 22,700 | 2086 05 4 |
| V-TEC VM63 MS | M63 x 1,5 | 10 | 5 | 30,300 | 2086 06 0 |

CuZn Brass

/100 pcs.

N Nickel-plated

Cable gland, long metric thread



| Type | Thread | Dim. L1 mm | Pack. pcs | Weight kg/100 pcs. | Item No. |
|------------------|-----------|------------|-----------|--------------------|-----------|
| V-TEC VM LM12 MS | M12 x 1,5 | 10 | 50 | 1,300 | 2086 11 1 |
| V-TEC VM LM16 MS | M16 x 1,5 | 10 | 50 | 1,940 | 2086 11 7 |
| V-TEC VM LM20 MS | M20 x 1,5 | 10 | 25 | 3,360 | 2086 12 3 |
| V-TEC VM LM25 MS | M25 x 1,5 | 11 | 25 | 4,800 | 2086 12 9 |
| V-TEC VM LM32 MS | M32 x 1,5 | 13 | 10 | 7,840 | 2086 13 5 |
| V-TEC VM LM40 MS | M40 x 1,5 | 13 | 5 | 13,400 | 2086 14 1 |
| V-TEC VM LM50 MS | M50 x 1,5 | 14 | 5 | 24,000 | 2086 14 7 |
| V-TEC VM LM63 MS | M63 x 1,5 | 14 | 5 | 32,100 | 2086 15 3 |
| V-TEC VM LM75MS1 | M75 x 1,5 | 18 | 3 | 112,300 | 2086 15 6 |
| V-TEC VM LM75MS2 | M75 x 1,5 | 18 | 3 | 98,200 | 2086 15 9 |

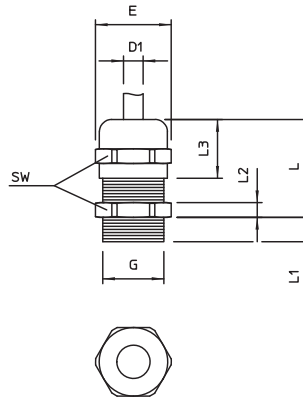
CuZn Brass

/100 pcs.

N Nickel-plated



Cable gland, PG thread



- Even tough conditions are no problem
- With PG connection thread
- Once screwed in place, the installation will stay secure for a long time to come
- Temperature range: -20 °C to +100 °C
- * Prices according to DEL notation

| G | D1 | D2 | SW | E | L max. | L2 | L3 |
|---------|---------|--------|----|------|--------|-----|------|
| | mm | mm | mm | mm | mm | mm | mm |
| Pg 7 | 2.5-6.5 | 3-6.5 | 14 | 15.5 | 20 | 3 | 12 |
| Pg 9 | 2.5-8 | 3.5-8 | 17 | 18.9 | 22 | 3 | 14 |
| PG 11 | 3.5-10 | 4.5-10 | 20 | 22.2 | 24 | 3 | 15 |
| Pg 13.5 | 5-12 | 6-12 | 22 | 24.4 | 25 | 3.5 | 15 |
| Pg 16 | 7-14 | 7-14 | 24 | 26.7 | 27 | 4 | 17 |
| Pg 21 | 9-18 | 12-18 | 30 | 33.5 | 33 | 4.5 | 20 |
| Pg 29 | 14-25 | 17-25 | 40 | 43.5 | 39 | 5 | 23.5 |
| Pg 36 | 18-32 | 20-32 | 50 | 54 | 49 | 5.5 | 29 |
| Pg 42 | 24-38 | 26-38 | 57 | 61 | 52 | 6 | 31 |
| Pg 48 | 30-44 | 30-44 | 64 | 69 | 52.5 | 6.5 | 31 |

Cable gland, PG thread



| Type | Thread | Dim. L1 mm | Pack. pcs | Weight kg/100 pcs. | Item No. |
|---------------|---------|------------|-----------|--------------------|-----------|
| V-TEC PG7 MS | Pg 7 | 5 | 50 | 1,000 | 2085 60 7 |
| V-TEC PG9 MS | Pg 9 | 6 | 50 | 1,600 | 2085 61 5 |
| V-TEC PG11 MS | Pg 11 | 6 | 50 | 2,300 | 2085 62 3 |
| V-TEC PG13 MS | Pg 13,5 | 6.5 | 50 | 2,800 | 2085 63 1 |
| V-TEC PG16 MS | Pg 16 | 6.5 | 25 | 3,400 | 2085 65 8 |
| V-TEC PG21 MS | Pg 21 | 7 | 25 | 6,000 | 2085 66 6 |
| V-TEC PG29 MS | Pg 29 | 8 | 20 | 13,000 | 2085 67 4 |
| V-TEC PG36 MS | Pg 36 | 9 | 10 | 21,000 | 2085 68 2 |
| V-TEC PG42 MS | Pg 42 | 10 | 5 | 23,500 | 2085 69 0 |
| V-TEC PG48 MS | Pg 48 | 10 | 5 | 31,500 | 2085 70 4 |

CuZn Brass
N Nickel-plated

/100 pc.

Cable gland, long PG thread



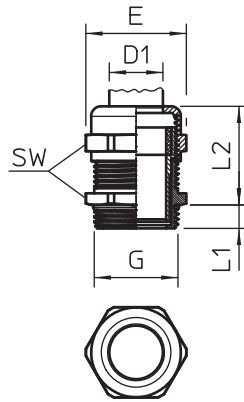
| Type | Thread | Dim. L1 mm | Pack. pcs | Weight kg/100 pcs. | Item No. |
|-----------------|---------|------------|-----------|--------------------|-----------|
| V-TEC L PG9 MS | Pg 9 | 10 | 50 | 1,740 | 2085 73 9 |
| V-TEC L PG11 MS | Pg 11 | 10 | 50 | 2,550 | 2085 74 7 |
| V-TEC L PG13 MS | Pg 13,5 | 10 | 50 | 3,030 | 2085 75 5 |
| V-TEC L PG16 MS | Pg 16 | 10 | 25 | 3,660 | 2085 76 3 |
| V-TEC L PG21 MS | Pg 21 | 12 | 25 | 6,580 | 2085 77 1 |
| V-TEC L PG29 MS | Pg 29 | 12 | 10 | 13,660 | 2085 79 8 |
| V-TEC L PG48 MS | Pg 48 | 15 | 5 | 37,900 | 2085 83 6 |

CuZn Brass
N Nickel-plated

/100 pc.



Cable gland, EMC



- Robust EMC cap-nut cable gland
- With metric connecting thread to IEC 423
- Satisfies high tightness requirements: protection rating IP68 at 5 bar/1 hr
- Neoprene/natural rubber sealing ring, polyamide terminal insert
- With pre-mounted O sealing ring on the connection thread
- * Prices according to DEL notation

| G | D1 | SW | E | L max. | L1 |
|-----------|-------|----|------|--------|----|
| | mm | mm | mm | mm | mm |
| M12 x 1.5 | 3-6 | 14 | 15.5 | 25 | 5 |
| M16 x 1.5 | 5-9 | 17 | 19 | 30 | 5 |
| M20 x 1.5 | 9-13 | 22 | 24 | 33.5 | 6 |
| M25 x 1.5 | 11-16 | 27 | 30 | 36.5 | 7 |
| M32 x 1.5 | 14-21 | 34 | 36 | 38 | 8 |
| M40 x 1.5 | 19-27 | 43 | 46 | 49.5 | 8 |
| M50 x 1.5 | 24-35 | 55 | 60 | 49.5 | 9 |
| M63 x 1.5 | 32-42 | 65 | 70 | 52.5 | 10 |

Cable gland, EMC, metric

| Type | Thread | Pack. pcs | Weight kg/100 pcs. | Item No. |
|----------------|-----------|-----------|--------------------|-----------|
| V-TEC VM12 EMV | M12 x 1,5 | 50 | 1,362 | 2086 20 3 |
| V-TEC VM16 EMV | M16 x 1,5 | 50 | 1,849 | 2086 20 7 |
| V-TEC VM20 EMV | M20 x 1,5 | 25 | 3,473 | 2086 21 1 |
| V-TEC VM25 EMV | M25 x 1,5 | 25 | 5,280 | 2086 21 5 |
| V-TEC VM32 EMV | M32 x 1,5 | 20 | 7,470 | 2086 21 9 |
| V-TEC VM40 EMV | M40 x 1,5 | 5 | 12,880 | 2086 22 3 |
| V-TEC VM50 EMV | M50 x 1,5 | 5 | 26,165 | 2086 22 7 |
| V-TEC VM63 EMV | M63 x 1,5 | 5 | 33,990 | 2086 23 1 |

CuZn Brass

/100 pcs.

N Nickel-plated



Cable gland, EMC spring contact, metric

| Type | Thread | Pack. pcs | Weight kg/100 pcs. | Item No. |
|------------------|---------|-----------|--------------------|-----------|
| V-TEC VM16 EMV-K | M16x1,5 | 50 | 2,044 | 2086 16 5 |
| V-TEC VM20 EMV-K | M20x1,5 | 25 | 3,564 | 2086 16 9 |
| V-TEC VM25 EMV-K | M25x1,5 | 25 | 5,918 | 2086 17 3 |
| V-TEC VM32 EMV-K | M32x1,5 | 20 | 9,880 | 2086 17 7 |
| V-TEC VM40 EMV-K | M40x1,5 | 5 | 17,200 | 2086 18 1 |
| V-TEC VM50 EMV-K | M50x1,5 | 5 | 13,735 | 2086 18 5 |
| V-TEC VM63 EMV-K | M63x1,5 | 5 | 16,780 | 2086 18 9 |

CuZn Brass

/100 pcs.

N Nickel-plated



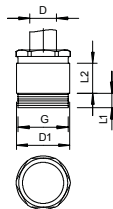
Cone cable gland

IP 54 IP 65



- Robust EMC cap-nut cable gland
- With metric connecting thread to IEC 423 for meeting high tightness requirements

Cable gland, metric thread



IP 54 IP 65 M

| Type | Thread | Pack. pcs | Weight kg/100 pcs. | Item No. |
|------------|-----------|-----------|--------------------|-----------|
| 160 MS M12 | M12 x 1,5 | 50 | 1,060 | 2079 80 1 |
| 160 MS M16 | M16 x 1,5 | 50 | 1,810 | 2079 82 8 |
| 160 MS M20 | M20 x 1,5 | 50 | 2,530 | 2079 83 6 |
| 160 MS M25 | M25 x 1,5 | 25 | 3,390 | 2079 84 4 |
| 160 MS M32 | M32 x 1,5 | 25 | 5,000 | 2079 85 2 |
| 160 MS M40 | M40 x 1,5 | 10 | 8,720 | 2079 86 0 |
| 160 MS M50 | M50 x 1,5 | 10 | 15,800 | 2079 87 9 |
| 160 MS M63 | M63 x 1,5 | 5 | 21,600 | 2079 88 7 |

CuZn Brass

/100 pcs.

N Nickel-plated

Dimensions

| G | D mm | D1 mm | SW mm | E mm | L1 mm | L2 mm |
|-----------|-------|-------|-------|------|-------|-------|
| M12 x 1.5 | 5-7 | 14 | 13 | 14.3 | 7 | 10 |
| M16 x 1.5 | 6-8 | 17 | 15 | 16.6 | 7 | 10.5 |
| M20 x 1.5 | 8-10 | 22 | 20 | 22.2 | 7 | 12.5 |
| M25 x 1.5 | 8-10 | 26 | 22 | 24.2 | 7 | 12.5 |
| M32 x 1.5 | 17-19 | 34 | 28 | 31.2 | 8.5 | 15 |
| M40 x 1.5 | 24-26 | 41 | 37 | 41 | 8.5 | 16.5 |
| M50 x 1.5 | 31-33 | 54 | 47 | 50.5 | 9.5 | 19.5 |
| M63 x 1.5 | 37-39 | 64 | 54 | 59 | 10.5 | 16.5 |

Cable gland, PG thread

IP 54 IP 65 Pg

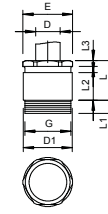
| Type | Thread | Pack. pcs | Weight kg/100 pcs. | Item No. |
|---------------|---------|-----------|--------------------|-----------|
| 160 MS PG 7 | Pg 7 | 50 | 0,770 | 2080 07 9 |
| 160 MS PG 9 | Pg 9 | 50 | 1,270 | 2080 09 5 |
| 160 MS PG11 | Pg 11 | 25 | 1,820 | 2080 11 7 |
| 160 MS PG13.5 | Pg 13,5 | 50 | 2,240 | 2080 13 3 |
| 160 MS PG16 | Pg 16 | 25 | 2,850 | 2080 16 8 |
| 160 MS PG21 | Pg 21 | 25 | 4,320 | 2080 21 4 |
| 160 MS PG29 | Pg 29 | 10 | 7,610 | 2080 28 1 |
| 160 MS PG36 | Pg 36 | 10 | 14,400 | 2080 36 2 |
| 160 MS PG42 | Pg 42 | 5 | 20,100 | 2080 42 7 |
| 160 MS PG48 | Pg 48 | 5 | 28,650 | 2080 48 6 |

CuZn Brass /100 pc.

N Nickel-plated

| G | D | D1 | SW | E | L max. | L1 | L2 | L3 |
|---------|-------|----|----|------|--------|-----|------|-----|
| | mm | mm | mm | mm | mm | mm | mm | mm |
| Pg 7 | 5-7 | 14 | 13 | 14.3 | 15 | 5 | 10 | 2.5 |
| Pg 9 | 6-8 | 17 | 15 | 16.6 | 16 | 6 | 10.5 | 2.5 |
| Pg 11 | 8-10 | 20 | 18 | 20 | 17 | 6 | 11 | 3 |
| Pg 13.5 | 8-10 | 22 | 20 | 22.2 | 18 | 6.5 | 12.5 | 3 |
| Pg 16 | 8-10 | 24 | 22 | 24.4 | 19 | 6.5 | 13.5 | 3 |
| Pg 21 | 17-19 | 30 | 28 | 31.2 | 22 | 7 | 15 | 3.5 |
| Pg 29 | 24-26 | 39 | 37 | 41 | 24 | 8 | 16.5 | 4 |
| Pg 36 | 31-33 | 50 | 47 | 50.5 | 29 | 9 | 19.5 | 4.5 |
| Pg 42 | 37-39 | 57 | 54 | 59.5 | 33 | 10 | 22 | 6 |
| Pg 48 | 43-45 | 64 | 60 | 65 | 34 | 10 | 23 | 6 |

Dimensions



Cable gland, PG cutting ring

IP 54 IP 65 Pg

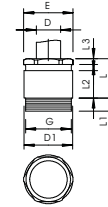
| Type | Thread | Pack. pcs | Weight kg/100 pcs. | Item No. |
|-------------|--------|-----------|--------------------|-----------|
| 161 MS PG21 | Pg 21 | 25 | 5,150 | 2080 56 7 |

CuZn Brass /100 pc.

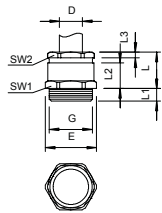
N Nickel-plated

| G | D | D1 | SW | E | L max. | L1 | L2 | L3 |
|-------|---------|----|----|------|--------|----|----|-----|
| | mm | mm | mm | mm | mm | mm | mm | mm |
| Pg 21 | 10-20.5 | 30 | 28 | 31.2 | 22 | 7 | 15 | 3.5 |

Dimensions



Cable gland, M cutting ring



IP 54 IP 65 M

| Type | Thread | Pack. pcs | Weight kg/100 pcs. | Item No. |
|------------|-----------|-----------|--------------------|-----------|
| 162 MS M16 | M16 x 1,5 | 50 | 1,814 | 2083 71 2 |
| 162 MS M20 | M20 x 1,5 | 25 | 2,520 | 2083 71 6 |
| 162 MS M25 | M25 x 1,5 | 25 | 3,388 | 2083 72 0 |
| 162 MS M32 | M32 x 1,5 | 10 | 5,004 | 2083 72 4 |
| 162 MS M40 | M40 x 1,5 | 10 | 8,720 | 2083 72 8 |
| 162 MS M50 | M50 x 1,5 | 5 | 15,800 | 2083 73 2 |
| 162 MS M63 | M63 x 1,5 | 5 | 21,600 | 2083 73 6 |

CuZn Brass

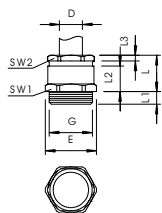
/100 pc.

N Nickel-plated

Dimensions

| G | D mm | SW1 mm | SW2 mm | E mm | L1 mm | L2 mm |
|-----------|----------|--------|--------|------|-------|-------|
| M16 x 1.5 | 5-9.5 | 17 | 15 | 18.9 | 7 | 16 |
| M20 x 1.5 | 7.5-13.5 | 22 | 20 | 24.4 | 7 | 18 |
| M25 x 1.5 | 10-20.5 | 32 | 28 | 35.5 | 8 | 22 |
| M32 x 1.5 | 18-29 | 40 | 37 | 43.5 | 8.5 | 24 |
| M40 x 1.5 | 24-31 | 50 | 47 | 54 | 8.5 | 29 |
| M50 x 1.5 | 30-42 | 58 | 54 | 62.1 | 9.5 | 33 |
| M63 x 1.5 | 36-47 | 65 | 60 | 69 | 10 | 10 |

Cable gland, PG cutting ring



IP 54 IP 65 Pg

| Type | Thread | Pack. pcs | Weight kg/100 pcs. | Item No. |
|---------------|---------|-----------|--------------------|-----------|
| 162 MS PG 9 | Pg 9 | 50 | 1,250 | 2082 51 9 |
| 162 MS PG11 | Pg 11 | 50 | 1,960 | 2082 50 0 |
| 162 MS PG13.5 | Pg 13,5 | 50 | 2,630 | 2082 52 7 |
| 162 MS PG16 | Pg 16 | 25 | 3,190 | 2082 54 3 |
| 162 MS PG21 | Pg 21 | 25 | 5,240 | 2082 57 8 |
| 162 MS PG29 | Pg 29 | 10 | 9,260 | 2082 59 4 |
| 162 MS PG36 | Pg 36 | 10 | 16,490 | 2082 61 6 |

CuZn Brass

/100 pc.

N Nickel-plated

Dimensions

| G | D mm | SW1 mm | SW2 mm | E mm | L max. mm | L1 mm | L2 mm | L3 mm |
|---------|----------|--------|--------|------|-----------|-------|-------|-------|
| Pg 9 | 5-9.5 | 17 | 15 | 18.9 | 16 | 6 | 10.5 | 2.5 |
| Pg 11 | 7.5-11.5 | 20 | 18 | 22.2 | 17 | 6 | 11 | 3 |
| Pg 13.5 | 7.5-13.5 | 22 | 20 | 24.4 | 18 | 6.5 | 12.5 | 3 |
| Pg 16 | 7.5-15.5 | 24 | 22 | 26.7 | 19 | 6.5 | 13.5 | 3 |
| Pg 21 | 10-20.5 | 30 | 28 | 33.5 | 22 | 7 | 15 | 3.5 |
| Pg 29 | 18-29 | 40 | 37 | 43.5 | 24 | 8 | 16.5 | 4 |
| Pg 36 | 24-37 | 50 | 47 | 54 | 29 | 9 | 19.5 | 4.5 |

Cable gland, small sealing ring, M

IP 54 IP 65 M

| Type | Thread | Pack. pcs | Weight kg/100 pcs. | Item No. |
|------------|-----------|-----------|--------------------|-----------|
| 163 MS M12 | M12 x 1,5 | 50 | 0,850 | 2083 61 2 |
| 163 MS M16 | M16 x 1,5 | 50 | 1,160 | 2083 62 0 |
| 163 MS M20 | M20 x 1,5 | 25 | 2,210 | 2083 63 9 |
| 163 MS M25 | M25 x 1,5 | 25 | 4,550 | 2083 64 7 |
| 163 MS M32 | M32 x 1,5 | 10 | 8,210 | 2083 65 5 |
| 163 MS M40 | M40 x 1,5 | 10 | 14,230 | 2083 66 3 |
| 163 MS M50 | M50 x 1,5 | 5 | 20,540 | 2083 67 1 |
| 163 MS M63 | M63 x 1,5 | 5 | 30,000 | 2083 69 8 |

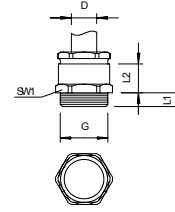
CuZn Brass

/100 pc.

N Nickel-plated

| G | D mm | SW1 mm | SW2 mm | E mm | L1 mm | L2 mm |
|-----------|-------|--------|--------|------|-------|-------|
| M12 x 1.5 | 5-7 | 14 | 13 | 15.5 | 7 | 10 |
| M16 x 1.5 | 6-8 | 17 | 15 | 18.9 | 7 | 10.5 |
| M20 x 1.5 | 8-10 | 22 | 20 | 24.4 | 7 | 12.5 |
| M25 x 1.5 | 17-19 | 34 | 28 | 35.5 | 8 | 15 |
| M32 x 1.5 | 24-26 | 42 | 37 | 43.5 | 8.5 | 16.5 |
| M40 x 1.5 | 31-33 | 52 | 47 | 54 | 8.5 | 19.5 |
| M50 x 1.5 | 37-39 | 57 | 54 | 62.1 | 10.5 | 23 |
| M63 x 1.5 | 43-45 | 65 | 60 | 69 | 10.5 | 23 |

Dimensions



Cable gland, small sealing ring, PG

IP 54 IP 65 Pg

| Type | Thread | Pack. pcs | Weight kg/100 pcs. | Item No. |
|---------------|---------|-----------|--------------------|-----------|
| 163 MS PG 7 | Pg 7 | 50 | 0,850 | 2082 07 1 |
| 163 MS PG 9 | Pg 9 | 50 | 1,160 | 2082 09 8 |
| 163 MS PG11 | Pg 11 | 25 | 1,690 | 2082 10 1 |
| 163 MS PG13.5 | Pg 13.5 | 25 | 2,210 | 2082 13 6 |
| 163 MS PG16 | Pg 16 | 25 | 2,960 | 2082 16 0 |
| 163 MS PG21 | Pg 21 | 25 | 4,550 | 2082 21 7 |
| 163 MS PG29 | Pg 29 | 10 | 8,210 | 2082 29 2 |
| 163 MS PG36 | Pg 36 | 10 | 14,230 | 2082 36 5 |
| 163 MS PG42 | Pg 42 | 5 | 20,540 | 2082 41 1 |
| 163 MS PG48 | Pg 48 | 5 | 30,050 | 2082 48 9 |

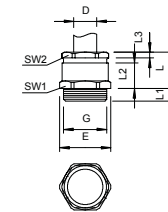
CuZn Brass

/100 pc.

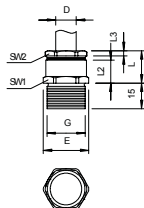
N Nickel-plated

| G | D mm | SW1 mm | SW2 mm | E mm | L max. mm | L1 mm | L2 mm | L3 mm |
|---------|-------|--------|--------|------|-----------|-------|-------|-------|
| Pg 7 | 5-7 | 14 | 13 | 15.5 | 15 | 5 | 10 | 2.5 |
| Pg 9 | 6-8 | 17 | 15 | 18.9 | 16 | 6 | 10.5 | 2.5 |
| Pg 11 | 8-10 | 20 | 18 | 22.2 | 17 | 6 | 11 | 3 |
| Pg 13.5 | 8-10 | 22 | 20 | 24.4 | 18 | 6.5 | 12 | 3 |
| Pg 16 | 8-10 | 24 | 22 | 26.7 | 19 | 6.5 | 13.5 | 3 |
| Pg 21 | 17-19 | 30 | 28 | 33.5 | 22 | 7 | 15 | 3.5 |
| Pg 29 | 24-26 | 40 | 37 | 43.5 | 24 | 8 | 16.5 | 4 |
| Pg 36 | 31-33 | 50 | 47 | 54 | 29 | 9 | 19.5 | 4.5 |
| Pg 42 | 37-39 | 57 | 54 | 61 | 33 | 10 | 22 | 6 |
| Pg 48 | 43-45 | 64 | 60 | 69 | 34 | 10 | 23 | 6 |

Dimensions



Cable gland, long PG thread



IP 54 IP 65 Pg

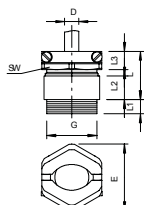
| Type | Thread | Pack. pcs | Weight kg/100 pcs. | Item No. |
|---------------|---------|-----------|--------------------|-----------|
| 163 L MS PG 9 | Pg 9 | 50 | 1,420 | 2083 09 4 |
| 163 L MS PG11 | Pg 11 | 50 | 2,100 | 2083 11 6 |
| 163 L MS PG13 | Pg 13,5 | 50 | 2,580 | 2083 13 2 |
| 163 L MS PG16 | Pg 16 | 25 | 3,010 | 2083 16 7 |
| 163 L MS PG21 | Pg 21 | 25 | 5,310 | 2083 21 3 |
| 163 L MS PG29 | Pg 29 | 10 | 10,120 | 2083 29 9 |

CuZn Brass /100 pc.
N Nickel-plated

Dimensions

| G | D | SW1 | SW2 | E | L max. mm | L2 | L3 |
|---------|-------|-----|-----|------|-----------|------|-----|
| mm | | | | | | | |
| Pg 9 | 6-8 | 17 | 15 | 18.9 | 16 | 10.5 | 2.5 |
| Pg 11 | 8-10 | 20 | 18 | 22.2 | 17 | 11 | 3 |
| Pg 13.5 | 8-10 | 22 | 20 | 24.4 | 18 | 12.5 | 3 |
| Pg 16 | 8-10 | 24 | 22 | 26.7 | 19 | 13.5 | 3 |
| Pg 21 | 17-19 | 30 | 28 | 33.5 | 22 | 15 | 3.5 |
| Pg 29 | 24-26 | 40 | 37 | 43.5 | 24 | 16.5 | 4 |

Cable gland, PG strain relief



IP 54 IP 65 Pg

| Type | Thread | Surface finish | Pack. pcs | Weight kg/100 pcs. | Item No. |
|---------------|---------|----------------|-----------|--------------------|-----------|
| 159 MS PG 7 | Pg 7 | Nickel-plated | 50 | 1,960 | 2046 07 5 |
| 159 MS PG 9 | Pg 9 | Nickel-plated | 50 | 2,460 | 2046 09 1 |
| 159 MS PG11 | Pg 11 | Nickel-plated | 50 | 3,250 | 2046 11 3 |
| 159 MS PG13.5 | Pg 13,5 | Nickel-plated | 50 | 3,830 | 2046 12 1 |
| 159 MS PG16 | Pg 16 | Nickel-plated | 25 | 5,700 | 2046 16 4 |
| 159 MS PG21 | Pg 21 | Nickel-plated | 25 | 7,590 | 2046 21 0 |
| 159 MS PG29 | Pg 29 | Nickel-plated | 10 | 14,970 | 2046 29 6 |
| 159 MS PG36 | Pg 36 | Nickel-plated | 5 | 22,030 | 2046 36 9 |
| 159 MS PG42 | Pg 42 | Nickel-plated | 5 | 41,070 | 2046 42 3 |
| 159 MS PG48 | Pg 48 | Nickel-plated | 4 | 46,250 | 2046 48 2 |

CuZn Brass /100 pc.
N Nickel-plated

Dimensions

| G | D | SW1 | SW2 | E | L max. mm | L1 | L2 | L3 |
|---------|-------|-----|-----|------|-----------|-----|------|------|
| mm | | | | | | | | |
| Pg 7 | 5-7 | 14 | 16 | 17.5 | 22 | 5 | 10 | 9.3 |
| Pg 9 | 6-8 | 17 | 19 | 20.5 | 24 | 6 | 10.5 | 10.6 |
| Pg 11 | 8-10 | 20 | 22 | 24.5 | 25 | 6 | 11 | 11.3 |
| Pg 13.5 | 8-10 | 22 | 24 | 27 | 26 | 6.5 | 12.5 | 11.3 |
| Pg 16 | 8-10 | 24 | 26 | 29 | 28 | 6.5 | 13.5 | 11.8 |
| Pg 21 | 17-19 | 30 | 33 | 37 | 32 | 7 | 15 | 13.3 |
| Pg 29 | 24-26 | 40 | 42 | 46.5 | 34 | 8 | 16.5 | 13.8 |
| Pg 36 | 31-33 | 50 | 52 | 57 | 40 | 9 | 19.5 | 15.8 |
| Pg 42 | 37-39 | 57 | 59 | 65 | 43 | 10 | 22 | 16.3 |
| Pg 48 | 43-45 | 64 | 64 | 70 | 44 | 10 | 23 | 16.3 |

Locknut, metric thread

M

| Type | Thread | SW mm | Dim. E mm | Dim. L mm | Pack. pcs | Weight kg/100 pcs. | Item No. |
|------------|-----------|----------|-----------------|-----------------|--------------|-----------------------|-----------|
| 169 MS M12 | M12 x 1,5 | 15 | 16.6 | 3 | 100 | 0,220 | 2091 60 7 |
| 169 MS M16 | M16 x 1,5 | 20 | 22.1 | 2.8 | 100 | 0,310 | 2091 61 5 |
| 169 MS M20 | M20 x 1,5 | 24 | 25.6 | 3 | 100 | 0,580 | 2091 62 3 |
| 169 MS M25 | M25 x 1,5 | 30 | 33.2 | 3.5 | 100 | 0,880 | 2091 63 1 |
| 169 MS M32 | M32 x 1,5 | 35 | 38.7 | 4 | 100 | 1,120 | 2091 65 8 |
| 169 MS M40 | M40 x 1,5 | 45 | 49.8 | 4.5 | 50 | 1,920 | 2091 66 6 |
| 169 MS M50 | M50 x 1,5 | 55 | 60.4 | 5.5 | 50 | 3,070 | 2091 67 4 |
| 169 MS M63 | M63 x 1,5 | 70 | 77.6 | 6 | 25 | 5,720 | 2091 68 2 |
| 169 MS M75 | M75 x 1,5 | 90 | 100 | 8 | 3 | 16,800 | 2091 68 5 |

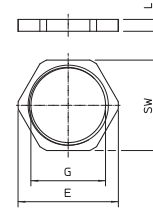
CuZn Brass

/100 pcs.

N Nickel-plated

Locknuts DIN 46319 with metric thread IEC 423.

* Prices according to DEL notation.



Locknut, metric thread with cutting teeth

M

| Type | Thread | SW mm | Dim. E mm | Dim. L mm | Pack. pcs | Weight kg/100 pcs. | Item No. |
|-------------|----------|----------|-----------------|-----------------|--------------|-----------------------|-----------|
| 169 MSS M12 | M 12x1,5 | 15 | 17.3 | 4.5 | 50 | 0,360 | 2091 70 5 |
| 169 MSS M16 | M 16x1,5 | 19 | 21.9 | 4.5 | 50 | 0,490 | 2091 70 9 |
| 169 MSS M20 | M 20x1,5 | 24 | 27.7 | 4.5 | 50 | 0,760 | 2091 71 3 |
| 169 MSS M25 | M 25x1,5 | 30 | 34.6 | 4.5 | 50 | 1,190 | 2091 71 7 |
| 169 MSS M32 | M 32x1,5 | 36 | 41.5 | 4.5 | 50 | 1,230 | 2091 72 1 |
| 169 MSS M40 | M 40x1,5 | 46 | 53.1 | 5 | 25 | 2,590 | 2091 72 5 |
| 169 MSS M50 | M 50x1,5 | 60 | 69.2 | 5 | 25 | 5,070 | 2091 72 9 |
| 169 MSS M63 | M 63x1,5 | 70 | 80.8 | 6 | 25 | 5,910 | 2091 73 3 |

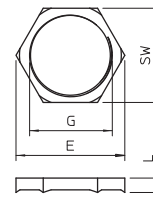
CuZn Brass

/100 pcs.

N Nickel-plated

Locknuts DIN 46319 with metric thread IEC 423.

* Prices according to DEL notation.



Locknut, PG thread

Pg

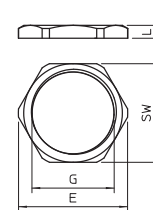
| Type | Thread | SW mm | Dim. E mm | Dim. L mm | Pack. pcs | Weight kg/100 pcs. | Item No. |
|---------------|---------|----------|-----------------|-----------------|--------------|-----------------------|-----------|
| 169 MS PG 7 | Pg 7 | 15 | 16.6 | 2.8 | 100 | 0,180 | 2091 07 0 |
| 169 MS PG 9 | Pg 9 | 18 | 20 | 2.8 | 100 | 0,260 | 2091 09 7 |
| 169 MS PG11 | Pg 11 | 21 | 23.5 | 3 | 100 | 0,290 | 2091 11 9 |
| 169 MS PG13.5 | Pg 13,5 | 23 | 25.5 | 3 | 100 | 0,364 | 2091 13 5 |
| 169 MS PG16 | Pg 16 | 26 | 29 | 3 | 100 | 0,460 | 2091 15 1 |
| 169 MS PG21 | Pg 21 | 32 | 35.5 | 3.5 | 100 | 0,720 | 2091 21 6 |
| 169 MS PG29 | Pg 29 | 41 | 45 | 4 | 100 | 1,320 | 2091 29 1 |
| 169 MS PG36 | Pg 36 | 51 | 56 | 5 | 50 | 2,100 | 2091 36 4 |
| 169 MS PG42 | Pg 42 | 60 | 65 | 5 | 50 | 3,260 | 2091 42 9 |
| 169 MS PG48 | Pg 48 | 64 | 69 | 5.5 | 25 | 3,270 | 2091 48 8 |

CuZn Brass

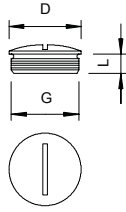
/100 pcs.

N Nickel-plated

Locknuts, part M to DIN 46320 with Pg thread to DIN 40430. * Price according to DEL notation.



Screw plug, metric thread



M

| Type | Thread | Dim. D mm | Dim. L mm | Pack. pcs | Weight kg/100 pcs. | Item No. |
|------------|-----------|--------------|--------------|--------------|-----------------------|-----------|
| 168 MS M12 | M12 x 1,5 | 16 | 5 | 100 | 0,390 | 2090 51 1 |
| 168 MS M16 | M16 x 1,5 | 20 | 6 | 100 | 0,640 | 2090 53 8 |
| 168 MS M20 | M20 x 1,5 | 22 | 6.5 | 100 | 0,930 | 2090 54 6 |
| 168 MS M25 | M25 x 1,5 | 28 | 7 | 50 | 1,850 | 2090 55 4 |
| 168 MS M32 | M32 x 1,5 | 35 | 8 | 50 | 2,810 | 2090 56 2 |
| 168 MS M40 | M40 x 1,5 | 45 | 8 | 50 | 5,290 | 2090 57 0 |
| 168 MS M50 | M50 x 1,5 | 55 | 9 | 25 | 6,310 | 2090 58 9 |
| 168 MS M63 | M63 x 1,5 | 68 | 10 | 25 | 12,570 | 2090 59 7 |

CuZn Brass

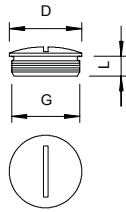
/100 pc.

N Nickel-plated

Screw plug in accordance with DIN 46320, with metric thread to DIN EN 60423 or ISO 68.

* Prices according to DEL notation.

Screw plug, PG thread



Pg

| Type | Thread | Dim. D mm | Dim. L mm | Pack. pcs | Weight kg/100 pcs. | Item No. |
|-------------|---------|--------------|--------------|--------------|-----------------------|-----------|
| 168 MS PG 7 | Pg 7 | 14 | 5 | 100 | 0,410 | 2090 07 4 |
| 168 MS PG 9 | Pg 9 | 17 | 6 | 100 | 0,530 | 2090 09 0 |
| 168 MS PG11 | Pg 11 | 20 | 6 | 100 | 0,840 | 2090 11 2 |
| 168 MS PG13 | Pg 13,5 | 22 | 6.5 | 100 | 0,930 | 2090 13 9 |
| 168 MS PG16 | Pg 16 | 24 | 6.5 | 100 | 1,300 | 2090 16 3 |
| 168 MS PG21 | Pg 21 | 30 | 7 | 50 | 2,420 | 2090 20 1 |
| 168 MS PG29 | Pg 29 | 39 | 8 | 50 | 4,310 | 2090 29 5 |
| 168 MS PG36 | Pg 36 | 50 | 9 | 50 | 7,800 | 2090 36 8 |
| 168 MS PG42 | Pg 42 | 57 | 10 | 25 | 11,710 | 2090 42 2 |
| 168 MS PG48 | Pg 48 | 64 | 10 | 25 | 15,260 | 2090 48 1 |

CuZn Brass

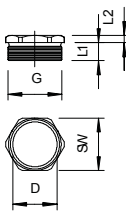
/100 pc.

N Nickel-plated

Screw plug in accordance with DIN 46320, with Pg thread to DIN EN 40430.

* Prices according to DEL notation.

Pressure screw, PG thread



Pg

| Type | Thread | Dim. D mm | Dim. SW mm | Dim. E mm | Dim. L1 mm | Dim. L2 mm | Pack. pcs | Weight kg/100 pcs. | Item No. |
|-------------|--------|--------------|---------------|--------------|---------------|---------------|--------------|-----------------------|-----------|
| 164 MS PG11 | Pg 11 | 15 | 18 | 20 | 6 | 3 | 100 | 0,590 | 2084 11 2 |
| 164 MS PG16 | Pg 16 | 18.5 | 22 | 24.4 | 7.5 | 3 | 100 | 0,910 | 2084 16 3 |
| 164 MS PG21 | Pg 21 | 24 | 28 | 31.2 | 8 | 3.5 | 50 | 1,560 | 2084 20 1 |

CuZn Brass

/100 pc.

N Nickel-plated

Pressure screw (Part 3) in accordance with DIN 46320, with Pg thread to DIN EN 40430.

* Prices according to DEL notation.

Dimensions

| G | D mm | SW mm | E mm | L1 mm | L2 mm |
|-------|---------|----------|---------|----------|----------|
| PG 11 | 15 | 18 | 20 | 6 | 3 |
| Pg 16 | 18.5 | 22 | 24.4 | 7.5 | 3 |
| Pg 21 | 24 | 28 | 31.2 | 8 | 3.5 |

Pressure screw, PG strain relief

Pg

| Type | Thread | Pack. pcs | Weight kg/100 pcs. | Item No. |
|---------------|---------|--------------|-----------------------|-----------|
| 157 MS PG 7 | Pg 7 | 100 | 1,200 | 2013 06 1 |
| 157 MS PG 9 | Pg 9 | 100 | 1,500 | 2013 09 6 |
| 157 MS PG11 | Pg 11 | 100 | 2,100 | 2013 11 8 |
| 157 MS PG13.5 | Pg 13,5 | 100 | 2,200 | 2013 13 4 |
| 157 MS PG16 | Pg 16 | 50 | 3,400 | 2013 16 9 |
| 157 MS PG21 | Pg 21 | 50 | 4,500 | 2013 21 5 |
| 157 MS PG29 | Pg 29 | 25 | 6,800 | 2013 29 0 |

CuZn Brass

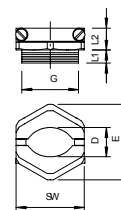
/100 pc.

N Nickel-plated

Pressure screw with centrally acting transverse clip strain relief, rust-proof stainless steel screws.

With bend protection and strain relief.

* Prices according to DEL notation.



| G | D mm | SW mm | E mm | L1 mm | L2 mm |
|---------|----------|----------|---------|----------|----------|
| Pg 7 | 6-7.5 | 16 | 17.5 | 5.5 | 9.3 |
| Pg 9 | 7-9.5 | 19 | 20.5 | 6 | 10.6 |
| Pg 11 | 8.5-11.5 | 22 | 24 | 6 | 11.3 |
| Pg 13.5 | 10-13.5 | 24 | 27 | 6.5 | 11.3 |
| Pg 16 | 11-15.5 | 26 | 30 | 6.5 | 11.8 |
| Pg 21 | 14-20.5 | 33 | 38 | 7.5 | 13.3 |
| Pg 29 | 20-29 | 42 | 46.5 | 8 | 13.8 |

Dimensions

Expansion piece, metric thread

M

| Type | External thread | Internal thread | Pack. pcs | Weight kg/100 pcs. | Item No. |
|-----------------|--------------------|--------------------|--------------|-----------------------|-----------|
| 165 ADA M12-16 | M12 | M16 | 50 | 1,030 | 2088 28 0 |
| 165 ADA M16-20 | M16 | M20 | 50 | 1,430 | 2088 28 1 |
| 165 ADA M20-25 | M20 | M25 | 50 | 2,090 | 2088 28 2 |
| 165 ADA M25-32 | M25 | M32 | 50 | 2,710 | 2088 28 3 |
| 165 ADA M32-40 | M32 | M40 | 25 | 5,180 | 2088 28 4 |
| 165 ADA M40-50 | M40 | M50 | 10 | 10,150 | 2088 28 5 |
| 165 ADA M 50-63 | M50 | M63 | 5 | 13,060 | 2088 28 6 |

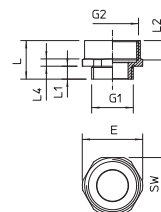
CuZn Brass

/100 pc.

N Nickel-plated

The areas of application for brass cable glands range from junction boxes as a distribution/-connection box up to large industrial applications for safe floor routing to switchgear cabinets with a control and distribution function. For high mechanical requirements, OBO can offer the entire family of extensions (Part K) to DIN 46320.

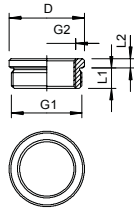
* Prices according to DEL notation.



| G1 | G2 | SW mm | E mm | L mm | L1 mm | L2 mm | D mm |
|-----|-----|----------|---------|---------|----------|----------|---------|
| M12 | M16 | 18 | 20 | 16 | 5 | 7 | 8 |
| M16 | M20 | 22 | 24.5 | 16.7 | 5 | 8 | 12 |
| M20 | M25 | 27 | 29 | 18.5 | 6.4 | 9 | 15 |
| M25 | M32 | 34 | 35.8 | 20.7 | 7.4 | 8 | 20.8 |
| M32 | M40 | 42 | 45.5 | 23.8 | 8 | 10 | 26 |
| M40 | M50 | 52 | 58 | 30.5 | 8.2 | 12.5 | 33.8 |
| M50 | M63 | 65 | 69.9 | 33 | 9.2 | 16 | 43.4 |

Dimensions

Reduction, metric thread



M

| Type | External thread | Internal thread | Dim. D mm | Thread length mm | Dim. L2 mm | Pack. pcs | Weight kg/100 pcs. | Item No. |
|-----------------|-----------------|-----------------|-----------|------------------|------------|-----------|--------------------|-----------|
| 167 R MS M16-12 | M16 | M12 | 20 | 6 | 8.5 | 50 | 0,880 | 2089 50 5 |
| 167 R MS M20-12 | M20 | M12 | 24 | 6.5 | 9 | 50 | 1,340 | 2089 51 3 |
| 167 R MS M20-16 | M20 | M16 | 24 | 6.5 | 9 | 50 | 1,480 | 2089 52 1 |
| 167 R MS M25-16 | M25 | M16 | 30 | 7 | 10 | 50 | 3,220 | 2089 54 8 |
| 167 R MS M25-20 | M25 | M20 | 30 | 7 | 10 | 50 | 2,700 | 2089 55 6 |
| 167 R MS M32-20 | M32 | M20 | 39 | 8 | 11.5 | 50 | 6,120 | 2089 56 4 |
| 167 R MS M32-25 | M32 | M25 | 39 | 8 | 11.5 | 50 | 4,500 | 2089 57 2 |
| 167 R MS M40-25 | M40 | M25 | 50 | 6 | 12.5 | 25 | 9,960 | 2089 58 0 |
| 167 R MS M40-32 | M40 | M32 | 50 | 9 | 12.5 | 25 | 6,840 | 2089 59 9 |
| 167 R MS M50-32 | M50 | M32 | 57 | 10 | 14 | 25 | 16,300 | 2089 60 2 |
| 167 R MS M50-40 | M50 | M40 | 57 | 10 | 14 | 25 | 10,250 | 2089 61 0 |
| 167 R MS M63-40 | M63 | M40 | 64 | 10 | 14 | 10 | 30,080 | 2089 62 9 |
| 167 R MS M63-50 | M63 | M50 | 64 | 10 | 14 | 10 | 10,090 | 2089 63 7 |

CuZn Brass

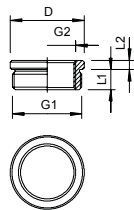
/100 pcs.

N Nickel-plated

Reduction (Part H) in accordance with DIN 46320, with metric thread to DIN EN 60423 or ISO 68.

* Prices according to DEL notation.

Reduction, PG thread



Pg

| Type | External thread | Internal thread | Dim. D mm | Thread length mm | Dim. L2 mm | Pack. pcs | Weight kg/100 pcs. | Item No. |
|------------------|-----------------|-----------------|-----------|------------------|------------|-----------|--------------------|-----------|
| 167 R MS PG9-7 | Pg 9 | Pg 7 | 17 | 6 | 2.5 | 50 | 0,430 | 2089 02 5 |
| 167 R MS PG11-7 | Pg 11 | Pg 7 | 20 | 6 | 2.5 | 50 | 1,030 | 2089 04 1 |
| 167 R MS PG11-9 | Pg 11 | Pg 9 | 20 | 6 | 2.5 | 50 | 0,650 | 2089 07 6 |
| 167 R MS PG13-7 | Pg 13,5 | Pg 7 | 22 | 6.5 | 2.5 | 50 | 1,520 | 2089 09 2 |
| 167 R MS PG13-9 | Pg 13,5 | Pg 9 | 22 | 6.5 | 2.5 | 50 | 1,120 | 2089 11 4 |
| 167 R MS PG13-11 | Pg 13,5 | Pg 11 | 22 | 6.5 | 2.5 | 50 | 0,470 | 2089 13 0 |
| 167 R MS PG16-9 | Pg 16 | Pg 9 | 24 | 6.5 | 3 | 50 | 1,730 | 2089 15 7 |
| 167 R MS PG16-11 | Pg 16 | Pg 11 | 24 | 6.5 | 3 | 50 | 1,050 | 2089 17 3 |
| 167 R MS PG16-13 | Pg 16 | Pg 13,5 | 24 | 6.5 | 3 | 50 | 0,656 | 2089 20 3 |
| 167 R MS PG21-11 | Pg 21 | Pg 11 | 30 | 7 | 3 | 50 | 2,960 | 2089 23 8 |
| 167 R MS PG21-13 | Pg 21 | Pg 13,5 | 30 | 7 | 3 | 50 | 2,520 | 2089 25 4 |
| 167 R MS PG21-16 | Pg 21 | Pg 16 | 30 | 7 | 3 | 50 | 1,964 | 2089 27 0 |
| 167 R MS PG29-16 | Pg 29 | Pg 16 | 39 | 8 | 3.5 | 50 | 6,560 | 2089 29 7 |
| 167 R MS PG29-21 | Pg 29 | Pg 21 | 39 | 8 | 3.5 | 50 | 4,273 | 2089 31 9 |
| 167 R MS PG36-21 | Pg 36 | Pg 21 | 50 | 9 | 3.5 | 25 | 11,660 | 2089 33 5 |
| 167 R MS PG36-29 | Pg 36 | Pg 29 | 50 | 9 | 3.5 | 25 | 6,980 | 2089 35 1 |
| 167 R MS PG42-36 | Pg 42 | Pg 36 | 57 | 10 | 4 | 25 | 6,750 | 2089 40 8 |
| 167 R MS PG48-36 | Pg 48 | Pg 36 | 64 | 10 | 4 | 25 | 12,840 | 2089 42 4 |
| 167 R MS PG48-42 | Pg 48 | Pg 42 | 64 | 10 | 4 | 25 | 6,230 | 2089 44 0 |

CuZn Brass

/100 pcs.

N Nickel-plated

Reduction (Part H) to DIN 46320, with Pg thread to DIN 40430, as a transition from a PG thread hole to a smaller cable gland.

* Prices according to DEL notation.

Adapter expansion M - PG

M Pg

| Type | External thread | Internal thread | Pack. pcs | Weight kg/100 pcs. | Item No. |
|------------------|-----------------|-----------------|-----------|--------------------|-----------|
| 165 ADA M12-PG7 | M12 | PG7 | 20 | 0,590 | 2088 30 1 |
| 165 ADA M16-PG9 | M16 | PG9 | 20 | 9,110 | 2088 31 2 |
| 165 ADA M16-PG11 | M16 | PG11 | 20 | 2,220 | 2088 30 2 |
| 165 ADA M20-PG11 | M20 | PG11 | 20 | 1,760 | 2088 31 6 |
| 165 ADA M20-PG13 | M20 | PG13,5 | 20 | 1,320 | 2088 30 3 |
| 165 ADA M20-PG16 | M20 | PG16 | 20 | 1,650 | 2088 31 8 |
| 165 ADA M25-PG16 | M25 | PG16 | 20 | 2,540 | 2088 30 4 |
| 165 ADA M25-PG21 | M25 | PG21 | 20 | 2,330 | 2088 32 4 |
| 165 ADA M32-PG29 | M32 | PG29 | 10 | 4,850 | 2088 33 0 |
| 165 ADA M40-PG29 | M40 | PG29 | 10 | 7,150 | 2088 30 6 |
| 165 ADA M50-PG42 | M50 | PG42 | 10 | 10,110 | 2088 30 7 |
| 165 ADA M63-PG48 | M63 | PG48 | 4 | 20,080 | 2088 34 8 |

CuZn Brass

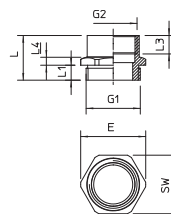
/100 pc.

N Nickel-plated

Adapter for converting a metric threaded drill hole to a Pg threaded drill hole.

| G1 | G2 | SW mm | E mm | L mm | L1 mm | L3 mm | D mm |
|-----|--------|-------|------|------|-------|-------|------|
| M12 | PG 7 | 14 | 15.5 | 16 | 6 | 9 | 8 |
| M16 | PG 9 | 17 | 19 | 16.5 | 5 | 7 | 12 |
| M16 | PG11 | 22 | 24.5 | 16 | 6 | 7.9 | 12.5 |
| M20 | PG11 | 22 | 24.5 | 17.6 | 6.5 | 10.2 | 15 |
| M20 | PG13.5 | 22 | 24.5 | 19 | 6.5 | 11.5 | 16 |
| M20 | PG16 | 14.9 | 23.9 | 19.6 | 6 | 9 | 11.5 |
| M25 | PG16 | 27 | 30 | 20.5 | 7 | 12.5 | 18.3 |
| M25 | PG21 | 30 | 33.5 | 22.2 | 7 | 13.5 | 20.5 |
| M32 | PG29 | 40 | 44 | 24.4 | 8 | 15 | 27.5 |
| M40 | PG29 | 43 | 46.2 | 24.4 | 8 | 15 | 31.8 |
| M50 | PG42 | 57 | 60.8 | 31 | 9 | 20 | 44 |
| M63 | PG48 | 65 | 69.8 | 33 | 10 | 21 | 52.2 |

Dimensions



Adapter reduction M - PG

M Pg

| Type | External thread | Internal thread | Pack. pcs | Weight kg/100 pcs. | Item No. |
|------------------|-----------------|-----------------|-----------|--------------------|-----------|
| 165 ADA M16-PG7 | M16 | PG7 | 20 | 5,130 | 2088 31 0 |
| 165 ADA M20-PG9 | M20 | PG9 | 20 | 1,100 | 2088 31 4 |
| 165 ADA M25-PG11 | M25 | PG11 | 20 | 1,940 | 2088 32 0 |
| 165 ADA M25-PG13 | M25 | PG13,5 | 20 | 1,610 | 2088 32 2 |
| 165 ADA M32-PG16 | M32 | PG16 | 10 | 3,790 | 2088 32 8 |
| 165 ADA M32-PG21 | M32 | PG21 | 10 | 1,730 | 2088 30 5 |
| 165 ADA M40-PG21 | M40 | PG21 | 10 | 6,980 | 2088 33 4 |
| 165 ADA M50-PG29 | M50 | PG29 | 5 | 11,220 | 2088 34 0 |
| 165 ADA M63-PG36 | M63 | PG36 | 5 | 16,950 | 2088 34 4 |
| 165 ADA M63-PG42 | M63 | PG42 | 5 | 10,460 | 2088 34 6 |

CuZn Brass

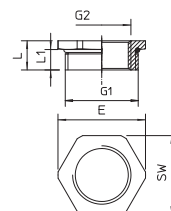
/100 pc.

N Nickel-plated

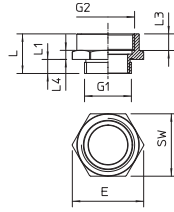
Adapter for reducing a metric threaded drill hole to a smaller Pg threaded drill hole.

| G1 | G2 | SW mm | E mm | L mm | L1 mm |
|-----|--------|-------|------|------|-------|
| M16 | PG 7 | 17 | 19 | 8 | 5 |
| M20 | PG 9 | 22 | 24.5 | 9 | 6 |
| M25 | PG11 | 27 | 30 | 10 | 7 |
| M25 | PG13.5 | 27 | 30 | 10 | 7 |
| M32 | PG16 | 34 | 36 | 11 | 8 |
| M32 | PG21 | 34 | 36 | 11 | 8 |
| M40 | PG21 | 43 | 46 | 12 | 8 |
| M50 | PG29 | 55 | 60 | 13 | 9 |
| M63 | PG36 | 65 | 69 | 14.2 | 10 |
| M63 | PG42 | 65 | 70 | 14.2 | 10 |

Dimensions



Adapter expansion PG - M



M Pg

| Type | External thread | Internal thread | Pack. pcs | Weight kg/100 pcs. | Item No. |
|------------------|-----------------|-----------------|-----------|--------------------|-----------|
| 165 ADA PG9-M16 | PG9 | M16 | 20 | 1,160 | 2088 29 1 |
| 165 ADA PG11-M16 | PG11 | M16 | 20 | 1,000 | 2088 29 2 |
| 165 ADA PG13-M20 | PG13,5 | M20 | 20 | 2,040 | 2088 29 3 |
| 165 ADA PG16-M20 | PG16 | M20 | 20 | 3,080 | 2088 29 4 |
| 165 ADA PG16-M25 | PG16 | M25 | 20 | 3,320 | 2088 29 5 |
| 165 ADA PG21-M25 | PG21 | M25 | 10 | 4,490 | 2088 29 6 |
| 165 ADA PG21-M32 | PG21 | M32 | 10 | 4,310 | 2088 29 7 |
| 165 ADA PG29-M40 | PG29 | M40 | 10 | 4,830 | 2088 29 8 |
| 165 ADA PG36-M50 | PG36 | M50 | 5 | 9,250 | 2088 29 9 |

CuZn Brass

/100 pc.

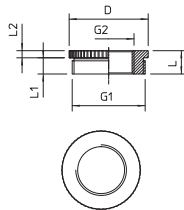
N Nickel-plated

Adapter for converting a Pg threaded drill hole to a larger metric threaded drill hole.

Dimensions

| G1 | G2 | SW mm | E mm | L mm | L1 mm | L3 mm | D mm |
|--------|-----|-------|------|------|-------|-------|------|
| PG 9 | M16 | 19 | 21 | 16 | 6 | 7.5 | 12 |
| PG11 | M16 | 20 | 22 | 17 | 6 | 10 | 12 |
| PG13.5 | M20 | 24 | 26 | 17.5 | 6.5 | 8.5 | 16 |
| PG16 | M20 | 27 | 29 | 17.5 | 6.5 | 8.3 | 18.4 |
| PG16 | M25 | 30 | 33.5 | 18.5 | 6.6 | 9.5 | 18.4 |
| PG21 | M25 | 32 | 35.5 | 19 | 7 | 10 | 23 |
| PG21 | M32 | 36 | 39 | 20 | 7 | 10.5 | 22.7 |
| PG29 | M40 | 43 | 46 | 21 | 8 | 10.8 | 32 |
| PG36 | M50 | 55 | 60 | 23 | 9 | 10.5 | 42 |

Adapter reduction PG - M



M Pg

| Type | External thread | Internal thread | Pack. pcs | Weight kg/100 pcs. | Item No. |
|------------------|-----------------|-----------------|-----------|--------------------|-----------|
| 165 ADA PG29-M25 | PG29 | M25 | 20 | 5,730 | 2088 28 9 |

CuZn Brass

/100 pc.

N Nickel-plated

Adapter for converting a Pg threaded drill hole to a metric threaded drill hole.

Dimensions

| G1 | G2 | SW mm | E mm | L mm | L1 mm | D mm |
|------|-----|-------|------|------|-------|------|
| PG29 | M25 | - | - | 11.5 | 8 | 39 |



Cutting ring

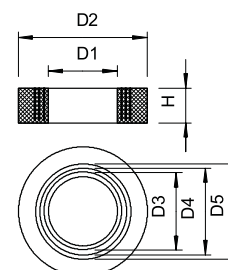
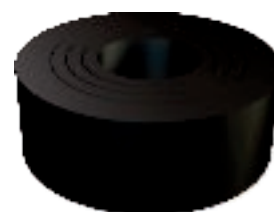
Pg

| Type | Size mm | Size | Dim. | Dim. | Dim. | Dim. | Dim. | Dim. | Pack. pcs | Weight kg/100 pcs. | Item No. |
|--------------|------------|------|----------|----------|----------|----------|----------|---------|--------------|-----------------------|-----------|
| | | | D1 mm | D2 mm | D3 mm | D4 mm | D5 mm | H mm | | | |
| 107 B PG9 | Pg 9 | M16 | 5 | 13.3 | 7.5 | 10 | 0 | 5.5 | 100 | 0,240 | 2029 10 3 |
| 107 B PG11 | Pg 11 | — | 7.5 | 16.5 | 10 | 12.5 | 0 | 6 | 100 | 0,230 | 2029 11 1 |
| 107 B PG13.5 | Pg 13.5 | M20 | 7.5 | 18.3 | 10 | 12.5 | 0 | 6 | 100 | 0,230 | 2029 13 8 |
| 107 B PG16 | Pg 16 | M25 | 7.5 | 20.4 | 10 | 12.5 | 15 | 7 | 100 | 0,320 | 2029 16 2 |
| 107 B PG21 | Pg 21 | — | 10 | 25.9 | 13 | 16 | 19 | 8 | 100 | 0,590 | 2029 21 9 |
| 107 B PG29 | Pg 29 | M32 | 18 | 34.7 | 21 | 24 | 27 | 9.5 | 100 | 1,160 | 2029 29 4 |
| 107 B PG36 | Pg 36 | M40 | 24 | 44.7 | 27 | 30 | 33 | 12 | 50 | 1,940 | 2029 36 7 |
| 107 B PG42 | Pg 42 | M50 | 30 | 51.7 | 33 | 36 | 39 | 14 | 50 | 2,710 | 2029 42 1 |
| 107 B PG48 | Pg 48 | M63 | 36 | 56.9 | 39 | 42 | 45 | 14 | 50 | 3,490 | 2029 48 0 |

NBR-SBR Rubber mixture

/100 pc.

Rubber cutting ring (cuttable sealing ring) to DIN 46320 for cone cable gland.



Pressure ring, PG thread

Pg

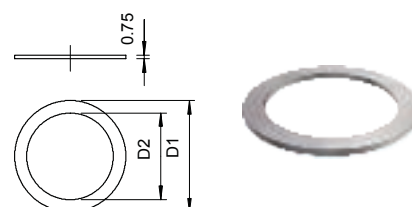
| Type | Size mm | Dim. | Dim. | Pack. pcs | Weight kg/100 pcs. | Item No. |
|------------------|------------|----------|----------|--------------|-----------------------|-----------|
| | | D1 mm | D2 mm | | | |
| 107 D PG7 GTP | Pg 7 | 11 | 8 | 100 | 0,020 | 2027 07 0 |
| 107 D PG9 GTP | Pg 9 | 13.5 | 10 | 100 | 0,038 | 2027 09 7 |
| 107 D PG11 GTP | Pg 11 | 16.5 | 12 | 100 | 0,061 | 2027 11 9 |
| 107 D PG13.5 GTP | Pg 13,5 | 18.5 | 14 | 100 | 0,066 | 2027 13 5 |
| 107 D PG16 GTP | Pg 16 | 20.5 | 16 | 100 | 0,074 | 2027 15 1 |
| 107 D PG21 GTP | Pg 21 | 26 | 21 | 50 | 0,100 | 2027 21 6 |

St Steel

/100 pc.

GTP Electrogalvanised, transparently passivated

Pressure ring, Part 7, to DIN 46320, suitable for plastic and brass glands to DIN 46320.



Connection thread sealing ring, metric

M

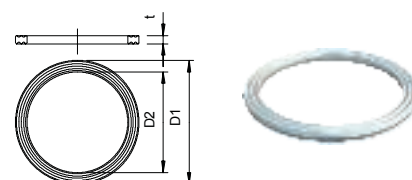


| Type | Size mm | Dim. | Dim. | Dim. | Pack. pcs | Weight kg/100 pcs. | Item No. |
|--------------|------------|----------|----------|---------|--------------|-----------------------|-----------|
| | | D1 mm | D2 mm | t mm | | | |
| 107 F M12 PE | M12 | 16.3 | 12 | 1 | 100 | 0,017 | 2030 00 4 |
| 107 F M16 PE | M16 | 20.9 | 16 | 1.1 | 100 | 0,018 | 2030 00 8 |
| 107 F M20 PE | M20 | 25.1 | 20 | 1.1 | 100 | 0,030 | 2030 01 2 |
| 107 F M25 PE | M25 | 31.3 | 25 | 1.4 | 100 | 0,060 | 2030 01 6 |
| 107 F M32 PE | M32 | 37.6 | 32 | 1.7 | 100 | 0,105 | 2030 02 0 |
| 107 F M40 PE | M40 | 49.1 | 40 | 1.7 | 100 | 0,200 | 2030 02 4 |
| 107 F M50 PE | M50 | 60.1 | 50 | 2 | 100 | 0,250 | 2030 02 8 |
| 107 F M63 PE | M63 | 73.8 | 63 | 2 | 100 | 0,290 | 2030 03 2 |

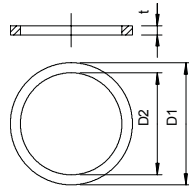
PE Polyethylene

/100 pc.

Connection thread sealing ring, suitable for all plastic cable glands with metric connection thread to DIN EN 60423 or ISO 68. The internal diameters of the sealing rings are designed in such a way that they can be premounted in a captive manner.



Connection thread sealing ring, metric



M

| Type | Size mm | Dim. D1 mm | Dim. D2 mm | Dim. t mm | Pack. pcs | Weight kg/100 pcs. | Item No. |
|----------------|------------|------------------|------------------|-----------------|--------------|-----------------------|------------------|
| 170 M16 | M16 | 19.9 | 16 | 2 | 100 | 0,040 | 2088 42 8 |
| 170 M20 | M20 | 24 | 20 | 2 | 100 | 0,066 | 2088 43 6 |
| 170 M25 | M25 | 30 | 25 | 3 | 100 | 0,170 | 2088 44 4 |
| 170 M32 | M32 | 38 | 32 | 3 | 100 | 0,270 | 2088 45 2 |
| 170 M40 | M40 | 47 | 40 | 3 | 50 | 0,330 | 2088 46 0 |
| 170 M50 | M50 | 57 | 50 | 3 | 50 | 0,440 | 2088 47 9 |

FA Fibre-proof material DIN 28091

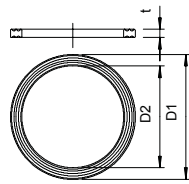
/100 pc.

Asbestos-free material.

Connection thread sealing ring, Part 9, to DIN 46320, suitable for all brass cable glands with metric connection thread to DIN EN 60423 or ISO 68.

Colour: green, graphitised on one side.

Connection thread sealing ring, PG



Pg



| Type | Size mm | Dim. D1 mm | Dim. D2 mm | Dim. t mm | Pack. pcs | Weight kg/100 pcs. | Item No. |
|------------------------|------------|------------------|------------------|-----------------|--------------|-----------------------|------------------|
| 107 F PG7 PE | Pg 7 | 16.5 | 12.1 | 1.6 | 100 | 0,017 | 2030 07 1 |
| 107 F PG9 PE | Pg 9 | 19 | 14.7 | 1.6 | 100 | 0,018 | 2030 09 8 |
| 107 F PG11 PE | Pg 11 | 23 | 18 | 1.8 | 100 | 0,029 | 2030 10 1 |
| 107 F PG13.5 PE | Pg 13.5 | 25 | 19.8 | 1.8 | 100 | 0,030 | 2030 13 6 |
| 107 F PG16 PE | Pg 16 | 27 | 21.8 | 1.8 | 100 | 0,038 | 2030 16 0 |
| 107 F PG21 PE | Pg 21 | 34 | 27.5 | 2.2 | 100 | 0,060 | 2030 21 7 |
| 107 F PG29 PE | Pg 29 | 44 | 36.2 | 2.2 | 100 | 0,105 | 2030 29 2 |
| 107 F PG36 PE | Pg 36 | 55.5 | 46.2 | 2.7 | 100 | 0,200 | 2030 36 5 |
| 107 F PG48 PE | Pg 48 | 69.5 | 58.5 | 3.2 | 100 | 0,290 | 2030 48 9 |

PE Polyethylene

/100 pc.

Connection thread sealing ring, in accordance with Part 9 to DIN 46320, however, dimensions may, according to material or function, deviate, suitable for all plastic cable glands with PG connection thread to DIN EN 40430, the internal diameter of the sealing rings are designed so that they can be captively pre-mounted.

O sealing ring for metric connection thread



M

| Type | Size mm | Dim. D mm | Dim. S mm | Pack. pcs | Weight kg/100 pcs. | Item No. |
|----------------|------------|-----------------|-----------------|--------------|-----------------------|------------------|
| 171 M12 | M12 | 10 | 1.5 | 100 | 0,007 | 2088 70 3 |
| 171 M16 | M16 | 13 | 1.5 | 100 | 0,008 | 2088 71 1 |
| 171 M20 | M20 | 18 | 1.5 | 100 | 0,011 | 2088 73 8 |
| 171 M25 | M25 | 22 | 1.5 | 100 | 0,012 | 2088 74 6 |
| 171 M32 | M32 | 29 | 2 | 100 | 0,035 | 2088 75 4 |
| 171 M40 | M40 | 36 | 2 | 50 | 0,045 | 2088 76 2 |
| 171 M50 | M50 | 46 | 2 | 50 | 0,052 | 2088 77 0 |
| 171 M63 | M63 | 59 | 2 | 25 | 0,056 | 2088 78 9 |

NBR Nitrile rubber

/100 pc.

O sealing rings, suitable as connection thread sealing rings for all plastic and brass cable glands with metric connection thread to DIN EN 60423 or ISO 68. The rings can be captively pre-mounted.

O sealing ring for PG connection thread

Pg

| Type | Size mm | Dim. D mm | Dim. S mm | Pack. pcs | Weight kg/100 pcs. | Item No. |
|-------------------|------------|-----------------|-----------------|--------------|-----------------------|------------------|
| 171 PG 9 | Pg 9 | 13 | 1.5 | 100 | 0,008 | 2088 81 9 |
| 171 PG11 | Pg 11 | 16 | 1.5 | 100 | 0,010 | 2088 82 7 |
| 171 PG13.5 | Pg 13.5 | 18 | 1.5 | 100 | 0,011 | 2088 83 5 |
| 171 PG16 | Pg 16 | 20 | 1.5 | 100 | 0,012 | 2088 84 3 |
| 171 PG21 | Pg 21 | 25 | 2 | 100 | 0,027 | 2088 85 1 |
| 171 PG29 | Pg 29 | 33 | 2 | 100 | 0,035 | 2088 87 8 |
| 171 PG36 | Pg 36 | 43 | 2 | 50 | 0,045 | 2088 88 6 |
| 171 PG42 | Pg 42 | 50 | 2 | 50 | 0,052 | 2088 89 4 |

NBR Nitrile rubber

/100 pc.

O sealing rings, suitable as connection thread sealing rings for all plastic and brass cable glands with Pg connection thread to DIN EN 60423 or ISO 68. The rings can be captively pre-mounted.



Dust protection plate, metric

M

| Type | Size mm | Dim. D mm | Dim. t mm | Pack. pcs | Weight kg/100 pcs. | Item No. |
|-----------------------|------------|-----------------|-----------------|--------------|-----------------------|------------------|
| 107 S VTEC M12 | M12 | 12 | 1.5 | 100 | 0,001 | 2028 87 0 |
| 107 S VTEC M16 | M16 | 16 | 1.5 | 100 | 0,002 | 2028 87 3 |
| 107 S VTEC M20 | M20 | 20 | 1.5 | 100 | 0,004 | 2028 87 5 |
| 107 S VTEC M25 | M25 | 25 | 1.5 | 100 | 0,008 | 2028 87 7 |
| 107 S VTEC M32 | M32 | 32 | 1.5 | 100 | 0,012 | 2028 88 0 |
| 107 S VTEC M40 | M40 | 40 | 1.5 | 100 | 0,022 | 2028 88 3 |
| 107 S VTEC M50 | M50 | 50 | 1.5 | 100 | 0,040 | 2028 88 5 |

ZPE Cellular polyethylene

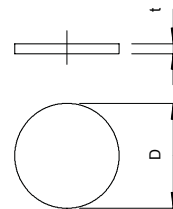
/100 pc.

Cellular polyethylene.

Small protective disc to protect the V-TEC VM and V-TEC VM MS cable glands against dust before the cable is installed.

Application: the discs are pre-mounted between the cap nut and the seal. They do not need to be removed when the cable is installed, but are simply passed through to the interior with the cable.

Note: the discs do not provide any mechanical protection.



Dust protection plate, PG

Pg

| Type | Size mm | Dim. D mm | Dim. t mm | Pack. pcs | Weight kg/100 pcs. | Item No. |
|------------------------|------------|-----------------|-----------------|--------------|-----------------------|------------------|
| 107 S VTEC PG7 | Pg 7 | 11 | 2 | 100 | 0,001 | 2028 89 1 |
| 107 S VTEC PG9 | Pg 9 | 14 | 2 | 100 | 0,002 | 2028 90 5 |
| 107 S VTEC PG11 | Pg 11 | 16.5 | 2 | 100 | 0,003 | 2028 91 3 |
| 107 S VTEC PG13 | Pg 13.5 | 18.5 | 2 | 100 | 0,004 | 2028 92 1 |
| 107 S VTEC PG16 | Pg 16 | 21 | 2 | 100 | 0,006 | 2028 94 8 |
| 107 S VTEC PG21 | Pg 21 | 26.5 | 2 | 100 | 0,010 | 2028 95 6 |
| 107 S VTEC PG29 | Pg 29 | 34.5 | 2 | 100 | 0,015 | 2028 96 4 |
| 107 S VTEC PG36 | Pg 36 | 44 | 3 | 100 | 0,035 | 2028 97 2 |
| 107 S VTEC PG42 | Pg 42 | 50 | 3 | 100 | 0,050 | 2028 98 0 |
| 107 S VTEC PG48 | Pg 48 | 56 | 3 | 100 | 0,060 | 2028 99 9 |

ZPE Cellular polyethylene

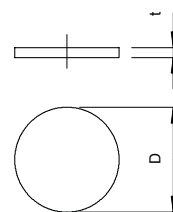
/100 pc.

Cellular polyethylene.

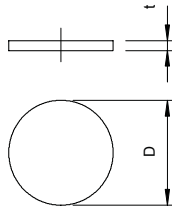
Small protective disc to protect the V-TEC and V-TEC MS cable glands against dust before the cable is installed.

Application: the discs are pre-mounted between the cap nut and the seal. They do not need to be removed when the cable is installed, but are simply passed through to the interior with the cable.

Note: the discs do not provide any mechanical protection.



Sealing plate, PG



Pg

| Type | Size mm | Dim. D mm | Dim. t mm | Pack. pcs | Weight kg/100 pcs. | Item No. |
|-------------------------|------------|-----------------|-----------------|--------------|-----------------------|------------------|
| 107 V PG 7 PVC | Pg 7 | 11 | 0.5 | 100 | 0,013 | 2029 70 7 |
| 107 V PG 9 PVC | Pg 9 | 13.5 | 0.5 | 100 | 0,020 | 2029 71 5 |
| 107 V PG11 PVC | Pg 11 | 16.5 | 0.5 | 100 | 0,030 | 2029 72 3 |
| 107 V PG13.5 PVC | Pg 13.5 | 18.5 | 0.5 | 100 | 0,038 | 2029 73 1 |
| 107 V PG16 PVC | Pg 16 | 20.5 | 0.5 | 100 | 0,048 | 2029 75 8 |
| 107 V PG21 PVC | Pg 21 | 26 | 0.5 | 100 | 0,075 | 2029 76 6 |
| 107 V PG29 PVC | Pg 29 | 35 | 1 | 100 | 0,135 | 2029 77 4 |

PVC Polyvinylchloride

/100 pcs.

The sealing plate offers both mechanical protection and the maintenance of the protection rating of plastic and metal cable glands to DIN 46320 before cable installation.

Application: the discs are placed between the pressure screw and the pressure ring. If the safe maintenance of IP65 is required, we recommend placing the discs between the pressure ring and the sealing ring. To mount the cable, remove the discs – they can be reused.

