



Luminaire support systems



Luminaire support systems



Luminaire support channel

492



Luminaire support tray

500

Luminaire support channel



| Type | Plate | | Pack. | Weight | Item No. |
|-----------|-------------|-----------------|-------|---------|----------|
| | Width mm | thickness mm | | | |
| LTS 50 FS | 50 | 1.5 | 6 | 140,000 | 6075000 |
| LTS 50 FT | 50 | 1.5 | 6 | 144,100 | 6075005 |

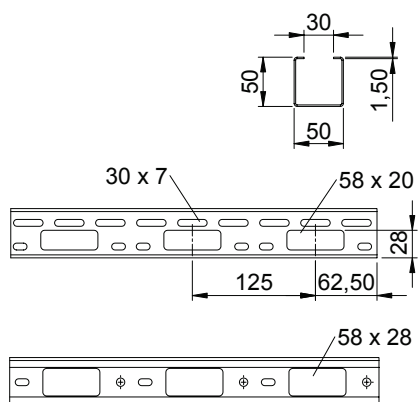
St Steel

FS Strip-galvanised FT Hot-dip galvanised

Perforated luminaire support channel for cable routing and luminaire mounting.
Magnetic shield insulation without cover 20 dB, with cover 50 dB.

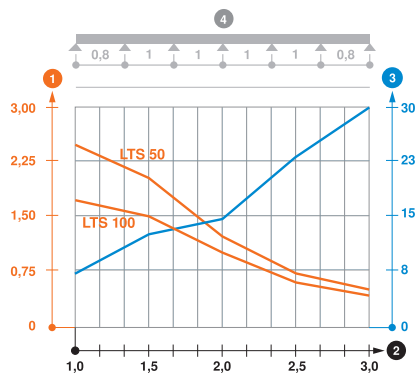
/m

Dimensions



| Type | Length mm | Width mm | Useful cross- section cm ² |
|-----------|--------------|-------------|--|
| LTS 50 FS | 6000 | 50 | 22 |

Load

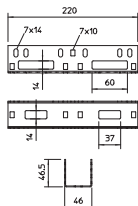


| Type | 1.0 m | 1.5 m | 2.0 m | 2.5 m | 3.0 m |
|-----------|-------|-------|-------|-------|-------|
| | kN/m | kN/m | kN/m | kN/m | kN/m |
| LTS 50 FS | 2.5 | 2 | 1.2 | 0.7 | 0.5 |

Load diagram, luminaire support rail, type LTS

- 1 Permitted cable tray/ladder load in kN/m without man load
- 2 Support width in m
- 3 Rail bend in mm at permitted kN/m
- 4 Load scheme during testing
- Load curve with cable tray/ladder width in mm
- Strut bend curve according to support width

Straight connector



| Type | Pack. | Weight | Item No. |
|--------------|-------|--------|----------|
| | | | |
| VF AZK 50 FS | 25 | 27,100 | 6066615 |
| VF AZK 50 DD | 25 | 27,100 | 6066623 |

St Steel

FS Strip-galvanised DD Strip galvanised zinc/aluminium, Double Dip

An adjustable connector can be created using two straight and angle connectors.
Straight connector for connection of luminaire support channels and AZ channels.

/pc.

Luminaire support channel

| Type | Plate | | Pack. m | Weight kg/100 m | Item No. |
|-------------------|----------|--------------|---------|-----------------|----------------|
| | Width mm | thickness mm | | | |
| LTS 100 FS | 100 | 1.5 | 6 | 177,000 | 6075024 |

St Steel

FS Strip-galvanised

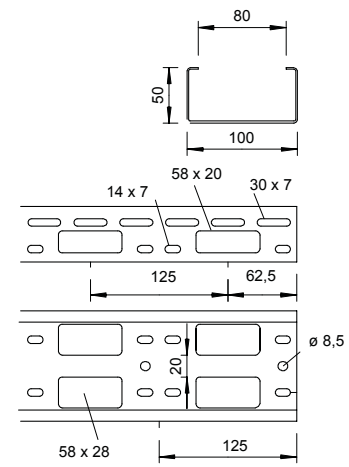
/m

Perforated luminaire support channel for cable routing and luminaire mounting.
Magnetic shield insulation without cover 20 dB, with cover 50 dB.



| Type | Length mm | Width mm | Useful cross-section cm ² |
|------|-----------|----------|--------------------------------------|
| | | | |

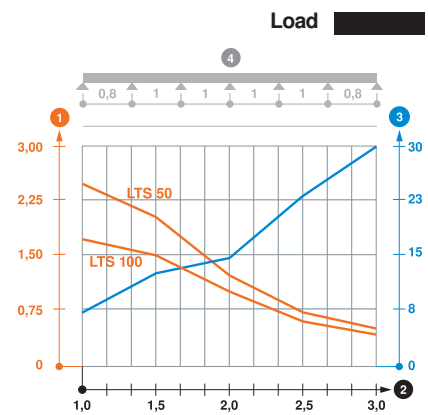
Dimensions



| Type | 1.0 m | 1.5 m | 2.0 m | 2.5 m | 3.0 m |
|-------------------|-------|-------|-------|-------|-------|
| | kN/m | kN/m | kN/m | kN/m | kN/m |
| LTS 100 FS | 1.7 | 1.5 | 1 | 0.6 | 0.4 |

Load diagram, luminaire support rail, type LTS

- 1 Permitted cable tray/ladder load in kN/m without man load
- 2 Support width in m
- 3 Rail bend in mm at permitted kN/m
- 4 Load scheme during testing
- Load curve with cable tray/ladder width in mm
- Strut bend curve according to support width



Cover with turn buckle

| Type | Width mm | Length mm | Pack. m | Weight kg/100 m | Item No. |
|---------------------|----------|-----------|---------|-----------------|----------------|
| | | | | | |
| AZDMD 100 FS | 103 | 3000 | 3 | 96,700 | 6080227 |

St Steel

FS Strip-galvanised

/m

Cover with turn buckle for AZ channel.



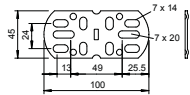
Cover with turn buckle



| Type | Width mm | Length mm | Pack. m | Weight kg/100 m | Item No. |
|--------------|-------------|--------------|------------|--------------------|----------|
| AZDMD 50 DD | 53 | 3000 | 3 | 58,300 | 6080154 |
| AZDMD 100 DD | 103 | 3000 | 3 | 101,700 | 6080235 |

SI Steel /m
DD Strip galvanised zinc/aluminium, Double Dip
 Cover with turn buckle for AZ channel.

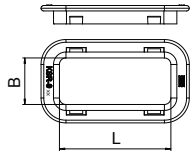
Straight and angle connector



| Type | Pack. pcs | Weight kg/100 pcs. | Item No. |
|-----------|--------------|-----------------------|----------|
| VF AZK FT | 25 | 7,500 | 6066550 |

SI Steel /pc.
FT Hot-dip galvanised
 An adjustable connector can be created using two straight and angle connectors. Scope of delivery including bolts with flange nuts.
 Straight and angle connector for connection of AZ channels.

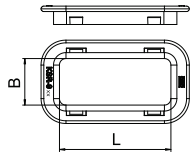
Cable protection ring



| Type | Colour | for perforation mm | Pack. pcs | Weight kg/100 pcs. | Item No. |
|------------|------------|-----------------------|--------------|-----------------------|----------|
| KSR-910 PE | Light grey | 20 x 58 | 25 | 0,470 | 6066712 |

PE Polyethylene /pc.
 Cable protection ring for bottom perforation in cable trays of type IKS and for side perforation in AZ channels and luminaire support channel.

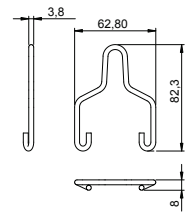
Cable protection ring



| Type | Colour | for perforation mm | Pack. pcs | Weight kg/100 pcs. | Item No. |
|------------|------------|-----------------------|--------------|-----------------------|----------|
| KSR-915 PE | Light grey | 28 x 58 | 25 | 0,520 | 6066704 |

PE Polyethylene /pc.
 Cable protection ring for bottom perforations in AZ channels and luminaire support channels.

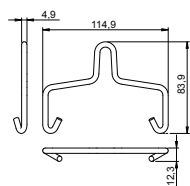
Suspension bracket



| Type | F in kN kN | Pack. pcs | Weight kg/100 pcs. | Item No. |
|--------------|---------------|--------------|-----------------------|----------|
| AHB 50 D4 FT | 0.35 | 50 | 1,985 | 6066505 |

SI Steel /100 pc.
F Hot-dip galvanised
 Suspension bracket for chain or steel wire tensioning rope fastening of the luminaire support rail, type LTS 50, and the AZ small duct, type AZK 50.

Suspension bracket



| Type | F in kN kN | Pack. pcs | Weight kg/100 pcs. | Item No. |
|---------------|---------------|--------------|-----------------------|----------|
| AHB 100 D5 FT | 0.6 | 50 | 4,060 | 6066510 |

SI Steel /100 pc.
F Hot-dip galvanised
 Suspension bracket for chain or steel wire tensioning rope fastening of the luminaire support rail, type LTS 100, and the AZ small duct, type AZK 100.

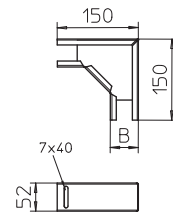
| Type | Side height mm | Width mm | Pack. pcs | Weight kg/100 pcs. | Item No. |
|-----------------|-------------------|-------------|--------------|-----------------------|----------------|
| LTS B DD | 50 | 50 | 1 | 35,700 | 6074901 |

St Steel

DD Strip galvanised zinc/aluminium, Double Dip

90° bend, horizontal, for AZ channel AZK 050 and luminaire support channel LTS 50.

90° bend



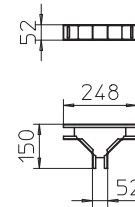
| Type | Side height mm | Width mm | Pack. pcs | Weight kg/100 pcs. | Item No. |
|-----------------|-------------------|-------------|--------------|-----------------------|----------------|
| LTS T DD | 50 | 50 | 1 | 46,500 | 6074912 |

St Steel

DD Strip galvanised zinc/aluminium, Double Dip

Horizontal tee, for AZ channel AZK 050 and luminaire support channel LTS 50.

Tee



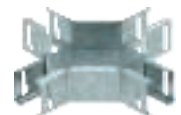
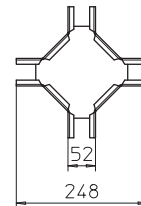
| Type | Side height mm | Width mm | Pack. pcs | Weight kg/100 pcs. | Item No. |
|-----------------|-------------------|-------------|--------------|-----------------------|----------------|
| LTS K DD | 50 | 50 | 1 | 57,000 | 6074921 |

St Steel

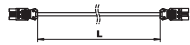
DD Strip galvanised zinc/aluminium, Double Dip

Cross-over, horizontal, for AZ channel AZK 050 and luminaire support channel LTS 50.

Cross-over



Connection cable 3 x 1.5 mm²

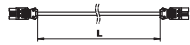


| Type | Cable length mm | Cross-section mm ² | Number of poles | Colour | Pack. pcs | Weight kg/100 pcs. | Item No. |
|----------------|-----------------|-------------------------------|-----------------|--------|-----------|--------------------|----------|
| VL-3Q1.5 3 SW | 3000 | 1.5 | 3 | Black | 1 | 42,000 | 6108102 |
| VL-3Q1.5 5 SW | 5000 | 1.5 | 3 | Black | 1 | 70,000 | 6108104 |
| VL-3Q1.5 10 SW | 10000 | 1.5 | 3 | Black | 1 | 140,000 | 6108109 |

/pc.

Connection cable 3 x 1.5 mm² in the version socket – connector with GST18i connection system.

Connection cable 3 x 2.5 mm²

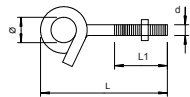


| Type | Cable length mm | Cross-section mm ² | Number of poles | Colour | Pack. pcs | Weight kg/100 pcs. | Item No. |
|----------------|-----------------|-------------------------------|-----------------|--------|-----------|--------------------|----------|
| VL-3Q2.5 3 SW | 3000 | 2.5 | 3 | Black | 1 | 54,000 | 6108152 |
| VL-3Q2.5 5 SW | 5000 | 2.5 | 3 | Black | 1 | 90,000 | 6108154 |
| VL-3Q2.5 10 SW | 10000 | 2.5 | 3 | Black | 1 | 180,000 | 6108159 |

/pc.

Connection cable 3 x 2.5 mm² in the version socket – connector with GST18i connection system.

Ceiling hook



| Type | Thread | Dim. d mm | Dim. L mm | Dimen- sion L1 mm | Dimen- sion d Ø mm | Breaking load kN | Pack. pcs | Weight kg/100 pcs. | Item No. |
|---------|--------|-----------|-----------|-------------------|--------------------|------------------|-----------|--------------------|----------|
| 948 TG6 | M6 | 6 | 70 | 46 | 13 | 1 | 25 | 5,000 | 3453820 |

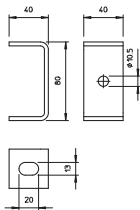
St Steel

G Electrogalvanised

/100 pc.

Tightly wound ceiling hook. Including two large washers and nuts.

Ceiling bracket



| Type | Pack. pcs | Weight kg/100 pcs. | Item No. |
|-------|-----------|--------------------|----------|
| DB FT | 20 | 16,000 | 6356109 |

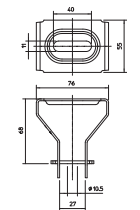
St Steel

FT Hot-dip galvanised

/pc.

Ceiling bracket for threaded rod suspension.

Ceiling bracket, variable



| Type | Pack. pcs | Weight kg/100 pcs. | Item No. |
|--------|-----------|--------------------|----------|
| DBV FS | 20 | 18,200 | 6356055 |

St Steel

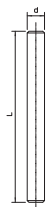
FS Strip-galvanised

/pc.

The locked threaded rod seat offers the option of infinite angle adjustment.

Ceiling bracket for suspension with threaded rods. The variable adjustment permits universal use.

Threaded rod



| Type | Thread | Dim. d mm | Dim. L mm | Pack. pcs | Weight kg/100 pcs. | Item No. |
|---------------|--------|-----------|-----------|-----------|--------------------|----------|
| 2078 M8 1M G | M8 | 8 | 1000 | 10 | 30,000 | 3141128 |
| 2078 M10 1M G | M10 | 10 | 1000 | 10 | 49,000 | 3141209 |
| 2078 M12 1M G | M12 | 12 | 1000 | 10 | 62,000 | 3141306 |
| 2078 M8 2M G | M8 | 8 | 2000 | 10 | 60,000 | 3141136 |
| 2078 M10 2M G | M10 | 10 | 2000 | 10 | 98,000 | 3141140 |
| 2078 M12 2M G | M12 | 12 | 2000 | 10 | 140,000 | 3141144 |

St Steel

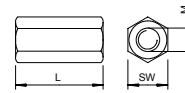
G Electrogalvanised

/100 pc.

Threaded rod to DIN 976.

Connection sleeve

| Type | Thread | Dim. | | Pack. pcs | Weight kg/100 pcs. | Item No. |
|--------------------|--------|------|-------|-----------|--------------------|----------------|
| | | L mm | SW mm | | | |
| 12005 M8 G | M8 | 30 | 13 | 50 | 2,000 | 6410081 |
| 12005 M10 G | M10 | 40 | 17 | 50 | 6,000 | 6410103 |
| 12005 M12 G | M12 | 40 | 19 | 25 | 7,000 | 6410111 |

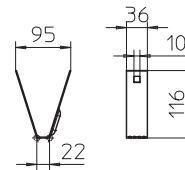


St Steel /100 pc.
G Electrogalvanised

Connection sleeve with continuous internal thread.

Ceiling bracket, trapezoidal

| Type | Material thickness mm | F in kN | Pack. pcs | Weight kg/100 pcs. | Item No. |
|------|-----------------------|---------|-----------|--------------------|----------|
| | | | | | |

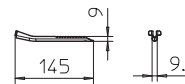


St Steel /pc.
FS Strip-galvanised

Important: Observe the statics of the trapezoidal metal ceiling.
 Ceiling bracket for fastening to standard trapezoidal ceilings.

Splint for trapezoidal ceiling bracket

| Type | Material thickness mm | Breaking load kN | Pack. pcs | Weight kg/100 pcs. | Item No. |
|------|-----------------------|------------------|-----------|--------------------|----------|
| | | | | | |

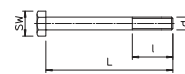


St Steel /pc.
FS Strip-galvanised

Important: Observe the statics of the trapezoidal metal ceiling.
 Splint for fastening and securing the ceiling bracket to trapezoidal ceilings.

Hexagonal bolt

| Type | Dimension mm | Dim. | | | | Pack. pcs | Weight kg/100 pcs. | Item No. |
|---------------------|--------------|------|------|------|-------|-----------|--------------------|----------------|
| | | L mm | l mm | d mm | SW mm | | | |
| SKS 10X110 G | M10 x 110 | 110 | 30 | 10 | 17 | 20 | 9,500 | 6418244 |



St Steel /100 pc.
G Electrogalvanised

Hexagonal bolt with washers and hexagonal nut.

Suspension chain

| Type | Material thickness mm | Pack. m | Weight kg/100 m | Item No. |
|-------------------|-----------------------|---------|-----------------|----------------|
| | | | | |
| LTK-K 25 G | 2.6 | 25 | 19,000 | 6050370 |



St Steel /m
G Electrogalvanised

Chain according to DIN 5686 for suspending luminaire support systems.

Quick link

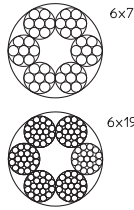
| Type | Material thickness mm | Pack. pcs | Weight kg/100 pcs. | Item No. |
|------|-----------------------|-----------|--------------------|----------|
| | | | | |



St Steel /100 pc.
G Electrogalvanised

Quick link for connecting the chain, type LTK.

Steel wire tensioning rope

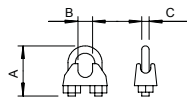


| Type | Cable diameter mm | Breaking load kN | In rings m | Weight | | Item No. |
|----------------------------|-------------------|------------------|------------|----------|-------------|----------------|
| | | | | kg/100 m | price/100 m | |
| 957 3 G | 3 | 5.29 | 50 | 3,220 | | 5303206 |
| Sl Steel | | | | | | |
| G Electrogalvanised | | | | | | |

Steel wire tensioning rope, galvanised with fibre inlay (hemp core).
 Cable Ø 2 - 6 mm: round-stranded cable 6 x 7 according to DIN 3055.
 Cable Ø 8 - 10 mm: round-stranded cable 6 x 19 according to DIN 3060.
 Minimum break force 1770 N/mm².

Application for interior areas!

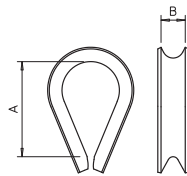
Wire rope clamp



| Type | For rope-Ø mm | Dimen- sion A mm | Dimen- sion B mm | Dimen- sion C mm | Pack. pcs | Weight | | Item No. |
|-----------------------------|---------------|------------------|------------------|------------------|-----------|-------------|----------------|----------------|
| | | | | | | kg/100 pcs. | price/100 pcs. | |
| 947 3 F | 3 | 20 | 4 | 4 | 25 | 1,061 | | 5302021 |
| TG Cast iron | | | | | | | | |
| F Hot-dip galvanised | | | | | | | | |

Wire cable clamp for fastening steel wire tensioning cables.
 ## Application for interior areas! ##

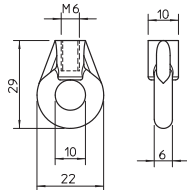
Rope thimble



| Type | For rope-Ø mm | Dimen- sion A mm | Dimen- sion B mm | Pack. pcs | Weight | | Item No. |
|----------------------------|---------------|------------------|------------------|-----------|-------------|----------------|----------------|
| | | | | | kg/100 pcs. | price/100 pcs. | |
| 946 3 G | 3 | 21.5 | 4 | 25 | 0,345 | | 5301033 |
| Sl Steel | | | | | | | |
| G Electrogalvanised | | | | | | | |

Cable eye stiffener according to DIN 65457.
 ## Application for interior areas! ##

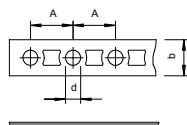
Ring eyelet



| Type | Thread | Dim. D mm | Dimen- sion d mm | Dim. L mm | Pack. pcs | Weight | | Item No. |
|----------------------------|--------|-----------|------------------|-----------|-----------|-------------|----------------|----------------|
| | | | | | | kg/100 pcs. | price/100 pcs. | |
| 2084 K M6 | M6 | 22 | 10 | 29 | 100 | 1,500 | | 3463060 |
| Zn Die-cast zinc | | | | | | | | |
| G Electrogalvanised | | | | | | | | |

Ring eyelet with metric internal thread.

Perforated steel strap



| Type | Dimension mm | Dim. d mm | Dimen- sion A mm | per roll m | Pack. pcs | Weight | | Item No. |
|----------------------------|--------------|-----------|------------------|------------|-----------|-------------|----------------|----------------|
| | | | | | | kg/100 pcs. | price/100 pcs. | |
| 5055 II12 FS | 12 x 1 | 5.2 | 14.4 | 10 | 1 | 73,000 | | 1470124 |
| 5055 II17 FS | 17 x 1 | 6.5 | 20 | 10 | 1 | 106,000 | | 1470175 |
| 5055 III26 FS | 26 x 1.2 | 8.5 | 25 | 10 | 1 | 204,500 | | 1470264 |
| 5055 LI12 FS | 12 x 0.75 | 5.2 | 14.4 | 10 | 1 | 59,000 | | 1471120 |
| 5055 LI17 FS | 17 x 0.75 | 6.5 | 20 | 10 | 1 | 84,200 | | 1471171 |
| 5055 LIII26 FS | 26 x 1 | 8.5 | 25 | 10 | 1 | 172,300 | | 1471260 |
| Sl Steel | | | | | | | | |
| FS Strip-galvanised | | | | | | | | |

Perforated steel strap, in practical uncoiling box.

TS suspension eyelet

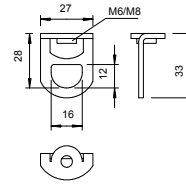
| Type | Thread | Breaking load kN | Shipping box pcs | Pack. pcs | Weight kg/100 pcs. | Item No. |
|------------------|--------|------------------|------------------|-----------|--------------------|----------------|
| 2990 M6 G | M6 | 3.5 | 500 | 50 | 2,320 | 3462862 |
| 2990 M8 G | M8 | 3.5 | 500 | 50 | 2,320 | 3462889 |

St Steel

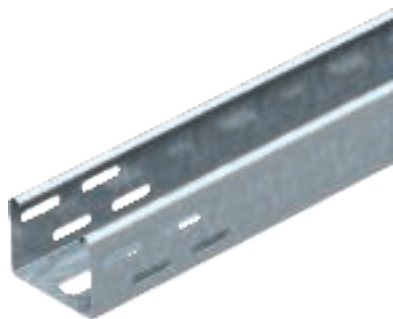
G Electrogalvanised

Suspension eyelet with interior thread.

/100 pcs.



Luminaire support tray



| Type | Plate | | Colour | Pack. m | Weight kg/100 m | Item No. |
|-------------|----------|--------------|------------|---------|-----------------|----------|
| | Width mm | thickness mm | | | | |
| LTR 3000 FS | 75 | 0.75 | — | 3 | 125,700 | 6055810 |
| LTR 6000 FS | 75 | 0.75 | — | 6 | 125,700 | 6055812 |
| LTR FSK RW | 75 | 0.75 | Pure white | 6 | 129,540 | 6055820 |

St Steel /m

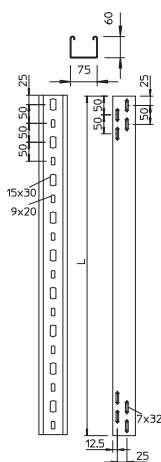
FS Strip-galvanised PE50 PES50 - Polyester / epoxy

The white version is a visible surface coating.

Luminaire support tray with perforated base for fastening luminaires and cable penetration.

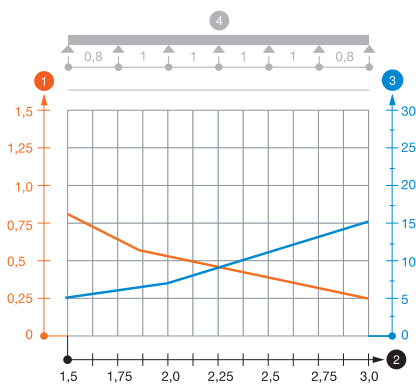
Magnetic shield insulation without cover 20 dB, with cover 50 dB.

Dimensions



| Type | Length mm | Width mm | Useful cross-section cm ² |
|-------------|-----------|----------|--------------------------------------|
| LTR 3000 FS | 3000 | 75 | 42 |
| LTR 6000 FS | 6000 | 75 | 42 |

Load

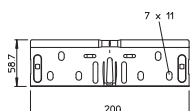


| Type | 1.5 m kN/m | 2.0 m kN/m | 2.5 m kN/m | 3.0 m kN/m |
|-------------|------------|------------|------------|------------|
| LTR 3000 FS | 0.8 | 0.55 | 0.35 | 0.25 |
| LTR 6000 FS | 0.8 | 0.55 | 0.35 | 0.25 |

Load diagram, luminaire support tray, type LTR

- Support width in m
- 1 Permitted cable tray/ladder load in kN/m without man load
- Rail bend in mm at permitted kN/m
- 2 Support width in m
- Max. possible cable load at greatest possible width
- 3 Rail bend in mm at permitted kN/m
- Permitted cable tray/ladder load in kN/m without man load
- 4 Load scheme during testing
- Cable tray/ladder width in mm
- Load curve with cable tray/ladder width in mm
- Strut bend curve according to support width

Straight connector set



| Type | Side height mm | Width mm | Pack. pcs | Weight kg/100 pcs. | Item No. |
|------|----------------|----------|-----------|--------------------|----------|
| | | | | | |

St Steel /pc.

FS Strip-galvanised

The continuous earthing connection is guaranteed without a screw connection.

Quick connector set for straight, screwless connections of cable trays and fittings with a side height of 60 mm.

Central suspension

| Type | For width mm | For threaded rod | Pack. pcs | Weight kg/100 pcs. | Item No. |
|-------------------|--------------|------------------|-----------|--------------------|----------------|
| MAH LTR FS | 75 | M10 | 25 | 12,000 | 6358810 |

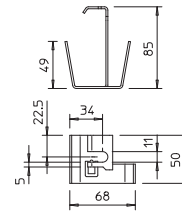
St Steel

FS Strip-galvanised

/pc.

The central hanger can be used with all cable trays of width 75 mm and side height 60 mm.

Central hanger for luminaire support tray, type LTR, for threaded rod and chain suspension.



Cover with turn buckle

| Type | Width mm | Plate thickness mm | Length mm | Pack. m | Weight kg/100 m | Item No. |
|-------------------|----------|--------------------|-----------|---------|-----------------|----------------|
| DRL 075 FS | 75 | 0.75 | 3000 | 3 | 82,330 | 6052029 |

St Steel

FS Strip-galvanised

/m

Transverse bead from 500 mm width.

Cover for cable trays and cable ladders with three pairs of turn buckles.

When using covers outdoors, additional measures against the influence of wind must be taken. Cover clamps or turn buckles on their own are not sufficient securing elements against wind loads.

