


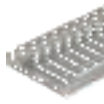




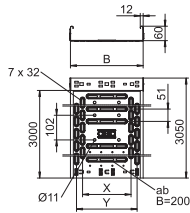
**Function maintenance
Cable-specific
support structures**

05 BSS Masterkatalog Lander / en / 25/07/2016 (LLExpert_04359) / 25/07/2016

Function maintenance: cable-specific support structures

	Cable tray RKS-Magic®	294
	Mesh cable tray GR-Magic®	296
	Mounting systems	298
	Cable tray RKS-Magic® VA	306
	Mesh cable tray GR-Magic® VA	308
	Mounting systems, VA	309

Cable tray RKS-Magic®



Type	Plate		Pack.	Weight	Item No.
	Width mm	thickness mm			
RKSM 610 FS	100	0.75	3	132,131	6047 61 1
RKSM 620 FS	200	0.75	3	183,000	6047 63 8
RKSM 630 FS	300	0.75	3	235,080	6047 65 4
RKSM 640 FS	400	0.9	3	325,900	6047 68 9
RKSM 610 FT	100	0.75	3	172,460	6047 61 2
RKSM 620 FT	200	0.75	3	241,640	6047 63 9
RKSM 630 FT	300	0.75	3	311,800	6047 65 5
RKSM 640 FT	400	0.9	3	426,340	6047 69 0

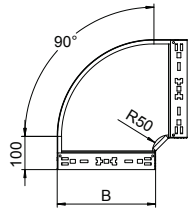
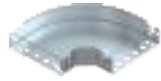
St Steel

FS Strip-galvanised FT Hot-dip galvanised

/m

RKSM 60 = efficient magic cable tray system with 60 mm side height.

90° bend



Type	Width mm	Pack. pcs	Weight kg/100 pcs.	Item No.
RBM 90 620 FS	200	1	122,100	6041 13 4
RBM 90 630 FS	300	1	192,800	6041 13 6
RBM 90 640 FS	400	1	275,400	6041 13 8
RBM 90 610 FT	100	1	70,500	6041 15 0
RBM 90 620 FT	200	1	130,900	6041 15 4
RBM 90 630 FT	300	1	206,800	6041 15 6
RBM 90 640 FT	400	1	295,300	6041 15 8

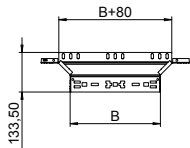
St Steel

FS Strip-galvanised FT Hot-dip galvanised

/pc.

90° bend with quick connector system. For all cable tray types of 60 mm side height.

Mounting/branch piece



Type	Width mm	Pack. pcs	Weight kg/100 pcs.	Item No.
RAAM 620 FS	200	1	50,600	6041 23 4
RAAM 630 FS	300	1	63,500	6041 23 6
RAAM 640 FS	400	1	76,500	6041 23 8
RAAM 610 FT	100	1	40,600	6041 25 0
RAAM 620 FT	200	1	54,300	6041 25 4
RAAM 630 FT	300	1	68,100	6041 25 7
RAAM 640 FT	400	1	82,000	6041 25 9

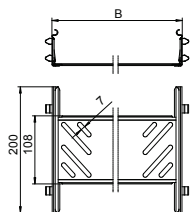
St Steel

FS Strip-galvanised FT Hot-dip galvanised

/pc.

Mounting/branch piece with quick connector system. For all cable tray types of 60 mm side height.

Connector



Type	Side height mm	Width mm	Pack. pcs	Weight kg/100 pcs.	Item No.
KTSMV 620 FS	60	200	1	37,200	6068 91 8
KTSMV 630 FS	60	300	1	44,000	6068 92 0
KTSMV 640 FS	60	400	1	50,700	6068 92 2
KTSMV 610 DD	60	100	1	30,500	6068 93 6
KTSMV 620 DD	60	200	1	37,200	6068 94 0
KTSMV 630 DD	60	300	1	44,000	6068 94 2
KTSMV 640 DD	60	400	1	50,700	6068 94 4

St Steel

FS Strip-galvanised DD Strip galvanised zinc/aluminium, Double Dip

/pc.

Cable tray connector with quick fastening for the screwless connection of perforated cable trays with a side height of 60 mm.

Floor end plate

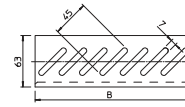
Type	Width mm	Pack. pcs	Weight kg/100 pcs.	Item No.
BEB 100 FS	100	100	5,400	7083 10 6
BEB 200 FS	200	100	11,400	7083 20 3
BEB 300 FS	300	100	17,200	7083 30 0
BEB 400 FS	400	100	23,100	7083 40 8
BEB 100 DD	100	100	5,400	7083 61 8
BEB 200 DD	200	100	11,400	7083 62 6
BEB 300 DD	300	100	17,200	7083 63 0
BEB 400 DD	400	100	23,100	7083 63 4

St Steel

/pc.

FS Strip-galvanised DD Strip galvanised zinc/aluminium, Double Dip

Floor end plate for floor reinforcement at the ends of the cable tray and as cable protection.



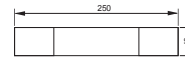
Identification plate for cable system

Type	Language	Pack. pcs	Weight kg/100 pcs.	Item No.
KS-E DE	German	10	0,600	7205 42 3
KS-E EN	English	10	0,600	7205 43 2
KS-E HU	Hungarian	10	0,600	7205 43 4
KS-E PL	Polish	10	0,600	7205 43 6
KS-E FI	Finnish	10	0,600	7205 43 7
KS-E SE	Swedish	10	0,600	7205 42 4

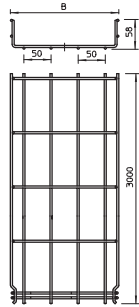
PVC Polyvinylchloride

/pc.

Self-adhesive identification plate for approved cable system labelling for function maintenance as required by DIN 4102 Part 12.



Mesh cable tray GR-Magic®, electrogalvanised

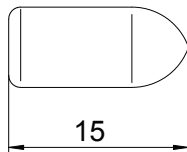


Type	Wire			Weight kg/100 m	Item No.
	Width mm	Ø mm	Length mm		
GRM 55 200 4.8 G	200	4.8	3000	151,000	6001 44 7
GRM 55 300 G	300	4.8	3000	194,900	6001 44 8
GRM 55 400 G	400	4.8	3000	236,700	6001 45 0

■ St Steel /m
■ G Electrogalvanised

Mesh cable tray with shaped connector of side height 55 mm.

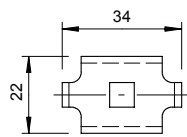
Protective cap for mesh cable tray



Type	Colour	Pack.	Weight	Item No.
		pcs	kg/100 pcs.	
GR KS 4.8 OR	Pastel orange	500	0,030	6003 75 4

■ PE Polyethylene /100 pc.
 Protective cap to cover cut wire ends of mesh cable trays.

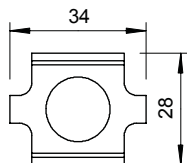
Clamping piece



Type	Colour	Pack.	Weight	Item No.
		pcs	kg/100 pcs.	
GKS 34 G		20	2,000	6016 85 5

■ St Steel /pc.
■ G Electrogalvanised
 Clamp for fixing mesh cable trays to wall or support brackets.

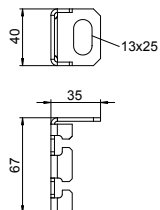
Connector



Type	Colour	Pack.	Weight	Item No.
		pcs	kg/100 pcs.	
GSV 34 G		20	3,000	6016 59 6

■ St Steel /pc.
■ G Electrogalvanised
 Screwed version of joint connector for mesh cable trays.

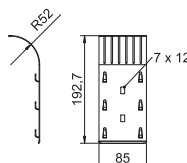
Connection component



Type	Colour	Pack.	Weight	Item No.
		pcs	kg/100 pcs.	
ABG FT		20	0,850	6015 34 5

■ St Steel /pc.
■ FT Hot-dip galvanised
 Seat for threaded rod on mesh cable tray.

Cable exit plate

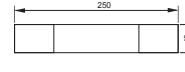


Type	Colour	Pack.	Weight	Item No.
		pcs	kg/100 pcs.	
KAB GR FS		10	14,100	6220 13 9

■ St Steel /pc.
■ FS Strip-galvanised
 Cable exit plate for mesh cable trays.

Identification plate for cable system

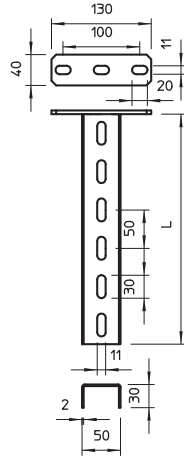
Type	Language	Pack.	Weight	Item No.
		pcs	kg/100 pcs.	
KS-E DE	German	10	0,600	7205 42 3
KS-E EN	English	10	0,600	7205 43 2
KS-E HU	Hungarian	10	0,600	7205 43 4
KS-E PL	Polish	10	0,600	7205 43 6
KS-E FI	Finnish	10	0,600	7205 43 7
KS-E SE	Swedish	10	0,600	7205 42 4



PVC Polyvinylchloride /pc.

Self-adhesive identification plate for approved cable system labelling for function maintenance as required by DIN 4102 Part 12.

US 3 suspended support



Type	Length mm	Material thickness mm	Pack. pcs	Weight kg/100 pcs.	Item No.
US 3 K 20 FT	200	2	1	50,500	6342 35 1
US 3 K 30 FT	300	2	1	64,400	6342 35 3
US 3 K 40 FT	400	2	1	78,300	6342 35 5
US 3 K 50 FT	500	2	1	92,300	6342 35 7
US 3 K 60 FT	600	2	1	106,200	6342 35 9
US 3 K 70 FT	700	2	1	120,200	6342 36 2
US 3 K 80 FT	800	2	1	134,100	6342 36 4
US 3 K 90 FT	900	2	1	147,800	6342 36 6
US 3 K 100 FT	1000	2	1	162,000	6342 36 8
US 3 K 110 FT	1100	2	1	175,900	6342 37 0
US 3 K 120 FT	1200	2	1	189,900	6342 37 2

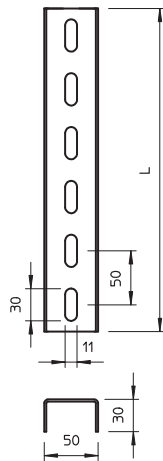
SI Steel

FT Hot-dip galvanised

/pc.

Suspended support (U profile) of dimensions 50 x 30 mm with welded head plate.

US 3 support



Type	Length mm	Material thickness mm	Pack. pcs	Weight kg/100 pcs.	Item No.
US 3 20 FS	200	2	1	27,000	6342 30 2
US 3 30 FS	300	2	1	40,000	6342 30 4
US 3 40 FS	400	2	1	53,000	6342 30 6
US 3 50 FS	500	2	1	67,000	6342 30 8
US 3 60 FS	600	2	1	80,000	6342 31 0
US 3 70 FS	700	2	1	93,000	6342 31 2
US 3 80 FS	800	2	1	107,000	6342 31 4
US 3 90 FS	900	2	1	120,000	6342 31 6
US 3 100 FS	1000	2	1	133,000	6342 31 8

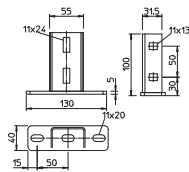
SI Steel

FS Strip-galvanised

/pc.

U support in fixed lengths. Dimensions 30 x 50 mm.

Head plate for US 3 support



Type	Pack. pcs	Weight kg/100 pcs.	Item No.
KU 3 FT	10	46,800	6348 87 4

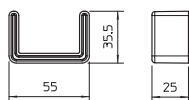
SI Steel

FT Hot-dip galvanised

/pc.

Head plate for mounting on US 3 supports.

Protective cap for US 3 support



Type	Colour	Pack. pcs	Weight kg/100 pcs.	Item No.
US 3 KS OR	Pastel orange	20	1,070	6338 45 8

PE Polyethylene

/pc.

Protective cap to cover the ends of US 3 supports.

US 5 suspended support

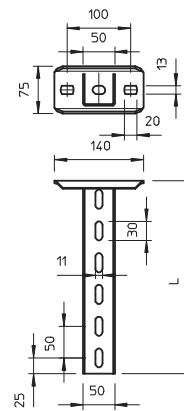
Type	Length mm	Material thickness mm	Pack. pcs	Weight kg/100 pcs.	Item No.
US 5 K 20 FT	200	2.5	1	85,000	6341 52 7
US 5 K 30 FT	300	2.5	1	110,000	6341 53 5
US 5 K 40 FT	400	2.5	1	136,000	6341 54 3
US 5 K 50 FT	500	2.5	1	161,000	6341 55 1
US 5 K 60 FT	600	2.5	1	185,000	6341 57 8
US 5 K 70 FT	700	2.5	1	210,000	6341 58 6
US 5 K 80 FT	800	2.5	1	236,000	6341 59 4
US 5 K 90 FT	900	2.5	1	261,000	6341 60 8
US 5 K 100 FT	1000	2.5	1	286,000	6341 61 6
US 5 K 110 FT	1100	2.5	1	311,000	6341 62 4
US 5 K 120 FT	1200	2.5	1	337,000	6341 63 2

St Steel

FT Hot-dip galvanised

/pc.

U support of dimensions 50 x 50 mm with welded head plate.



US 5 support

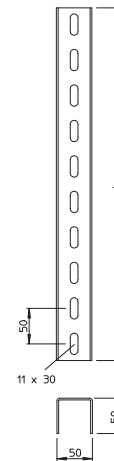
Type	Length mm	Material thickness mm	Pack. pcs	Weight kg/100 pcs.	Item No.
US 5 20 FT	200	2.5	1	51,000	6340 88 1
US 5 30 FT	300	2.5	1	79,000	6340 90 3
US 5 40 FT	400	2.5	1	106,000	6340 91 1
US 5 50 FT	500	2.5	1	133,000	6340 93 8
US 5 60 FT	600	2.5	1	160,000	6340 94 6
US 5 70 FT	700	2.5	1	175,000	6340 95 0
US 5 80 FT	800	2.5	1	200,000	6340 95 4
US 5 90 FT	900	2.5	1	227,000	6340 95 8
US 5 100 FT	1000	2.5	1	265,000	6340 96 2
US 5 150 FT	1500	2.5	1	395,000	6340 96 6
US 5 200 FT	2000	2.5	1	506,000	6340 97 0

St Steel

FT Hot-dip galvanised

/pc.

U support in fixed lengths. Dimensions 50 x 50 mm.



Head plate for US 5 support

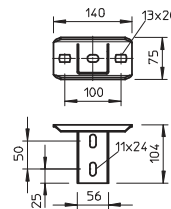
Type	Pack. pcs	Weight kg/100 pcs.	Item No.
KUS 5 FT	10	75,000	6348 90 4

St Steel

FT Hot-dip galvanised

/pc.

Head plate for installation in US 5 support.



Head plate for US 5 support, variable

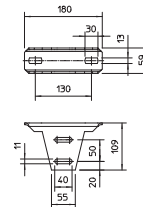
Type	Pack. pcs	Weight kg/100 pcs.	Item No.
KU 5 V FT	4	82,000	6348 92 0

St Steel

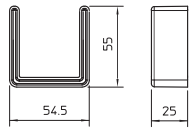
FT Hot-dip galvanised

/pc.

Variable head plate for mounting on US 5 support.



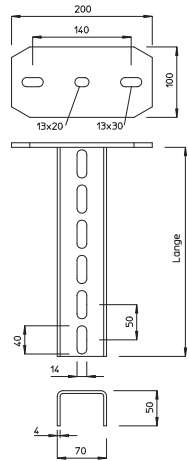
Protective cap for US 5 support



Type	Colour	Pack. pcs	Weight kg/100 pcs.	Item No.
US 5 KS OR	Pastel orange	20	1,300	6338 46 2
PE Polyethylene /pc.				

Protective cap for end covering of US 5 supports.

US 7 suspended support

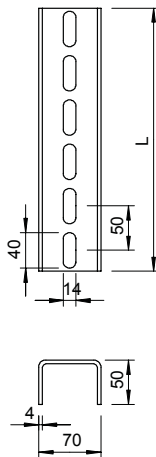


Type	Length mm	Material thickness mm	Pack. pcs	Weight kg/100 pcs.	Item No.
US 7 K 20 FT	200	4	1	176,000	6339 01 8
US 7 K 30 FT	300	4	1	216,000	6339 03 4
US 7 K 40 FT	400	4	1	257,000	6339 05 0
US 7 K 50 FT	500	4	1	297,000	6339 07 7
US 7 K 60 FT	600	4	1	337,000	6339 09 3
US 7 K 70 FT	700	4	1	378,000	6339 11 5
US 7 K 80 FT	800	4	1	418,000	6339 13 1
US 7 K 90 FT	900	4	1	458,000	6339 16 6
US 7 K 100 FT	1000	4	1	499,000	6339 18 2
US 7 K 110 FT	1100	4	1	539,000	6339 19 0
US 7 K 120 FT	1200	4	1	579,000	6339 20 4
US 7 K 130 FT	1300	4	1	620,000	6339 21 2
US 7 K 140 FT	1400	4	1	660,000	6339 22 0
US 7 K 150 FT	1500	4	1	701,000	6339 23 9
US 7 K 160 FT	1600	4	1	741,000	6339 24 7
US 7 K 170 FT	1700	4	1	781,000	6339 25 5
US 7 K 180 FT	1800	4	1	822,000	6339 26 3
US 7 K 190 FT	1900	4	1	862,000	6339 27 1
US 7 K 200 FT	2000	4	1	902,000	6339 29 8

St Steel /pc.
FT Hot-dip galvanised

Suspended support (U profile) of dimensions 70 x 50 mm with welded head plate.

US 7 support



Type	Length mm	Material thickness mm	Pack. pcs	Weight kg/100 pcs.	Item No.
US 7 20 FT	200	4	1	81,000	6340 01 6
US 7 30 FT	300	4	1	121,000	6340 03 2
US 7 40 FT	400	4	1	161,000	6340 05 9
US 7 50 FT	500	4	1	202,000	6340 07 5
US 7 60 FT	600	4	1	242,000	6340 09 1
US 7 70 FT	700	4	1	283,000	6340 11 3
US 7 80 FT	800	4	1	323,000	6340 14 8
US 7 90 FT	900	4	1	363,000	6340 16 4
US 7 100 FT	1000	4	1	404,000	6340 18 0
US 7 110 FT	1100	4	1	444,000	6340 19 9
US 7 120 FT	1200	4	1	484,000	6340 20 2
US 7 130 FT	1300	4	1	525,000	6340 21 0
US 7 140 FT	1400	4	1	565,000	6340 22 9
US 7 150 FT	1500	4	1	606,000	6340 23 7
US 7 160 FT	1600	4	1	646,000	6340 24 5
US 7 170 FT	1700	4	1	686,000	6340 25 3
US 7 180 FT	1800	4	1	727,000	6340 26 1
US 7 190 FT	1900	4	1	767,000	6340 28 8
US 7 200 FT	2000	4	1	807,000	6340 29 6

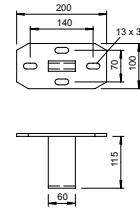
St Steel /pc.
FT Hot-dip galvanised

U support in fixed lengths. Dimensions 70 x 50 mm.

Head plate for US 7 support

Type	Pack. pcs	Weight kg/100 pcs.	Item No.
KU 7 FT	10	148,000	6349 10 2
St Steel			/pc.
FT Hot-dip galvanised			

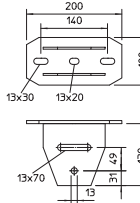
Light-duty head plate for mounting on US 7 support.



Head plate for US 7 support, variable

Type	Pack. pcs	Weight kg/100 pcs.	Item No.
KU 7 VQP FT	10	180,000	6349 15 3
St Steel			/pc.
FT Hot-dip galvanised			

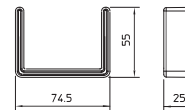
Variable head plate for installation on US 7 support.



Protective cap for US 7 support

Type	Colour	Pack. pcs	Weight kg/100 pcs.	Item No.
US 7 KS OR	Pastel orange	20	1,800	6338 49 7
PE Polyethylene				/pc.

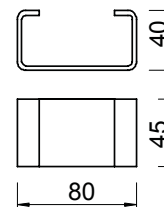
Protective cap to cover the ends of US 7 supports.



Spacer DSK 45

Type	Pack. pcs	Weight kg/100 pcs.	Item No.
DSK 45 FT	20	19,000	6416 50 0
St Steel			/pc.
FT Hot-dip galvanised			

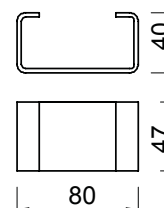
Spacer for use in US 5 support and in the head plate, type KU 7 VQP.



Spacer DSK 47

Type	Pack. pcs	Weight kg/100 pcs.	Item No.
DSK 47 FT	20	16,000	6416 50 4
St Steel			/pc.
FT Hot-dip galvanised			

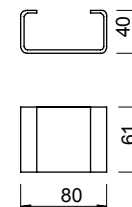
Spacer for use in head plate, type KU 5 V.



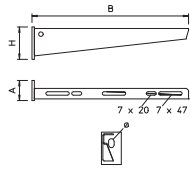
Spacer DSK 61

Type	Pack. pcs	Weight kg/100 pcs.	Item No.
DSK 61 FT	20	26,000	6416 51 9
St Steel			/pc.
FT Hot-dip galvanised			

Spacer for use in US 7 supports.



Wall and support bracket AW 15



Type	Width mm	Dim. H mm	Dimen- sion A mm	Hole- Ø mm	Pack. pcs	Weight kg/100 pcs.	Item No.
AW 15 21 FT	210	60	40	11	30	26,000	6420 68 0
AW 15 31 FT	310	65	40	11	30	32,500	6420 71 0
AW 15 41 FT	410	70	40	11	30	55,000	6420 74 5

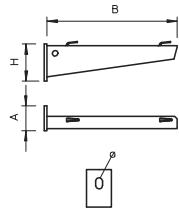
St Steel

FT Hot-dip galvanised

/pc.

Light-duty wall and support bracket with welded head plate.

Wall and support bracket AWG 15



Type	Width mm	Dim. H mm	Dimen- sion A mm	Hole- Ø mm	Pack. pcs	Weight kg/100 pcs.	Item No.
AW G 15 21 FT	210	60	40	11	30	26,000	6420 60 8
AW G 15 31 FT	310	65	40	11	30	35,000	6420 61 0
AW G 15 41 FT	410	70	40	11	30	56,000	6420 61 2

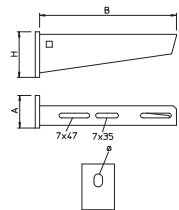
St Steel

FT Hot-dip galvanised

/pc.

Light-duty wall and support bracket with welded head plate for screwless mesh cable tray fastening.

Wall and support bracket AW 30



Type	Width mm	Dim. H mm	Dimen- sion A mm	Hole- Ø mm	Pack. pcs	Weight kg/100 pcs.	Item No.
AW 30 11 FT	110	60	50	11	1	22,000	6419 70 4

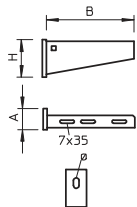
St Steel

FT Hot-dip galvanised

/pc.

Medium-duty wall and support bracket with welded head plate.

Wall and support bracket AW 55



Type	Width mm	Dim. H mm	Dimen- sion A mm	Hole- Ø mm	Pack. pcs	Weight kg/100 pcs.	Item No.
AW 55 21 FT	210	90	50	13.5	1	77,000	6418 55 4
AW 55 31 FT	310	110	50	13.5	1	123,000	6418 57 0
AW 55 41 FT	410	130	50	13.5	1	167,000	6418 59 7

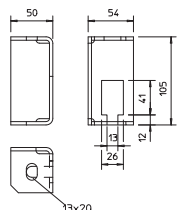
St Steel

FT Hot-dip galvanised

/pc.

Heavy-duty wall and support bracket with welded head plate.

Fire protection clamp



Type	Pack. pcs	Weight kg/100 pcs.	Item No.
BSB FT	20	42,400	6418 19 8

St Steel

FT Hot-dip galvanised

/pc.

Fire protection clamp for ceiling fastening of the threaded rod lock for routing types with cable ladders and cable trays for function maintenance to DIN 4102 Part 12.

Threaded rod

Type	Thread	Dim.		Pack. pcs	Weight kg/100 pcs.	Item No.
		d mm	L mm			
2078 M10 1M G	M10	10	1000	10	49,000	3141 20 9
2078 M12 1M G	M12	12	1000	10	62,000	3141 30 6

St Steel /100 pc.

G Electrogalvanised

Threaded rod to DIN 976.



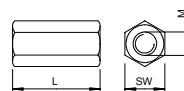
Connection sleeve

Type	Thread	Dim.		Pack. pcs	Weight kg/100 pcs.	Item No.
		L mm	SW mm			
12005 M10 G	M10	40	17	50	6,000	6410 10 3
12005 M12 G	M12	40	19	25	7,000	6410 11 1

St Steel /100 pc.

G Electrogalvanised

Connection sleeve with continuous internal thread.



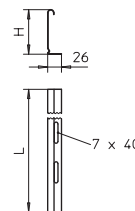
Separating retainer

Type	Side height mm	Length mm	Pack. m	Weight kg/100 m	Item No.

St Steel /m

FS Strip-galvanised

Separating retainer for separation of cables of different voltages or functions.



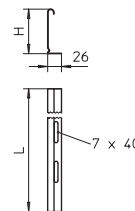
Separating retainer

Type	Side height mm	Length mm	Weight kg/100 m	Item No.

St Steel /m

FS Strip-galvanised

Separating retainer for separation of cables of different voltages or functions.

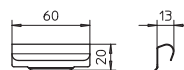


Separating retainer connector

Type	Pack. pcs	Weight kg/100 pcs.	Item No.

V2A Stainless steel, grade 301 /pc.

Separating retainer connector for screwless connection of the TSG separating retainer in all side heights.

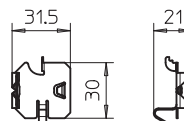


Separating retainer clamping piece for cable tray

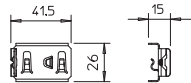
Type	Pack. pcs	Weight kg/100 pcs.	Item No.

V2A Stainless steel, grade 301 /100 pc.

Clamping piece for screwless fastening of separating retainers in the cable tray types RKSM, MKS and SKS.



Separating retainer clamping piece for mesh cable tray



Type

KS GR VA4310

V2A Stainless steel, grade 301

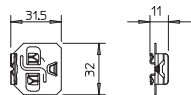
Clamping piece for fastening separating retainers in mesh cable trays.

Pack. Weight

pcs	kg/100 pcs.	Item No.
30	0,830	6062 28 2

/100 pc.

Separating retainer clamping piece for cable ladder



Type

KS KL VA4310

V2A Stainless steel, grade 301

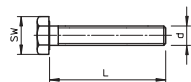
Clamping piece for screwless fastening of separating retainers in cable ladders.

Pack. Weight

pcs	kg/100 pcs.	Item No.
30	0,512	6062 28 4

/100 pc.

Hexagonal bolt with continuous thread



Type	Dimension mm	Dim.			Pack. pcs	Weight kg/100 pcs.	Item No.
		L mm	d mm	SW mm			

SKS 10X80 F	M 10 x 80	80	10	17	20	7,700	6418 25 0
SKS 10X90 F	M 10 x 90	90	10	17	20	7,800	6418 25 2

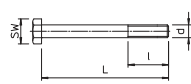
St Steel

F Hot-dip galvanised

/100 pc.

Hexagonal bolt for universal fastening of construction components.

Hexagonal bolt with shaft and thread



Type	Dimension mm	Dim.				Pack. pcs	Weight kg/100 pcs.	Item No.
		L mm	l mm	d mm	SW mm			

SKS 12X80 F	M 12 x 80	80	30	12	19	20	11,800	6418 28 7
SKS 12X100 F	M 12 x 100	100	30	12	19	20	12,600	6418 29 5
SKS 12X110 F	M 12 x 110	110	30	12	19	20	14,500	6418 31 7

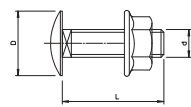
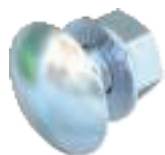
St Steel

F Hot-dip galvanised

/100 pc.

Hexagonal bolt with hexagonal nut, washer and tooth lock washer.

Truss-head bolt with combination nut



Type	Thread	Length mm	Dim.			Pack. pcs	Weight kg/100 pcs.	Item No.
			D mm	d mm	SW mm			

FRSB 6X12 F	M6	12	13.5	6	10	100	0,990	6406 12 2
FRSB 6X15 F	M6	16	13.5	6	10	100	0,800	6406 15 7
FRSB 6X20 F	M6	20	13.5	6	10	100	1,000	6406 20 3

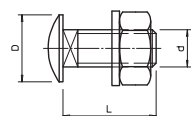
St Steel

F Hot-dip galvanised

/100 pc.

Truss-head bolt with square neck including nut-and-washer assembly.

Truss-head bolt with nut and washer



Type	Thread	Dim.				Pack. pcs	Weight kg/100 pcs.	Item No.
		L mm	D mm	d mm	SW mm			

FRS 10X25 F	M10	25	24	10	17	50	4,500	6407 52 8
--------------------	-----	----	----	----	----	----	-------	------------------

St Steel

F Hot-dip galvanised

/100 pc.

Truss-head bolt with square neck. With washer and hexagonal nut.

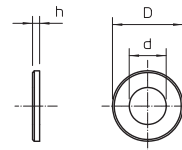
Large washer DIN 440

Type	Dimension D mm	Dimension d mm	Dimension h mm	Pack. pcs	Weight kg/100 pcs.	Item No.
DIN440 11 F	34	11	3	100	1,985	6408 72 9
DIN440 14 F	44	13.5	4	50	4,736	6408 73 7

St Steel

F Hot-dip galvanised

/100 pc.



Washer of particularly large outer diameter.

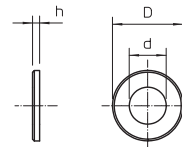
Washer

Type	Thread	Dimension d mm	Dimension D mm	Dimension h mm	Pack. pcs	Weight kg/100 pcs.	Item No.
966 M10 G	M10	10.5	20	2	100	0,408	3402 09 6
966 M12 G	M12	13	24	2.5	100	0,627	3402 12 6

St Steel

G Electrogalvanised

/100 pc.



Washer according to DIN 125, shape A, for universal use.

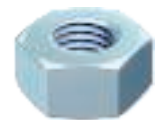
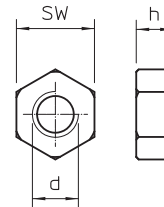
Hexagonal nut

Type	Thread	SW mm	Dimension h mm	Dimension d mm	Pack. pcs	Weight kg/100 pcs.	Item No.
DIN 934 M10 G	M10	17	8.4	10	100	1,084	3400 10 7
DIN 934 M12 G	M12	19	10.8	12	100	1,730	3400 12 3

St Steel

G Electrogalvanised

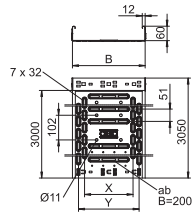
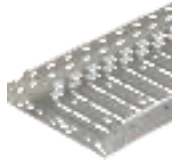
/100 pc.



Hexagonal nut to DIN 934 with metric thread.



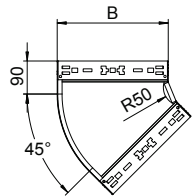
Cable tray RKS-Magic®



Type	Plate		Pack.	Weight		Item No.
	Width mm	thickness mm		m	kg/100 m	
RKSM 610 VA4301	100	0.75	3	132,130		6047 61 3
RKSM 620 VA4301	200	0.75	3	180,000		6047 64 0
RKSM 630 VA4301	300	0.75	3	235,080		6047 65 6
RKSM 610 VA4571	100	0.75	3	132,130		6047 61 4
RKSM 620 VA4571	200	0.75	3	180,000		6047 64 1
RKSM 630 VA4571	300	0.75	3	235,080		6047 65 7

V2A Stainless steel, grade 304 V4A Stainless steel, grade 316 Ti /m
 RKSM 60 = efficient magic cable tray system with 60 mm side height.

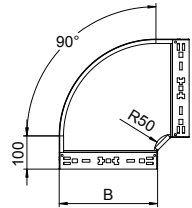
45° bend



Type	Width mm	Pack. pcs	Weight		Item No.
			kg/100 pcs.	pcs.	
RBM 45 610VA4301	100	1	50,400		6041 08 0
RBM 45 620VA4301	200	1	86,000		6041 08 4
RBM 45 630VA4301	300	1	128,300		6041 08 6
RBM 45 610VA4571	100	1	50,400		6041 10 0
RBM 45 620VA4571	200	1	86,000		6041 10 4

V2A Stainless steel, grade 304 V4A Stainless steel, grade 316 Ti /pc.
 45° bend with quick connector system. For all cable tray types of 60 mm side height.

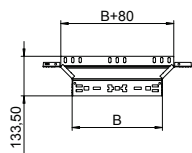
90° bend



Type	Width mm	Pack. pcs	Weight		Item No.
			kg/100 pcs.	pcs.	
RBM 90 610VA4301	100	1	65,700		6041 18 0
RBM 90 620VA4301	200	1	122,100		6041 18 4
RBM 90 630VA4301	300	1	192,800		6041 18 6
RBM 90 610VA4571	100	1	65,700		6041 20 0
RBM 90 620VA4571	200	1	122,100		6041 20 4
RBM 90 630VA4571	300	1	192,800		6041 20 6

V2A Stainless steel, grade 304 V4A Stainless steel, grade 316 Ti /pc.
 90° bend with quick connector system. For all cable tray types of 60 mm side height.

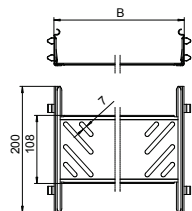
Mounting/branch piece



Type	Width mm	Pack. pcs	Weight		Item No.
			kg/100 pcs.	pcs.	
RAAM 610 VA4301	100	1	37,900		6041 27 0
RAAM 620 VA4301	200	1	50,600		6041 27 5
RAAM 630 VA4301	300	1	63,500		6041 27 7
RAAM 610 VA4571	100	1	37,900		6041 29 0
RAAM 620 VA4571	200	1	50,600		6041 29 4
RAAM 630 VA4571	300	1	63,500		6041 29 6

V2A Stainless steel, grade 304 V4A Stainless steel, grade 316 Ti /pc.
 Add-on tee with quick connector system. For all cable tray types of 60 mm side height.

Connector

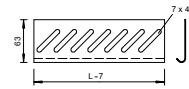


Type	Side height mm	Width mm	Pack. pcs	Weight		Item No.
				kg/100 pcs.	pcs.	
KTSMV 610 VA4301	60	100	1	30,500		6068 95 8
KTSMV 620 VA4301	60	200	1	37,200		6068 96 2
KTSMV 630 VA4301	60	300	1	44,000		6068 96 4
KTSMV 610 VA4571	60	100	1	30,500		6068 98 0
KTSMV 620 VA4571	60	200	1	37,200		6068 98 4
KTSMV 630 VA4571	60	300	1	44,000		6068 98 6

V2A Stainless steel, grade 304 V4A Stainless steel, grade 316 Ti /pc.
 Cable tray connector with quick fastening for the screwless connection of perforated cable trays with a side height of 60 mm.

Floor end plate

Type	Width mm	Pack. pcs	Weight		Item No.
			kg/100	pcs.	
BEB 100 VA4301	100	100	5,500		7084 01 3
BEB 200 VA4301	200	100	11,400		7084 04 8
BEB 300 VA4301	300	100	17,200		7084 06 4
BEB 100 VA4571	100	100	5,500		7084 14 1
BEB 200 VA4571	200	100	11,400		7084 14 3
BEB 300 VA4571	300	100	17,200		7084 14 5

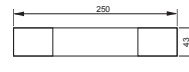


V2A Stainless steel, grade 304 V4A Stainless steel, grade 316 Ti /pc.

For base reinforcement at the ends of the tray and as cable protection.

Identification plate for cable system

Type	Language	Pack. pcs	Weight		Item No.
			kg/100	pcs.	
KS-E DE	German	10	0,600		7205 42 3
KS-E EN	English	10	0,600		7205 43 2
KS-E HU	Hungarian	10	0,600		7205 43 4
KS-E PL	Polish	10	0,600		7205 43 6
KS-E FI	Finnish	10	0,600		7205 43 7
KS-E SE	Swedish	10	0,600		7205 42 4

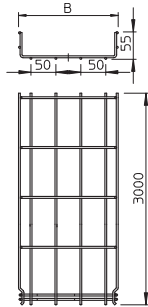


PVC Polyvinylchloride /pc.

Self-adhesive identification plate for approved cable system labelling for function maintenance as required by DIN 4102 Part 12.



Mesh cable tray GR-Magic®



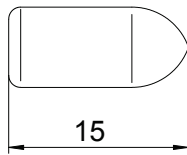
Type	Wire		Pack. m	Weight kg/100 m	Item No.
	Width mm	Ø mm			
GRM 55 300VA4301	300	4.8	3	191,100	6001 07 8
GRM 55 300VA4401	300	4.8	3	191,100	6001 09 3

V2A Stainless steel, grade 304 V4A Stainless steel, grade 316 /m

GB Stained

Mesh cable tray with shaped connector of side height 55 mm.

Protective cap for mesh cable tray

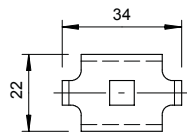


Type	Colour	Pack. pcs	Weight kg/100 pcs.	Item No.

PE Polyethylene /100 pc.

Protective cap to cover cut wire ends of mesh cable trays.

Clamping piece

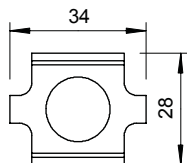


Type	Pack. pcs	Weight kg/100 pcs.	Item No.
GKS 34 VA4401 SP	10	2,000	6016 85 9

V2A Stainless steel, grade 304 V4A Stainless steel, grade 316 /pc.

Clamping piece for fastening mesh cable trays to wall or support brackets.

Connector

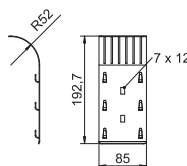


Type	Pack. pcs	Weight kg/100 pcs.	Item No.
GSV 34 VA4401	20	3,000	6016 64 8

V2A Stainless steel, grade 304 V4A Stainless steel, grade 316 /pc.

Screwed version of joint connector for mesh cable trays.

Cable exit plate

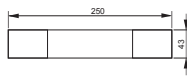


Type	Pack. pcs	Weight kg/100 pcs.	Item No.

V2A Stainless steel, grade 304 /pc.

Cable exit plate for mesh cable trays.

Identification plate for cable system



Type	Language	Pack. pcs	Weight kg/100 pcs.	Item No.
KS-E EN	English	10	0,600	7205 43 2
KS-E HU	Hungarian	10	0,600	7205 43 4
KS-E PL	Polish	10	0,600	7205 43 6
KS-E FI	Finnish	10	0,600	7205 43 7
KS-E SE	Swedish	10	0,600	7205 42 4

PVC Polyvinylchloride /pc.

Self-adhesive identification plate for approved cable system labelling for function maintenance as required by DIN 4102 Part 12.

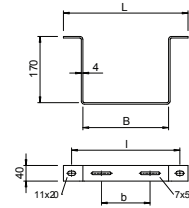
Suspension clamp

Type	Dim. B	Dim. L	Dim. b	Dim. l	Pack. pcs	Weight kg/100 pcs.	Item No.
	mm	mm	mm	mm			
AHB-T1712 VA4547	120	220	—	180	11	67,000	6363 99 7
AHB-T1722 VA4547	220	320	125	280	14	78,000	6364 00 7
AHB-T1732 VA4547	320	420	225	380	11	91,000	6364 01 7

V5A Stainless steel, S31254

/pc.

Special suspension clamp for cable support systems in tunnels. Additional variants, such as adapter or connection clamps, as well as various head shapes, on request.



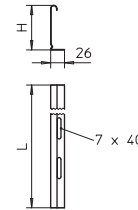
Separating retainer

Type	Side height	Length	Weight	Item No.
	mm			
TSG 45 VA4301	45	3000	47,000	6062 02 5
TSG 45 VA4571	45	3000	48,000	6062 02 8

V2A Stainless steel, grade 304 V4A Stainless steel, grade 316 Ti

/m

Separating retainer for separation of cables of different voltages or functions.



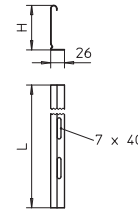
Separating retainer

Type	Side height	Length	Weight	Item No.
	mm			
TSG 60 VA4301	60	3000	55,000	6062 08 4
TSG 60 VA4571	60	3000	56,670	6062 08 6

V2A Stainless steel, grade 304 V4A Stainless steel, grade 316 Ti

/m

Separating retainer for separation of cables of different voltages or functions.



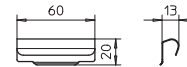
Separating retainer connector

Type	Pack. pcs	Weight kg/100 pcs.	Item No.

V2A Stainless steel, grade 301

/pc.

Separating retainer connector for screwless connection of the TSG separating retainer in all side heights.



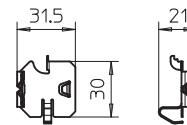
Separating retainer clamping piece for cable tray

Type	Pack. pcs	Weight kg/100 pcs.	Item No.

V2A Stainless steel, grade 301

/100 pc.

Clamping piece for screwless fastening of separating retainers in the cable tray types RKSM, MKS and SKS.



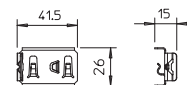
Separating retainer clamping piece for mesh cable tray

Type	Pack. pcs	Weight kg/100 pcs.	Item No.

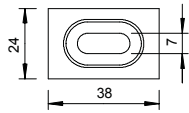
V2A Stainless steel, grade 301

/100 pc.

Clamping piece for fastening separating retainers in mesh cable trays.



Separating retainer clamping piece for mesh cable tray, screwed on



Type

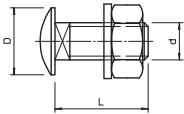
Type	Pack. pcs	Weight kg/100 pcs.	Item No.
GKT 38 VA4301	20	2,200	6017 04 5
GKT 38 VA4401 SP	10	2,200	6017 09 2

V2A Stainless steel, grade 304 V4A Stainless steel, grade 316

/pc.

Clamp for fixing separating retainers in mesh cable trays.

Truss-head bolt with combination nut



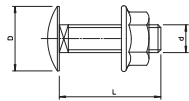
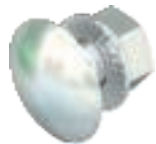
Type	Thread	Dim.			Pack. pcs	Weight kg/100 pcs.	Item No.
		L mm	D mm	d mm			
FRS 6x12 A2	M6	12	13.5	6	100	0,760	6406 52 1
FRS 6x16 A2	M6	15	13.5	6	100	0,900	6406 55 6

V2A Stainless steel, A2

/100 pc.

Truss-head bolt with square neck including washer and hexagonal nut.

Truss-head bolt with combination nut



Type	Thread	Dim.			Pack. pcs	Weight kg/100 pcs.	Item No.
		L mm	D mm	d mm			
FRSB 6x12 A4	M6	12	13.5	6	100	0,796	6406 14 2
FRSB 6x16 A4	M6	16	13.5	6	100	0,800	6406 19 3

V4A Stainless steel, A4

/100 pc.

Truss-head bolt with square neck including nut-and-washer assembly.

