



Modular systems

04_KTS Masterkatalog Länder / en / 25/10/2016 (LLExpert_04366) / 25/10/2016

Modular systems

	AZ channel	524
	Accessories	530
	Motor connection column	534
	BKK system	535
	Accessories	535

AZ channel system 50



Type	Width mm	Plate thickness mm	Pack. m	Weight kg/100 m	Item No.
AZK 050 FS	50	1.5	3	135,000	6075096
AZK 050 FT	50	1.5	12	137,000	6075142

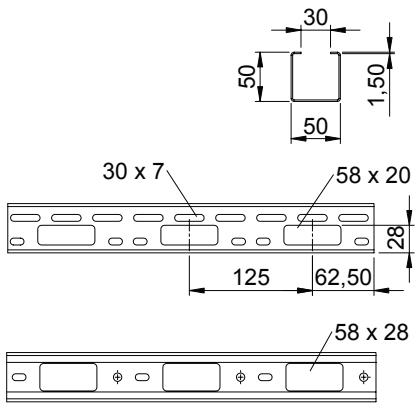
St Steel

FS Strip-galvanised **FT** Hot-dip galvanised

AZ channel with a side height of 50 mm.

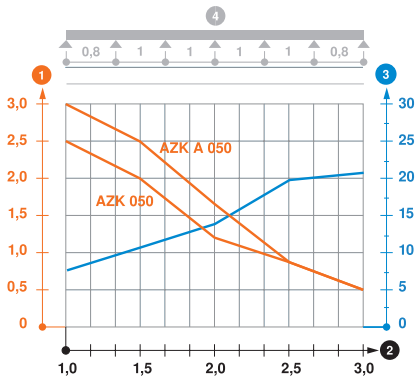
Magnetic shield insulation without cover 20 dB, with cover 50 dB.

Dimensions



Type	Length mm	Width mm	Side height mm
AZK 050 FS	3000	50	50

Load



Type	1.0 m kN/m	1.5 m kN/m	2.0 m kN/m	2.5 m kN/m	3.0 m kN/m
AZK 050 FS	2.5	2	1.2	0.85	0.5

Load diagram, AZ channel

- 1 Permitted cable tray/ladder load in kN/m without man load
- 2 Support width in m
- 3 Rail bend in mm at permitted kN/m
- 4 Load scheme during testing
- Load curve with cable tray/ladder width in mm
- Strut bend curve according to support width

AZ channel system 50

Type	Plate		Pack. m	Weight kg/100 m	Item No.
	Width mm	thickness mm			
AZK A 050 FT	50	1.5	3	165,670	6076149

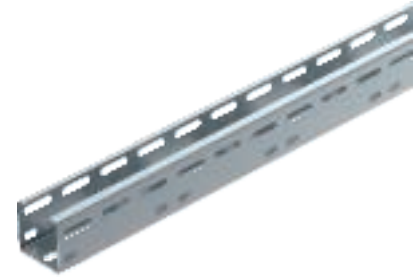
St Steel

FT Hot-dip galvanised

/m

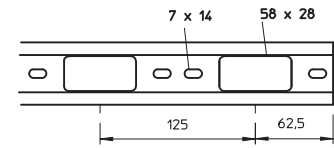
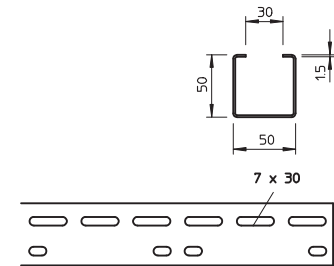
AZ channel with a side height of 50 mm.

Magnetic shield insulation without cover 20 dB, with cover 50 dB.



Type	Length mm	Width mm	Side
			height mm
AZK A 050 FT	3000	50	50

Dimensions

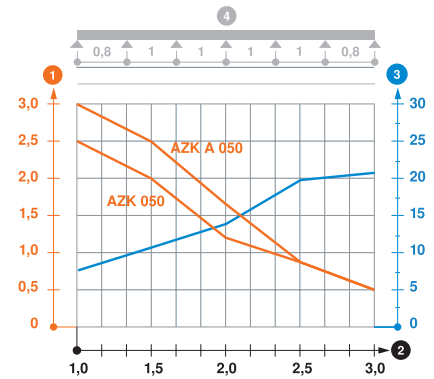


Load

Type	1.0 m	1.5 m	2.0 m	2.5 m	3.0 m
	kN/m	kN/m	kN/m	kN/m	kN/m
AZK A 050 FT	3	2.5	1.7	0.85	0.5

Load diagram, AZ channel

- 1 Permitted cable tray/ladder load in kN/m without man load
- 2 Support width in m
- 3 Rail bend in mm at permitted kN/m
- 4 Load scheme during testing
- Load curve with cable tray/ladder width in mm
- Strut bend curve according to support width



AZ channel system 100



Type	Plate		Pack. m	Weight kg/100 m	Item No.
	Width mm	thickness mm			
AZK 100 FS	100	1.5	3	177,000	6075231
AZK 100 FT	100	1.5	12	188,000	6075258

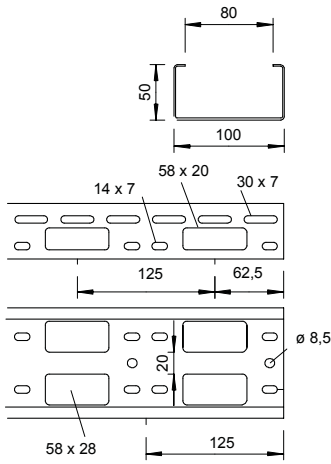
St Steel

FS Strip-galvanised **FT** Hot-dip galvanised

AZ channel with a side height of 50 mm.

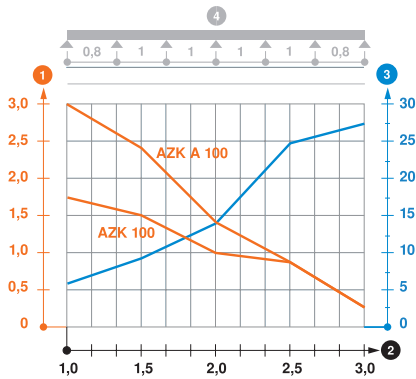
Magnetic shield insulation without cover 20 dB, with cover 50 dB.

Dimensions



Type	Length mm	Width mm	Side
			height mm
AZK 100 FS	3000	100	50

Load



Type	1.0 m	1.5 m	2.0 m	2.5 m	3.0 m
	kN/m	kN/m	kN/m	kN/m	kN/m
AZK 100 FS	1.7	1.5	1	0.8	0.25

Load diagram, AZ channel

- 1 Permitted cable tray/ladder load in kN/m without man load
- 2 Support width in m
- 3 Rail bend in mm at permitted kN/m
- 4 Load scheme during testing
- Load curve with cable tray/ladder width in mm
- Strut bend curve according to support width

AZ channel system 100

Type	Plate		Pack. m	Weight kg/100 m	Item No.
	Width mm	thickness mm			
AZK A 100 FT	100	1.5	3	165,670	6076246

St Steel

FT Hot-dip galvanised

/m

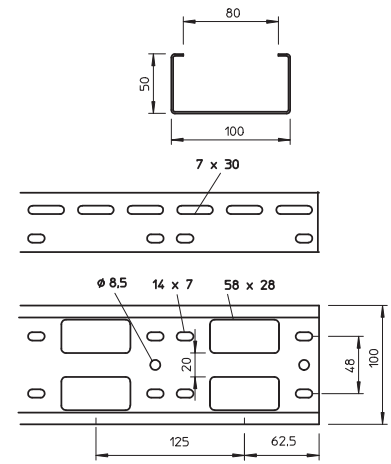
AZ channel with a side height of 50 mm.

Magnetic shield insulation without cover 20 dB, with cover 50 dB.



Type	Length mm	Width mm	Side
			height mm
AZK A 100 FT	3000	100	50

Dimensions

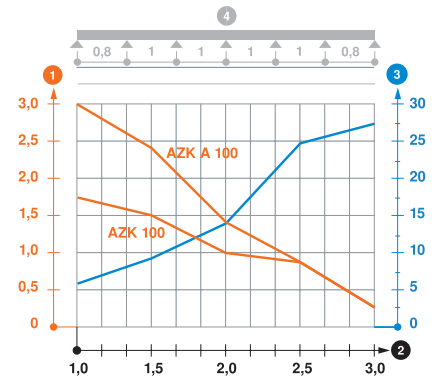


Load

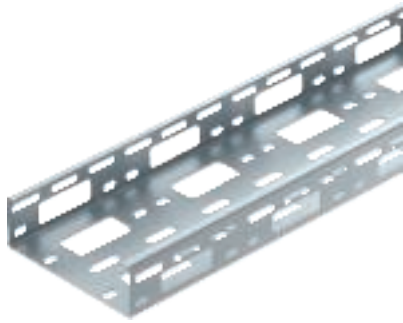
Type	1.0 m	1.5 m	2.0 m	2.5 m	3.0 m
	kN/m	kN/m	kN/m	kN/m	kN/m
AZK A 100 FT	3	2.4	1.4	0.8	0.25

Load diagram, AZ channel

- 1 Permitted cable tray/ladder load in kN/m without man load
- 2 Support width in m
- 3 Rail bend in mm at permitted kN/m
- 4 Load scheme during testing
- Load curve with cable tray/ladder width in mm
- Strut bend curve according to support width



AZ channel system 150



Type	Plate		Pack. m	Weight kg/100 m	Item No.
	Width mm	thickness mm			
AZK 150 FS	150	1.5	3	231,700	6075320
AZK 150 FT	150	1.5	3	245,700	6075325

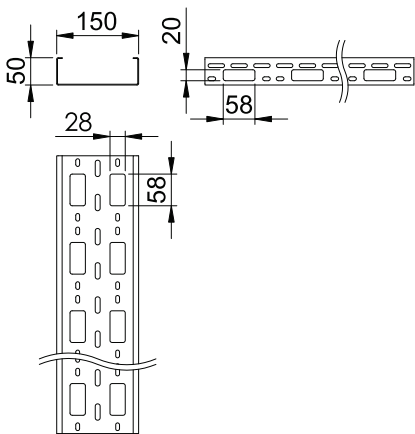
St Steel

FS Strip-galvanised **FT** Hot-dip galvanised

AZ channel with a side height of 50 mm.

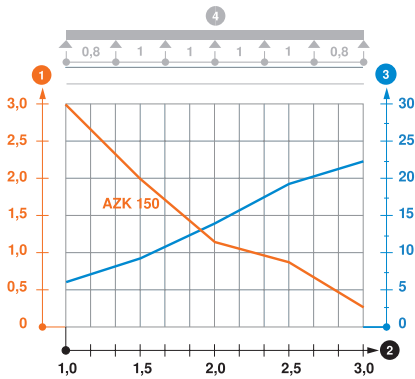
Magnetic shield insulation without cover 20 dB, with cover 50 dB.

Dimensions



Type	Length mm	Width mm	Side
			height mm
AZK 150 FS	3000	150	50

Load



Type	1.0 m	1.5 m	2.0 m	2.5 m	3.0 m
	kN/m	kN/m	kN/m	kN/m	kN/m
AZK 150 FS	3	2	1.2	0.8	0.25

Load diagram, AZ channel

- 1 Permitted cable tray/ladder load in kN/m without man load
- 2 Support width in m
- 3 Rail bend in mm at permitted kN/m
- 4 Load scheme during testing
- Load curve with cable tray/ladder width in mm
- Strut bend curve according to support width

AZ channel system 200

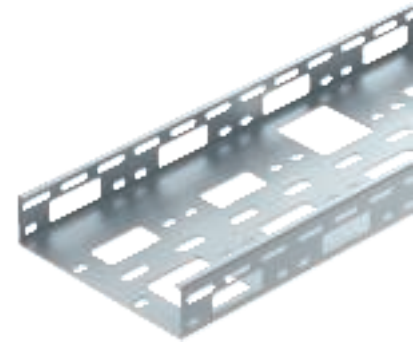
Type	Plate		Pack. m	Weight kg/100 m	Item No.
	Width mm	thickness mm			
AZK 200 FS	200	1.5	3	280,300	6075345
AZK 200 FT	200	1.5	3	296,000	6075350

St Steel

FS Strip-galvanised **FT** Hot-dip galvanised

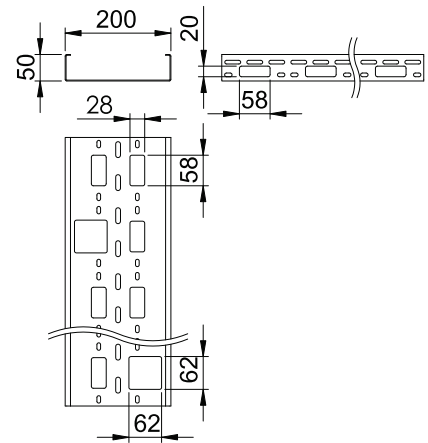
AZ channel with a side height of 50 mm.

Magnetic shield insulation without cover 20 dB, with cover 50 dB.



Dimensions

Type	Length mm	Width mm	Side
			height mm
AZK 200 FS	3000	200	50

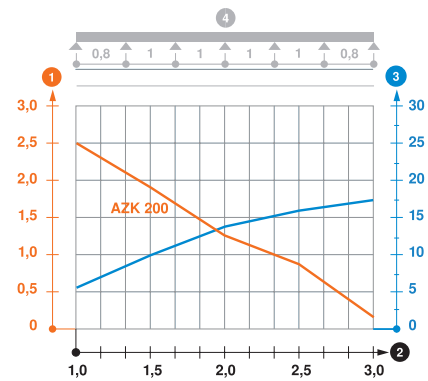


Type	1.0 m	1.5 m	2.0 m	2.5 m	3.0 m
	kN/m	kN/m	kN/m	kN/m	kN/m
AZK 200 FS	2.5	1.9	1.3	0.8	0.3

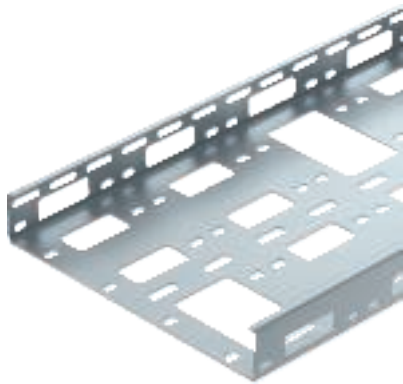
Load diagram, AZ channel

- 1 Permitted cable tray/ladder load in kN/m without man load
- 2 Support width in m
- 3 Rail bend in mm at permitted kN/m
- 4 Load scheme during testing
- Load curve with cable tray/ladder width in mm
- Strut bend curve according to support width

Load



AZ channel system 300



Type	Plate		Pack. m	Weight kg/100 m	Item No.
	Width mm	thickness mm			
AZK 300 FS	300	1.5	6	359,300	6075370
AZK 300 FT	300	1.5	6	381,000	6075375

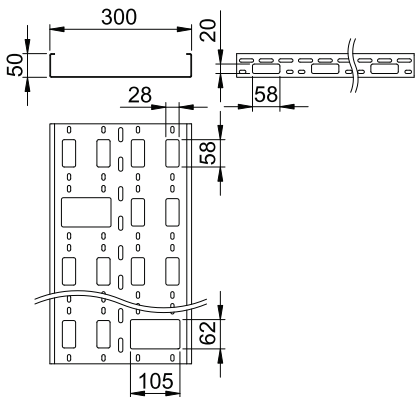
St Steel

FS Strip-galvanised **FT** Hot-dip galvanised

AZ channel with a side height of 50 mm.

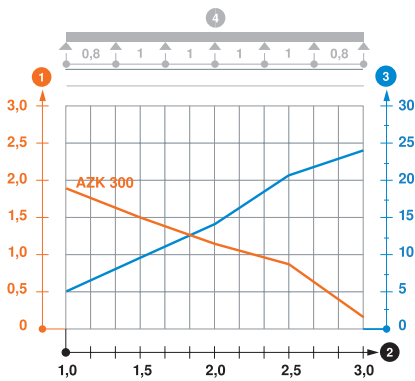
Magnetic shield insulation without cover 20 dB, with cover 50 dB.

Dimensions



Type	Length mm	Width mm	Side
			height mm
AZK 300 FS	3000	300	50

Load

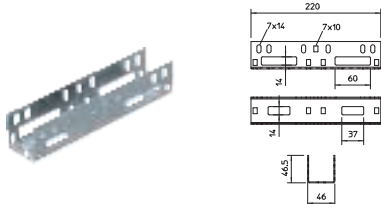


Type	1.0 m	1.5 m	2.0 m	2.5 m	3.0 m
	kN/m	kN/m	kN/m	kN/m	kN/m
AZK 300 FS	1.9	1.5	1.2	0.8	0.3

Load diagram, AZ channel

- ① Permitted cable tray/ladder load in kN/m without man load
- ② Support width in m
- ③ Rail bend in mm at permitted kN/m
- ④ Load scheme during testing
- Load curve with cable tray/ladder width in mm
- Strut bend curve according to support width

Straight connector



Type	Pack. pcs	Weight		Item No.
		kg/100 pcs.	pcs.	
VF AZK 50 FS	25	27,100		6066615
VF AZK 50 DD	25	27,100		6066623

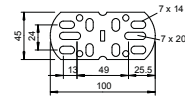
St Steel

FS Strip-galvanised **DD** Strip galvanised zinc/aluminium, Double Dip

Straight connector for connection of luminaire support channels and AZ channels.

Straight and angle connector

Type	Pack. pcs	Weight kg/100 pcs.	Item No.
VF AZK FT	25	7,500	6066550
St Steel			/pc.
FT Hot-dip galvanised			

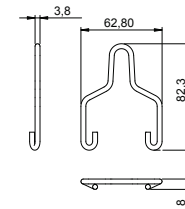


An adjustable connector can be created using two straight and angle connectors. Scope of delivery including bolts with flange nuts.

Straight and angle connector for connection of AZ channels.

Suspension bracket

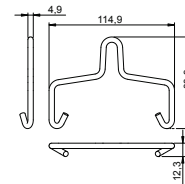
Type	F in kN	Pack. pcs	Weight kg/100 pcs.	Item No.
AHB 50 D4 FT	0.35	50	1,985	6066505
St Steel				/100 pc.
F Hot-dip galvanised				



Suspension bracket for chain or steel wire tensioning rope fastening of the luminaire support rail, type LTS 50, and the AZ small duct, type AZK 50.

Suspension bracket

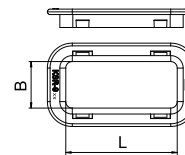
Type	F in kN	Pack. pcs	Weight kg/100 pcs.	Item No.
AHB 100 D5 FT	0.6	50	4,060	6066510
St Steel				/100 pc.
F Hot-dip galvanised				



Suspension bracket for chain or steel wire tensioning rope fastening of the luminaire support rail, type LTS 100, and the AZ small duct, type AZK 100.

Cable protection ring

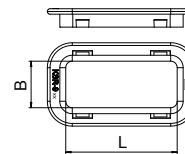
Type	Colour	for perforation mm	Pack. pcs	Weight kg/100 pcs.	Item No.
KSR-915 PE	Light grey	28 x 58	25	0,520	6066704
PE Polyethylene					/pc.



Cable protection ring for bottom perforations in AZ channels and luminaire support channels.

Cable protection ring

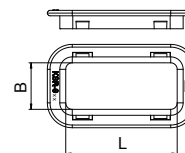
Type	Colour	for perforation mm	Pack. pcs	Weight kg/100 pcs.	Item No.
KSR-910 PE	Light grey	20 x 58	25	0,470	6066712
PE Polyethylene					/pc.



Cable protection ring for bottom perforation in cable trays of type IKS and for side perforation in AZ channels and luminaire support channel.

Cable protection ring

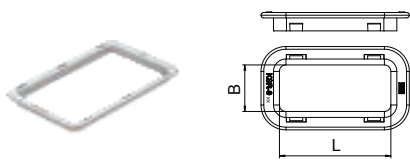
Type	Colour	For floor perforation mm	Pack. pcs	Weight kg/100 pcs.	Item No.
KSR-920 PE	Light grey	62 x 62	25	0,770	6066696
PE Polyethylene					/pc.



Cable protection ring for bottom perforations in AZ channels and luminaire support channels.



Cable protection ring



Type	Colour	For floor perforation mm	Pack. pcs	Weight kg/100 pcs.	Item No.
KSR-925 PE	Light grey	105 x 62	25	1,040	6066688

PE Polyethylene /pc.

Cable protection ring for bottom perforations in AZ channels and luminaire support channels.

Cover



Type	Width mm	Length mm	Pack. m	Weight kg/100 m	Item No.
AZDU 50 DD	53	3000	3	55,000	6080158
AZDU 100 DD	103	3000	3	93,300	6080239

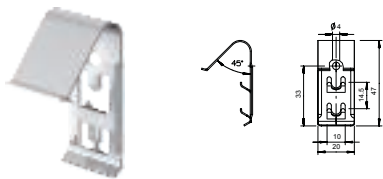
SI Steel /m

DD Strip galvanised zinc/aluminium, Double Dip

To fasten the cover, use the cover clamp, type DKU.

Cover without turn-buckles for AZ channel.

Cover clamp



Type	Pack. pcs	Weight kg/100 pcs.	Item No.
DKU VA4310	20	0,800	6065600

V2A Stainless steel, grade 301 /100 pc.

Depending on the tray width, 4–6 cover clamps are required for secure fastening of a 3 m cover.

Cover clamp for universal fastening of covers on cable trays, mesh cable trays and AZ channels.

The cover clamp is not suitable for use with mesh cable trays with a side height of 35 mm.

Cover with turn buckle



Type	Width mm	Length mm	Pack. m	Weight kg/100 m	Item No.
AZDMD 50 FS	53	3000	3	75,000	6080138
AZDMD 100 FS	103	3000	3	96,700	6080227
AZDMD 150 FS	153	3000	3	133,000	6080860
AZDMD 200 FS	203	3000	3	172,330	6080885
AZDMD 300 FS	303	3000	3	250,700	6080910

SI Steel /m

FS Strip-galvanised

Cover with turn buckle for AZ channel.

Cover with turn buckle



Type	Width mm	Dimension H mm	Length mm	Weight kg/100 m	Item No.
AZDG 50 FS	53	10	3000	75,000	6080960
AZDG 100 FS	103	10	3000	93,330	6080979

SI Steel /m

FS Strip-galvanised

Perforated cover, for threaded rod installation, without turn buckle for AZ small duct.

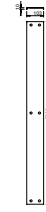
To fasten the cover, the cover clamp DKU is required.

Cover with turn buckle

Type	Width mm	Length mm	Pack. m	Weight kg/100 m	Item No.
AZDMD 50 DD	53	3000	3	58,300	6080154
AZDMD 100 DD	103	3000	3	101,700	6080235
AZDMD 150 FT	153	3000	3	137,000	6080865
AZDMD 200 FT	203	3000	3	177,000	6080890
AZDMD 300 FT	303	3000	3	250,700	6080915

Sl Steel /m
 FT Hot-dip galvanised DD Strip galvanised zinc/aluminium, Double Dip

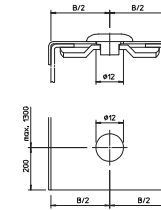
Cover with turn buckle for AZ channel.



Type	For width mm	Pack. pcs	Weight kg/100 pcs.	Item No.
AZDR 50 FT	50	20	2,000	6065112

Sl Steel /pc.
 FT Hot-dip galvanised

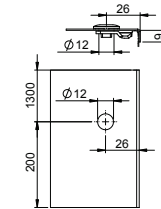
Turn buckle for installation in the cover for AZ channel and BKK system at a later date.



Type	For width mm	Pack. pcs	Weight kg/100 pcs.	Item No.
AZDR 100 FT	100	20	1,100	6065104

Sl Steel /pc.
 FT Hot-dip galvanised

Turn buckle for installation in the cover for AZ channel and BKK system at a later date.



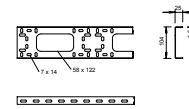
BKK basic profile, standard

Type	Plate			Pack. m	Weight kg/100 m	Item No.
	thickness mm	Dimension mm	Length mm			
BKK 104 FT	1.5	104 x 25	3000	3	134,340	6070248

St Steel

FT Hot-dip galvanised

BKK basic profile, perforated, for creation of individual cable trays.



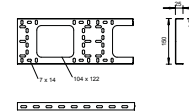
BKK basic profile, standard

Type	Plate			Pack. m	Weight kg/100 m	Item No.
	thickness mm	Dimension mm	Length mm			
BKK 150 FT	1.5	150 x 25	3000	3	160,000	6070345

St Steel

FT Hot-dip galvanised

BKK basic profile, perforated, for creation of individual cable trays.



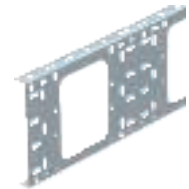
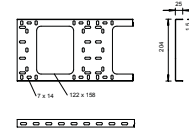
BKK basic profile, standard

Type	Plate			Pack. m	Weight kg/100 m	Item No.
	thickness mm	Dimension mm	Length mm			
BKK 200 FT	1.5	200 x 25	3000	3	212,000	6070442

St Steel

FT Hot-dip galvanised

BKK basic profile, perforated, for creation of individual cable trays.



Joint connector

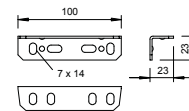
Type	Plate		Pack. pcs	Weight kg/100 pcs.	Item No.
	thickness mm	Dimension mm			
SSV FT	2	23 x 23 x 100	25	8,700	6066046

St Steel

FT Hot-dip galvanised

Including appropriate fastening material.

Joint connector for horizontal connection of BKK basic profiles.



Adjustable connector

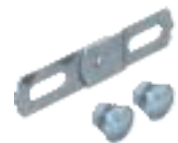
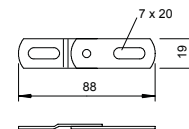
Type	Plate		Pack. pcs	Weight kg/100 pcs.	Item No.
	thickness mm	Dimension mm			
SV DD	2	86 x 23	50	3,300	6066941

St Steel

DD Strip galvanised zinc/aluminium, Double Dip

Including appropriate fastening material.

Adjustable connector for vertical bend connections of BKK systems.



Truss-head bolt

Type	Dimension mm	Dim.			Pack. pcs	Weight kg/100 pcs.	Item No.
		L mm	d mm	D mm			
FRSB 6X12 F	M 6 x 12	12	6	13.5	100	0,990	6406122
FRSB 6X15 F	M 6 x 15	15	6	13.5	100	0,800	6406157
FRSB 6X20 F	M 6 x 20	20	6	13.5	100	1,000	6406203

St Steel

F Hot-dip galvanised

Truss-head bolt with square neck including flange nut.

