



Surge protection
Energy technology
Arrestor 2+3



Surge protection Energy technology, type 2+3 arrestor

	Surge arrester V10 Compact, 150, 255, 385 V	250
	Surge arrester V10, 280 V	256
	Surge arrester V10, 320 V	259
	Accessories, upper parts and bases V10	260
	Surge arrester LED	263

Type 2+3, surge arrester V10



1-pole + NPE

Volts	Item no.	Page
280	5093 41 8	258

3-pole + NPE

Volts	Item no.	Page
280	5094 92 0	256
320	5094 92 4	259

Type 2+3, surge arrester V10 with remote signalling



3-pole + NPE + FS

Volts	Item no.	Page
280	5094 93 1	257

Type 2+3, surge arrester V10 covers



Upper part

Volts	Item no.	Page
150	5093 40 0	260
280	5093 40 2	260
320	5093 40 4	260
385	5093 40 6	261



Type 2+3, surge arrester V10 Compact



3-pole + NPE

Volts	Item no.	Page
150	5093 37 8	250
255	5093 38 0	251
385	5093 38 4	252

Type 2+3, surge arrester V10 Compact with remote/acoustic signalling



3-pole + NPE + FS

Volts	Item no.	Page
255	5093 38 2	254



3-pole + NPE + AS

Volts	Item no.	Page
255	5093 39 1	253

Type 2+3, surge arrester ÜSM-LED



IP20

Volts	Item no.	Page
230	5092 48 0	263
440	5092 48 2	263



IP65

Volts	Item no.	Page
230	5092 47 8	264

Surge arrester Compact 150 V



Type	Highest continuous voltage V	Version	Pack. pcs	Weight kg/100 pcs.	Item No.
V10 COMPACT 150	150	3 + NPE	1	15,800	5093378

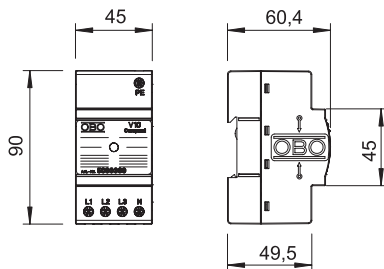
/pc.

Surge protection device, compact module type 2+3

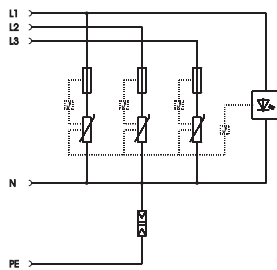
- For surge protection equipotential bonding to VDE 0100-443 (IEC 60364-4-44)
- Arresting capacity up to 60 kA (8/20) in total
- Integrated 3+1 solution for TN and TT network systems on 45 mm module width
- High-performance varistor technology
- Including thermic and dynamic cut-off unit and visual function display
- Optionally with acoustic signalling (-AS) or remote signalling (-FS)

Application: Industry, residential buildings as well as for device protection in alternating current systems.

Dimensions



Connection options



V10 COMPACT 150

Nominal voltage	U_N	130 V
SPD to EN 61643-11		Type 2+3
SPD to IEC 61643-11		Class II+III
Lightning protection zone LPZ		1-3
Nominal discharge current (8/20)	I_n	10 kA
Arrestor surge current (8/20) [total]	$I_{Total 8/20}$	60 kA
Maximum discharge current (8/20 μ s)	I_{max}	20 kA
Voltage protection level	U_d	< 0,7 kV
Response time	t_A	< 25 ns
Maximum back-up fuse		63 A
Temperature range	ϑ	-40 - +80 °C
Division unit TE (17.5 mm)		2.5
Protection rating		IP20
Connection cross-section rigid		2.5 - 10 mm ²
Connection cross-section, multi-wire		2.5 - 10 mm ²
Connection cross-section, flexible		2.5 - 10 mm ²

Surge arrester Compact 255 V



Type	Highest continuous voltage V	Version	Pack. pcs	Weight kg/100 pcs.	Item No.
V10 COMPACT 255	255	3 + NPE	1	15,800	5093380

/pc.

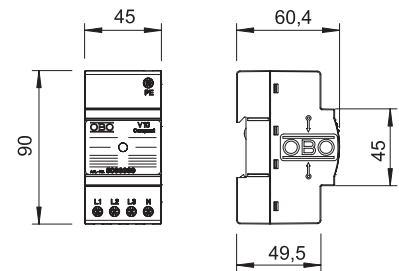
Surge protection device, compact module type 2+3

- For surge protection equipotential bonding to VDE 0100-443 (IEC 60364-4-44)
- Arresting capacity up to 60 kA (8/20) in total
- Integrated 3+1 solution for TN and TT network systems on 45 mm module width
- High-performance varistor technology
- Including thermic and dynamic cut-off unit and visual function display
- Optionally with acoustic signalling (-AS) or remote signalling (-FS)

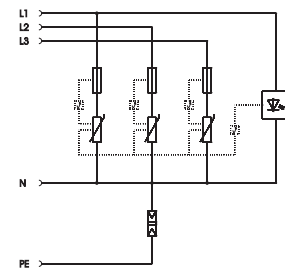
Application: Industry, residential buildings as well as for device protection in alternating current systems.



Dimensions



Connection options



V10 COMPACT 255

Nominal voltage	U_N	230 V
SPD to EN 61643-11		Type 2+3
SPD to IEC 61643-11		Class II+III
Lightning protection zone LPZ		1→3
Nominal discharge current (8/20)	I_n	10 kA
Arrestor surge current (8/20) [total]	$I_{Total\ 8/20}$	60 kA
Maximum discharge current (8/20 μ s)	I_{max}	20 kA
Voltage protection level	U_p	< 1,1 kV
Response time	t_A	< 25 ns
Maximum back-up fuse		63 A
Temperature range	ϑ	-40 - +80 °C
Division unit TE (17.5 mm)		2.5
Protection rating		IP20
Connection cross-section rigid		2.5 - 10 mm ²
Connection cross-section, multi-wire		2.5 - 10 mm ²
Connection cross-section, flexible		2.5 - 10 mm ²



Surge arrester Compact 385 V



Type	Highest continuous voltage V	Version	Pack. pcs	Weight kg/100 pcs.	Item No.
V10 COMPACT 385	385	3 + NPE	1	16,800	5093384

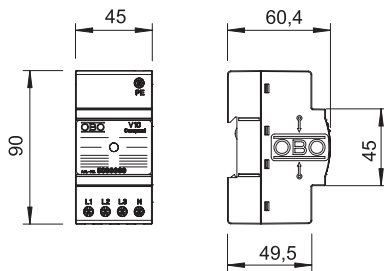
/pc.

Surge protection device, compact module type 2+3

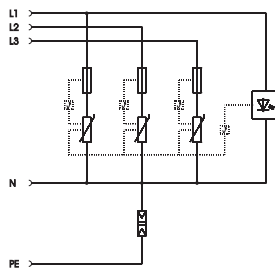
- For surge protection equipotential bonding to VDE 0100-443 (IEC 60364-4-44)
- Arresting capacity up to 60 kA (8/20) in total
- Integrated 3+1 solution for TN and TT network systems on 45 mm module width
- High-performance varistor technology
- Including thermic and dynamic cut-off unit and visual function display
- Optionally with acoustic signalling (-AS) or remote signalling (-FS)

Application: Industry, residential buildings as well as for device protection in alternating current systems.

Dimensions



Connection options



V10 COMPACT 385

Nominal voltage	U_N	385 V
SPD to EN 61643-11		Type 2+3
SPD to IEC 61643-11		Class II+III
Lightning protection zone LPZ		1-3
Nominal discharge current (8/20)	I_n	10 kA
Arrestor surge current (8/20) [total]	$I_{Total 8/20}$	60 kA
Maximum discharge current (8/20 μ s)	I_{max}	20 kA
Voltage protection level	U_d	< 1,5 kV
Response time	t_A	< 25 ns
Maximum back-up fuse		63 A
Temperature range	ϑ	-40 - +80 °C
Division unit TE (17.5 mm)		2.5
Protection rating		IP20
Connection cross-section rigid		2.5 - 10 mm ²
Connection cross-section, multi-wire		2.5 - 10 mm ²
Connection cross-section, flexible		2.5 - 10 mm ²

Surge arrester Compact with acoustic signalling



Type	Highest continuous voltage V	Version	Designation	Pack. pcs	Weight kg/100 pcs.	Item No.
V10 COMPACT-AS	255	3 + NPE	with acoustic signalling	1	15,800	5093391

/pc.

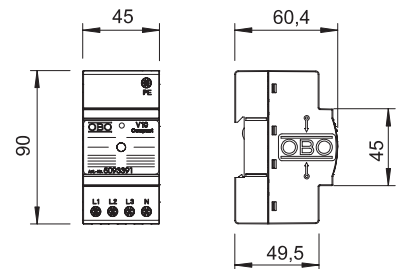
Surge protection device, compact module type 2+3

- For surge protection equipotential bonding to VDE 0100-443 (IEC 60364-4-44)
- Arresting capacity up to 60 kA (8/20) in total
- Integrated 3+1 solution for TN and TT network systems on 45 mm module width
- High-performance varistor technology
- Including thermic and dynamic cut-off unit and visual function display
- With visual and acoustic signalling
- ...-AS version with additional acoustic defect signalling (switchable)

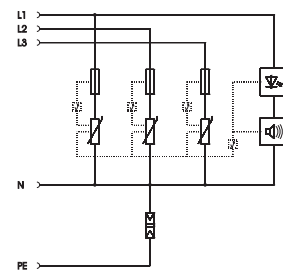
Application: Industry, residential buildings as well as for device protection in rotational current systems.



Dimensions



Connection options



V10 COMPACT-AS

Nominal voltage	U_N	230 V
SPD to EN 61643-11		Type 2+3
SPD to IEC 61643-11		Class II+III
Lightning protection zone LPZ		1→3
Nominal discharge current (8/20)	I_n	10 kA
Arrestor surge current (8/20) [total]	$I_{Total\ 8/20}$	60 kA
Maximum discharge current (8/20 μ s)	I_{max}	20 kA
Voltage protection level	U_p	< 1,1 kV
Response time	t_A	< 25 ns
Maximum back-up fuse		63 A
Temperature range	ϑ	-40 - +80 °C
Division unit TE (17.5 mm)		2.5
Protection rating		IP20
Connection cross-section rigid		2.5 - 10 mm ²
Connection cross-section, multi-wire		2.5 - 10 mm ²
Connection cross-section, flexible		2.5 - 10 mm ²



Surge arrester Compact with remote signalling



Highest continuous voltage

Type	V	Version	Pack. pcs	Weight kg/100 pcs.	Item No.
V10 COMPACT-FS	255	3 + NPE	1	17,300	5093382

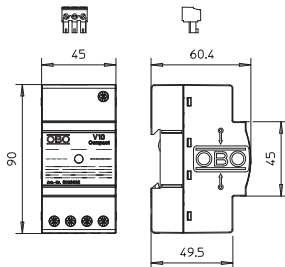
/pc.

Surge protection device, compact module type 2+3

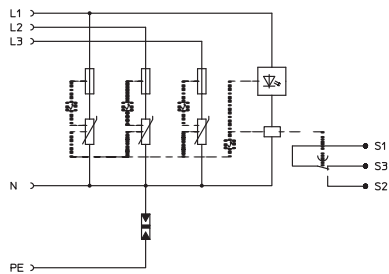
- For surge protection equipotential bonding to VDE 0100-443 (IEC 60364-4-44)
- Arresting capacity up to 60 kA (8/20) in total
- Integrated 3+1 solution for TN and TT network systems on 45 mm module width
- High-performance varistor technology
- Including thermic and dynamic cut-off mechanism and visual function display
- ...-FS (remote signalling) version with potential-free changeover contact for remote signalling

Application: Industry, residential buildings as well as for device protection in alternating current systems.

Dimensions



Connection options



V10 COMPACT-FS

Nominal voltage	U_N	230 V
SPD to EN 61643-11		Type 2+3
SPD to IEC 61643-11		Class II+III
Lightning protection zone LPZ		1-3
Nominal discharge current (8/20)	I_n	10 kA
Arrestor surge current (8/20) [total]	$I_{Total 8/20}$	60 kA
Maximum discharge current (8/20 μ s)	I_{max}	20 kA
Voltage protection level	U_d	< 1,1 kV
Response time	t_A	< 25 ns
Maximum back-up fuse		63 A
Temperature range	ϑ	-40 - +80 °C
Division unit TE (17.5 mm)		2.5
Protection rating		IP20
Connection cross-section rigid		2.5 - 10 mm ²
Connection cross-section, multi-wire		2.5 - 10 mm ²
Connection cross-section, flexible		2.5 - 10 mm ²

Connecting bridge for V10 Compact 200 mm



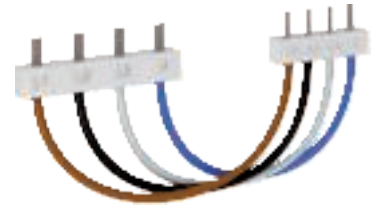
Type	Version	Pack. pcs	Weight kg/100 pcs.	Item No.
VB-V10 COMPACT-2	200 mm	1	5,300	5089650

/pc.

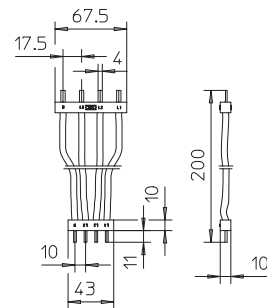
Connecting bridge for V10 Compact:

The VB-V10 Compact connecting bridge allows quick and easy bridging to other series-mounted devices such as residual-current circuit-breaker.

- Available in two different lengths.



Dimensions



Connection options

Connecting bridge for V10 Compact 400 mm



Type	Version	Pack. pcs	Weight kg/100 pcs.	Item No.
VB-V10 COMPACT-4	400 mm	1	8,900	5089652

/pc.

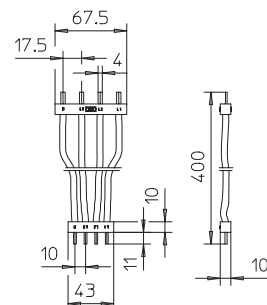
Connecting bridge for V10 Compact:

The VB-V10 Compact connecting bridge allows quick and easy bridging to other series-mounted devices such as residual-current circuit-breaker.

- Available in two different lengths.



Dimensions



Connection options

Surge arrester, 3-pole + NPE



	280	3 + NPE	1	37,800	5094920
--	-----	---------	---	--------	---------

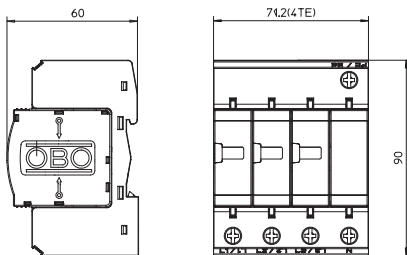
Highest continuous voltage

Pack. Weight pcs kg/100 pcs. Item No.

V 10-C/...: lightning and surge protection device type 2+3 (Class C+D) to VDE 0675 part 6-11 (DIN EN 61643-11) to overvoltage protection to DIN VDE 0100 part 443.

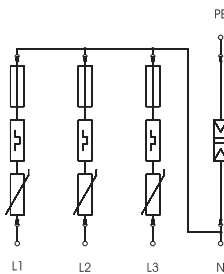
- With new MultiBase base part and Multi-connection clamps
- Complete unit consisting of upper part and base, pre-mounted and ready for connection
- Suitable for any TN and TT network systems
- Plug-in arrester with dynamic separating device
- With visual function display
- Version FS with remote signalling, potential-free changeover contact, for function monitoring
- High current conductivity and long service life
- Marked connections

Dimensions



Application example: residential buildings, single-family homes

Connection options



V10-C 3+NPE

Nominal voltage	U_N	230 V
SPD to EN 61643-11		Type 2+3
SPD to IEC 61643-11		Class II+III
Lightning protection zone LPZ		1-3
Nominal discharge current (8/20)	I_n	10 kA
Arrestor surge current (8/20) [total]	$I_{Total 8/20}$	40 kA
Maximum discharge current (8/20 μ s)	I_{max}	20 kA
Voltage protection level	U_d	< 1,1 kV
Response time	t_A	<25 ns
Maximum back-up fuse		125 A
Temperature range	ϑ	-40 - +80 °C
Division unit TE (17.5 mm)		4
Protection rating		IP20
Connection cross-section rigid		2.5 - 35 mm ²
Connection cross-section, multi-wire		2.5 - 35 mm ²
Connection cross-section, flexible		2.5 - 25 mm ²

Surge arrester, 3-pole + NPE with remote signalling



Type	Highest continuous voltage V	Version	Pack. pcs	Weight kg/100 pcs.	Item No.
V10-C 3+NPE+FS	280	3 + NPE	1	37,900	5094931

/pc.

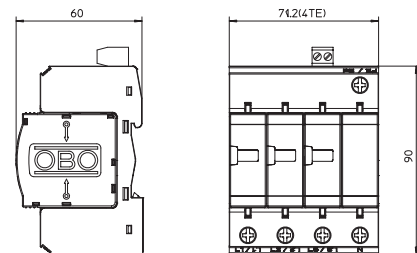
V 10-C/...: lightning and surge protection device type 2+3 (Class C+D) to VDE 0675 part 6-11 (DIN EN 61643-11) to overvoltage protection to DIN VDE 0100 part 443.

- With new MultiBase base part and Multi-connection clamps
- Complete unit consisting of upper part and base, pre-mounted and ready for connection
- Suitable for any TN and TT network systems
- Plug-in arrester with dynamic separating device
- With visual function display
- Version FS with remote signalling, potential-free changeover contact, for function monitoring
- High current conductivity and long service life
- Marked connections

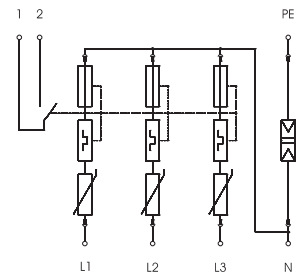
Application example: residential buildings, single-family homes



Dimensions



Connection options



V10-C 3+NPE+FS

Nominal voltage	U_N	230 V
SPD to EN 61643-11		Type 2+3
SPD to IEC 61643-11		Class II+III
Lightning protection zone LPZ		1→3
Nominal discharge current (8/20)	I_n	10 kA
Arrestor surge current (8/20) [total]	$I_{Total\ 8/20}$	40 kA
Maximum discharge current (8/20 μ s)	I_{max}	20 kA
Voltage protection level	U_p	< 1,1 kV
Response time	t_A	<25 ns
Maximum back-up fuse		125 A
Temperature range	ϑ	-40 - +80 °C
Division unit TE (17.5 mm)		4
Protection rating		IP20
Connection cross-section rigid		2.5 - 35 mm ²
Connection cross-section, multi-wire		2.5 - 35 mm ²
Connection cross-section, flexible		2.5 - 25 mm ²

Surge arrester, 1-pole + NPE



Type	Highest continuous voltage V	Version	Pack. pcs	Weight kg/100 pcs.	Item No.
V10-C 1+NPE-280	280	1 + NPE	1	22,200	5093418

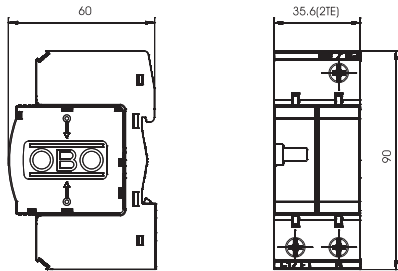
/pc.

V 10-C/...: lightning and surge protection device type 2+3 (Class C+D) to VDE 0675 part 6-11 (DIN EN 61643-11) to overvoltage protection to DIN VDE 0100 part 443.

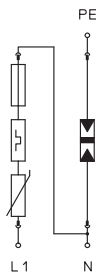
- With new MultiBase base part and Multi-connection clamps
- Complete unit consisting of upper part and base, pre-mounted and ready for connection
- Suitable for any TN and TT network systems
- Plug-in arrester with dynamic separating device
- With visual function display
- Version FS with remote signalling, potential-free changeover contact, for function monitoring
- High current conductivity and long service life
- Marked connections

Application example: residential buildings, single-family homes

Dimensions



Connection options



V10-C 1+NPE-280

Nominal voltage	U_N	230 V
SPD to EN 61643-11		Type 2+3
SPD to IEC 61643-11		Class II+III
Lightning protection zone LPZ		1-3
Nominal discharge current (8/20)	I_n	10 kA
Arrestor surge current (8/20) [total]	$I_{Total 8/20}$	40 kA
Maximum discharge current (8/20 μ s)	I_{max}	20 kA
Voltage protection level	U_p	< 1,1 kV
Response time	t_A	< 25 ns
Maximum back-up fuse		125 A
Temperature range	ϑ	-40 - +80 °C
Division unit TE (17.5 mm)		2
Protection rating		IP20
Connection cross-section rigid		2.5 - 35 mm ²
Connection cross-section, multi-wire		2.5 - 35 mm ²
Connection cross-section, flexible		2.5 - 35 mm ²

Surge arrester, 3-pole + NPE



Type	Highest continuous voltage V	Version	Pack. pcs	Weight kg/100 pcs.	Item No.
V10-C 3+NPE-320	320	3 + NPE	1	39,000	5094924

/pc.

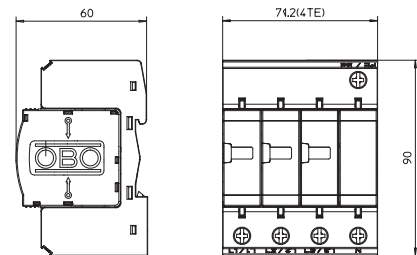
V 10-C/...: lightning and surge protection device type 2+3 (Class C+D) to VDE 0675 part 6-11 (DIN EN 61643-11) to overvoltage protection to DIN VDE 0100 part 443.

- With new MultiBase base part and Multi-connection clamps
- Complete unit consisting of upper part and base, pre-mounted and ready for connection
- Suitable for any TN and TT network systems
- Plug-in arrester with dynamic separating device
- With visual function display
- Version FS with remote signalling, potential-free changeover contact, for function monitoring
- High current conductivity and long service life
- Marked connections

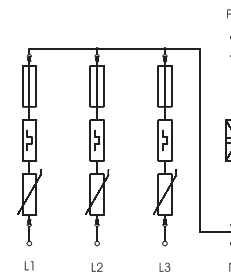
Application example: residential buildings, single-family homes



Dimensions



Connection options



V10-C 3+NPE-320

Nominal voltage	U_N	320 V
SPD to EN 61643-11		Type 2+3
SPD to IEC 61643-11		Class II+III
Lightning protection zone LPZ		1→3
Nominal discharge current (8/20)	I_n	10 kA
Arrestor surge current (8/20) [total]	$I_{Total\ 8/20}$	40 kA
Maximum discharge current (8/20 μ s)	I_{max}	20 kA
Voltage protection level	U_p	< 1,2 kV
Response time	t_A	<25 ns
Maximum back-up fuse		125 A
Temperature range	ϑ	-40 - +80 °C
Division unit TE (17.5 mm)		4
Protection rating		IP20
Connection cross-section rigid		2.5 - 35 mm ²
Connection cross-section, multi-wire		2.5 - 35 mm ²
Connection cross-section, flexible		2.5 - 25 mm ²



Upper part, surge arrester 150 V



Highest continuous voltage

Type	V	Version	Pack. pcs	Weight kg/100 pcs.	Item No.
V10-C 0-150	150	1-pole	1	2,900	5093400

/pc.

V 10-C/...: lightning and surge protection device type 2+3 (Class C+D) to VDE 0675 part 6-11 (DIN EN 61643-11) for overvoltage protection to DIN VDE 0100 part 443.

- Plug-in upper part; upper part can be separated from lower part without tools
- Including thermal and dynamic separating device
- High current conductivity and long service life
- 3+NPE is suitable for any TN and TT network system

Application example: Industrial and residential buildings in every normal commercially available distributor housing.

Other variants with FS (with remote signalling), AS (with audible signalling), FS-SÜ and housing are described on the following pages.

Upper part, surge arrester 280 V



Highest continuous voltage

Type	V	Version	Pack. pcs	Weight kg/100 pcs.	Item No.
V10-C 0-280	280	1-pole	1	3,360	5093402

/pc.

V 10-C/...: lightning and surge protection device type 2+3 (Class C+D) to VDE 0675 part 6-11 (DIN EN 61643-11) for overvoltage protection to DIN VDE 0100 part 443.

- Plug-in upper part; upper part can be separated from lower part without tools
- Including thermal and dynamic separating device
- High current conductivity and long service life
- 3+NPE is suitable for any TN and TT network system

Application example: Industrial and residential buildings in every normal commercially available distributor housing.

Other variants with FS (with remote signalling), AS (with audible signalling), FS-SÜ and housing are described on the following pages.

Upper part, surge arrester 320 V



Highest continuous voltage

Type	V	Version	Pack. pcs	Weight kg/100 pcs.	Item No.
V10-C 0-320	320	1-pole	1	3,510	5093404

/pc.

V 10-C/...: lightning and surge protection device type 2+3 (Class C+D) to VDE 0675 part 6-11 (DIN EN 61643-11) for overvoltage protection to DIN VDE 0100 part 443.

- Plug-in upper part; upper part can be separated from lower part without tools
- Including thermal and dynamic separating device
- High current conductivity and long service life
- 3+NPE is suitable for any TN and TT network system

Application example: Industrial and residential buildings in every normal commercially available distributor housing.

Other variants with FS (with remote signalling), AS (with audible signalling), FS-SÜ and housing are described on the following pages.



Upper part, surge arrestor 385 V



Type	Highest continuous voltage		Pack. pcs	Weight kg/100 pcs.	Item No.
	V	Version			
V10-C 0-385	385	1-pole	30	3,630	5093406



/pc.

V 10-C/...: lightning and surge protection device type 2+3 (Class C+D) to VDE 0675 part 6-11 (DIN EN 61643-11) for overvoltage protection to DIN VDE 0100 part 443.

- Plug-in upper part; upper part can be separated from lower part without tools
- Including thermal and dynamic separating device
- High current conductivity and long service life
- 3+NPE is suitable for any TN and TT network system

Application example: Industrial and residential buildings in every normal commercially available distributor housing.

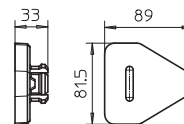
Other variants with FS (with remote signalling), AS (with audible signalling), FS-SÜ and housing are described on the following pages.

Shock Guard locking

Type	Colour Version		Pack. pcs	Weight kg/100 pcs.	Item No.
MB-SG	Blue	Locking system for upper parts	100	0,060	5096695

PA Polyamide

/pc.



Shock Guard: Locking for connector technology on MultiBase bases

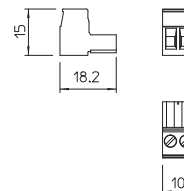
- Locking system for the plug-in modules/upper parts
- Vibration and shock-tested
- Use in housing hole of the connection terminals
- Upper parts can be removed without tools

Remote signalling replacement connector for MultiBase



Type	Version		Pack. pcs	Weight kg/100 pcs.	Item No.
MB-FS	2-pole		25	0,310	5096693

/pc.

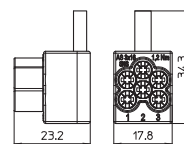


Replacement telephony connector, 2-pole version, for MultiBase base

Connection terminal for through-wiring

Type	Colour Version		Pack. pcs	Weight kg/100 pcs.	Item No.
AS 3x16	Light grey	3x16mm ²	5	2,474	5012010

/100 pc.



Connection terminal type: AS 3 x 16

Connection cross-section: 3 x 1.5 - 16 sq mm rigid/ multiple strands

3 x 1.5 - 10 sq mm fine-wire/with wire end sleeve

Stripping length: 16 mm

Rec. tightening torque: 1.2 Nm

Nominal current: 50 A

Width: 17.5 mm (1 TE)

For EMV-optimised V through-wiring to IEC 60364-5-53 (VDE 0100-534).



Surge protection energy technology, arrester, type 2+3: The plus for LED street lighting

- + Surge arrestors with high arresting capacity
- + High arresting capacity of 10 kA (max. 20 kA)
- + Visual status display
- + Labelled connections
- + Optional switch-off of the LED luminaires after surge protection fails



Surge protection
for LED systems

Function and areas of use

The surge arrester ÜSM-LED 230 meets the type 2 requirement class according to IEC 61643-11. This device protects lighting systems against any kind of surge

voltages. The voltage-limiting, high-performance zinc oxide varistor provides several benefits. An extremely short response time, a low protection level and high current leakage capability with long ser-

vice life. It can be used in the mast connection box or in LED luminaires.

Surge protection for LED systems



Type	Highest continuous voltage V	Version	Pack. pcs	Weight kg/100 pcs.	Item No.
ÜSM-LED 230	255	1 + NPE	1	3,500	5092480
ÜSM-LED 440	440	1 + NPE	1	4,500	5092482

/pc.

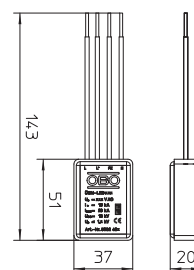
Surge protection module type 2+3 to DIN EN 61643-11 for 230/400 V power grids. Appropriate for the protection of LED lighting.

- With visual function display
- Small size for the installation in the pole or in the LED lamp head
- 1+NPE protective circuit with a maximum discharge capacity of 20 kA
- Surge limitation under 1,300 V or 1,000 V @ 5 kA
- Available with or without cut-off function of the lamp in case of malfunction

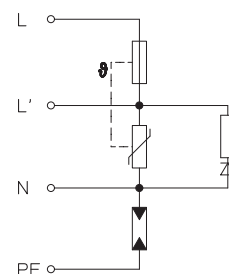
Application: Universally deployable in all lighting systems



Dimensions



Connection options



ÜSM-LED 230

Nominal voltage	U_N	230 V
SPD to EN 61643-11		Type 2+3
SPD to IEC 61643-11		Class II+III
Lightning protection zone LPZ		1→3
Nominal discharge current (8/20)	I_n	10 kA
Arrestor surge current (8/20) [total]	$I_{Total\ 8/20}$	20 kA
Maximum discharge current (8/20 μ s)	I_{max}	20 kA
Voltage protection level	U_d	1,3 kV
Response time	t_A	< 25 ns
Maximum back-up fuse		16 A
Temperature range	ϑ	-15 - +60 °C
Division unit TE (17.5 mm)		Other
Protection rating		IP20
Connecting cable length		0.092 m

ÜSM-LED 440

Nominal voltage	U_N	440 V
SPD to EN 61643-11		Type 2+3
SPD to IEC 61643-11		Class II+III
Lightning protection zone LPZ		1→3
Nominal discharge current (8/20)	I_n	10 kA
Arrestor surge current (8/20) [total]	$I_{Total\ 8/20}$	20 kA
Maximum discharge current (8/20 μ s)	I_{max}	20 kA
Voltage protection level	U_d	1,8 kV
Response time	t_A	< 25 ns
Maximum back-up fuse		20 A
Temperature range	ϑ	-15 - +60 °C
Division unit TE (17.5 mm)		—
Protection rating		IP20
Connecting cable length		0.092 m



Surge protection for LED systems



LPZ 1→3 Type 2+3



Type	Highest continuous voltage		Pack. pcs	Weight kg/100 pcs.	Item No.
	V	Version			
ÜSM-LED 230-65	255	1 + NPE	25	7,500	5092478

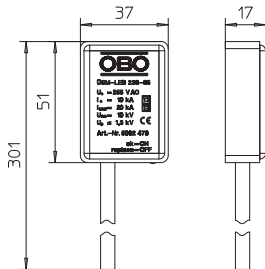
/pc.

Surge protection module type 2+3 to DIN EN 61643-11 for 230/400 V power grids. Appropriate for the protection of LED lighting and the LED driver.

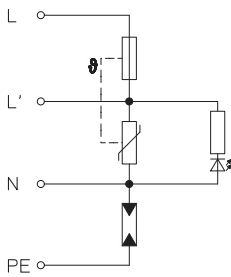
- With visual function display
- Small size for the installation in the mast connection box
- IP65 and with 25 cm connection cable
- 1+NPE protective circuit with a maximum discharge capacity of 20 kA
- Surge limitation under 1,300 V or 1,000 V @ 5 kA
- Available with or without cut-off function of the lamp in case of malfunction

Application: Universally deployable in all lighting systems

Dimensions



Connection options



ÜSM-LED 230-65

Nominal voltage	U_N	230 V
SPD to EN 61643-11		Type 2+3
SPD to IEC 61643-11		Class II+III
Lightning protection zone LPZ		2→3
Nominal discharge current (8/20)	I_n	10 kA
Arrestor surge current (8/20) [total]	$I_{Total 8/20}$	20 kA
Maximum discharge current (8/20 μ s)	I_{max}	20 kA
Voltage protection level	U_d	1,3 kV
Response time	t_A	< 25 ns
Maximum back-up fuse		16 A
Temperature range	ϑ	-15 - +60 °C
Division unit TE (17.5 mm)		Other
Protection rating		IP65
Connecting cable length		0.25 m